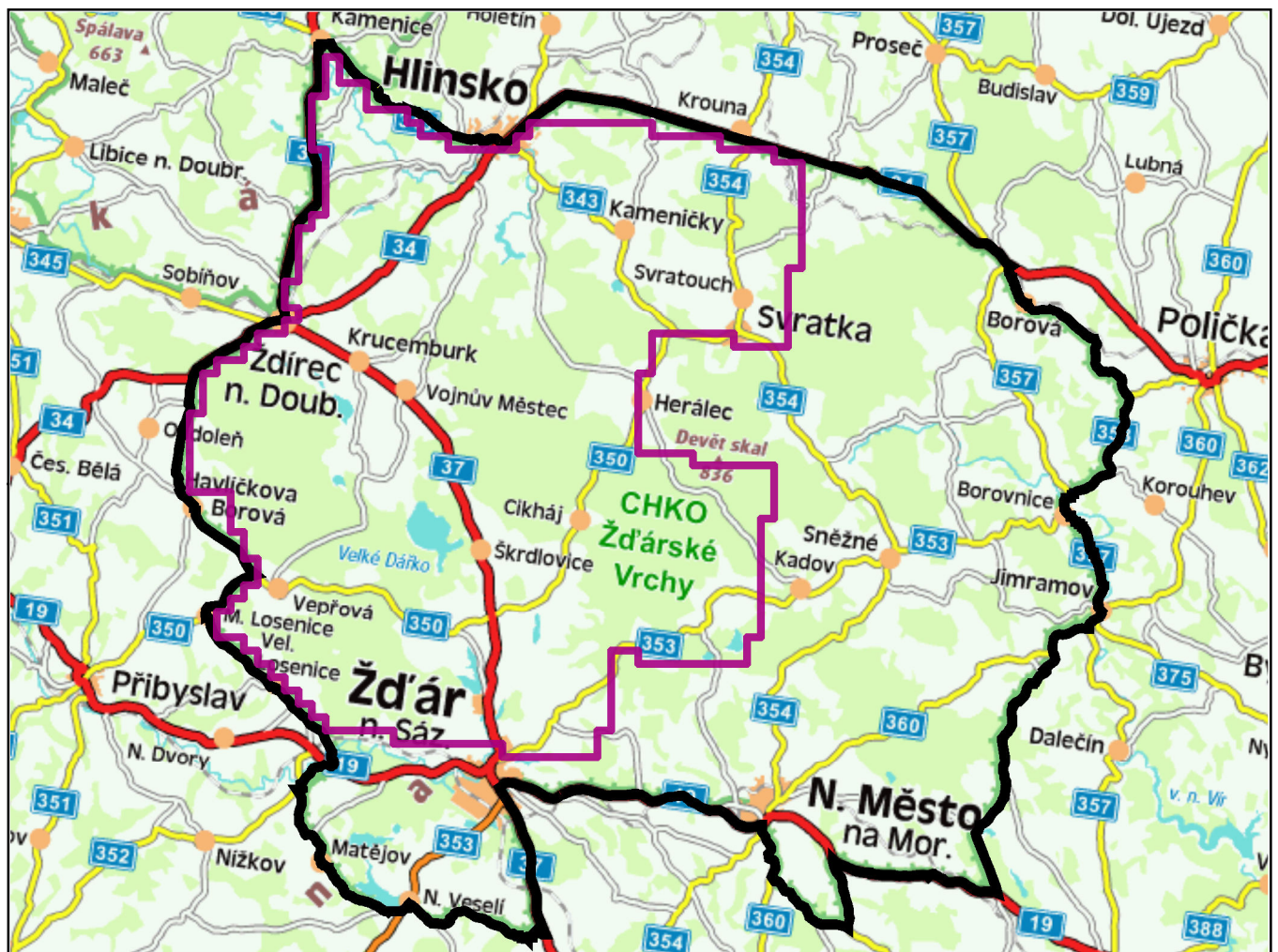


INFLUENCE OF NEAR-NATURE HABITATS ON LANDSCAPE EQUITABILITY

PETRA ŠÍMOVÁ



ANNOTATION:

The map collection falls under results of multiyear research focused on influence of input geodata on results of analyses of landscape fragmentation. Individual maps represent landscape suitability of the Žďárské vrchy Protected Landscape Area, described by Shannon suitability index (SHEI) in two levels of thematic resolution. At the first level, only main classes of land cover (defined in the ZABAGED dataset) were included. Rare habitats obtained from layers of Natura 2000 habitat mapping were added to ZABAGED classes at the second level. The index values were computed using Python script for ArcGIS 9.3.

Input data: ZABAGED (CUZK), Natura 2000
Data processing and design of maps: (C) Šímová, P.

AUTHOR:

Petra Šímová

Faculty of Environmental Sciences

Department of Applied Geoinformatics and Spatial Planning

Kamýcká 129, 165 00 Praha 6 - Suchbátka

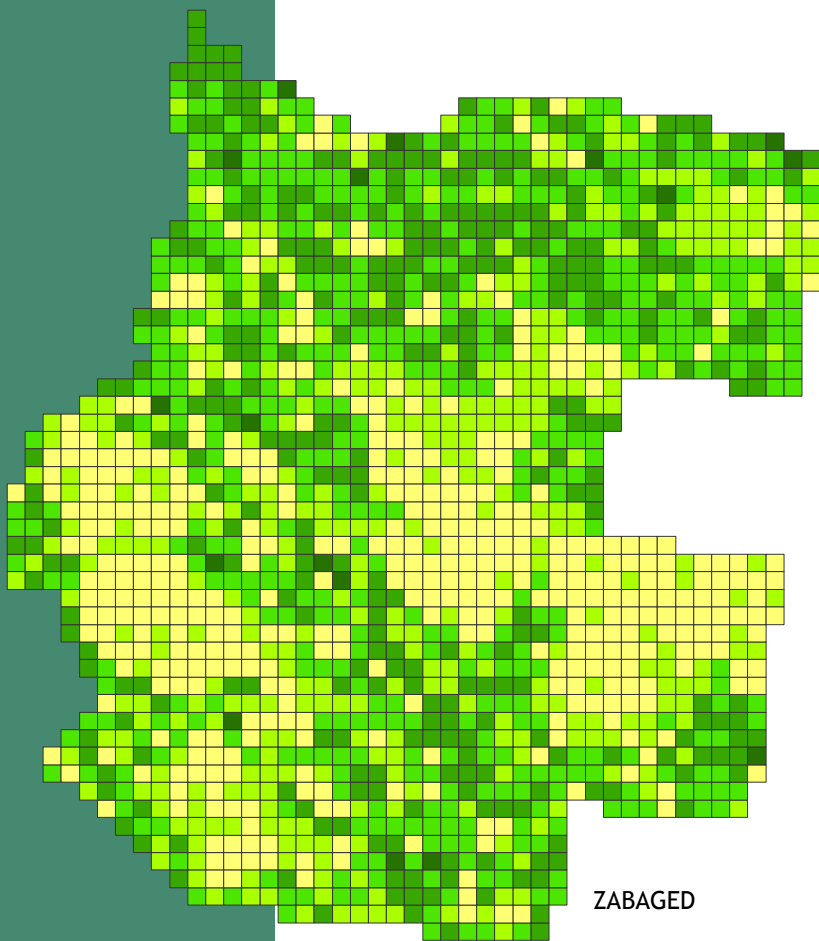
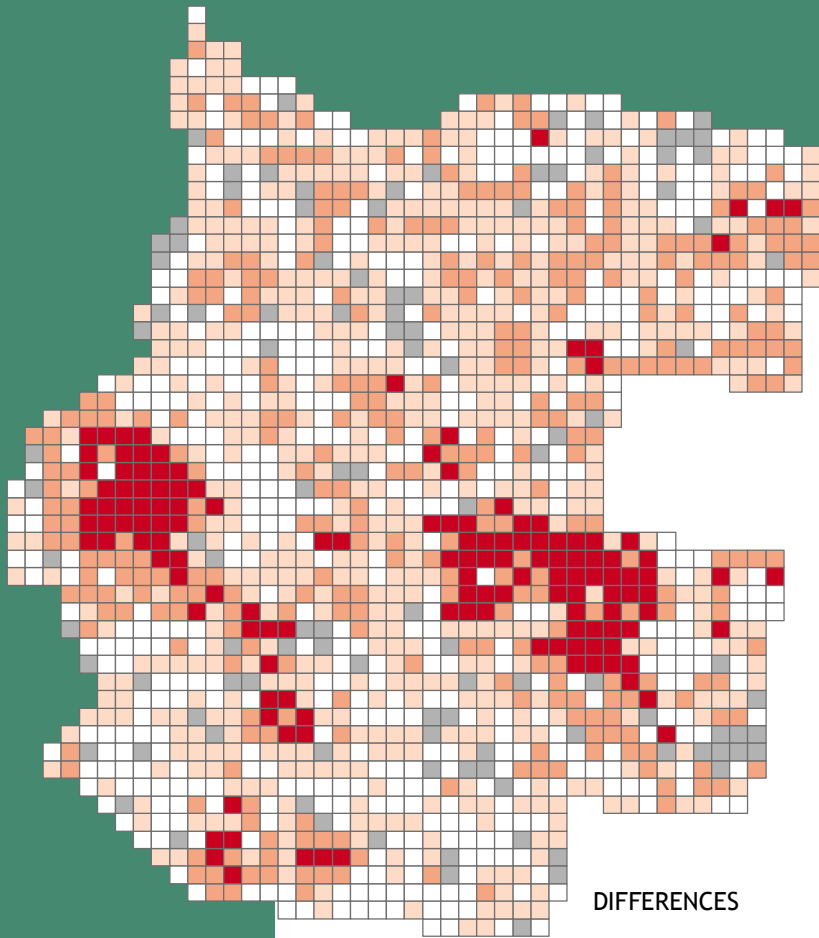
simova@fzp.czu.cz

2011

Acknowledgements

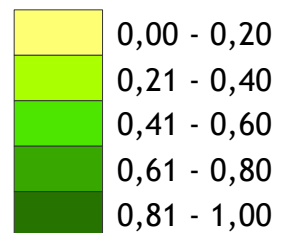
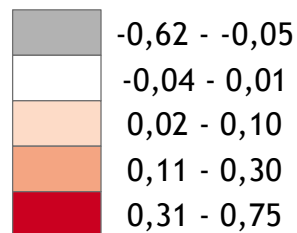
The study was funded by the Faculty of Environmental Sciences, Czech University of Life Sciences Prague (Grant No. 42900/1312/3166).


INFLUENCE OF NEAR-NATURE HABITATS ON LANDSCAPE EQUITABILITY DESCRIBED BY SHANNON EVENNESS INDEX (SHEI)



Differences between values of SHEI (Natura - Zabaged)

Values of SHEI



 Study area

<i>SHEI</i>	ZAB	NAT	DIFF.
MIN	0,00	0,00	-0,62
MAX	0,99	0,99	0,71
MEAN	0,40	0,48	0,08
ST.DEV.	0,21	0,20	0,14

