

2011

Fine-scale farmland fragmentation

in the Žďárské vrchy Protected Landscape Area



Petra Šimová
*Faculty of Environmental Sciences
Czech University of Life Sciences, Prague*

Annotation

The map collection falls under results of research focused on landscape structure of Protected Landscape Area Ždárské vrchy. Individual maps represent fragmentation of farmland, described by following landscape metrics: number of patches (NP), mean patch size (MPS) and total edge (TE). The index values were computed using Patch Analyst for ArcGIS 9.3. The layer of farmland, elaborated on the basis of ZABAGED dataset, served as input for the calculation

Author

Petra Šímová

Faculty of Environmental Sciences

Department of Applied Geoinformatics and Spatial Planning

Kamýcká 129, 165 00 Praha 6 – Suchbátka

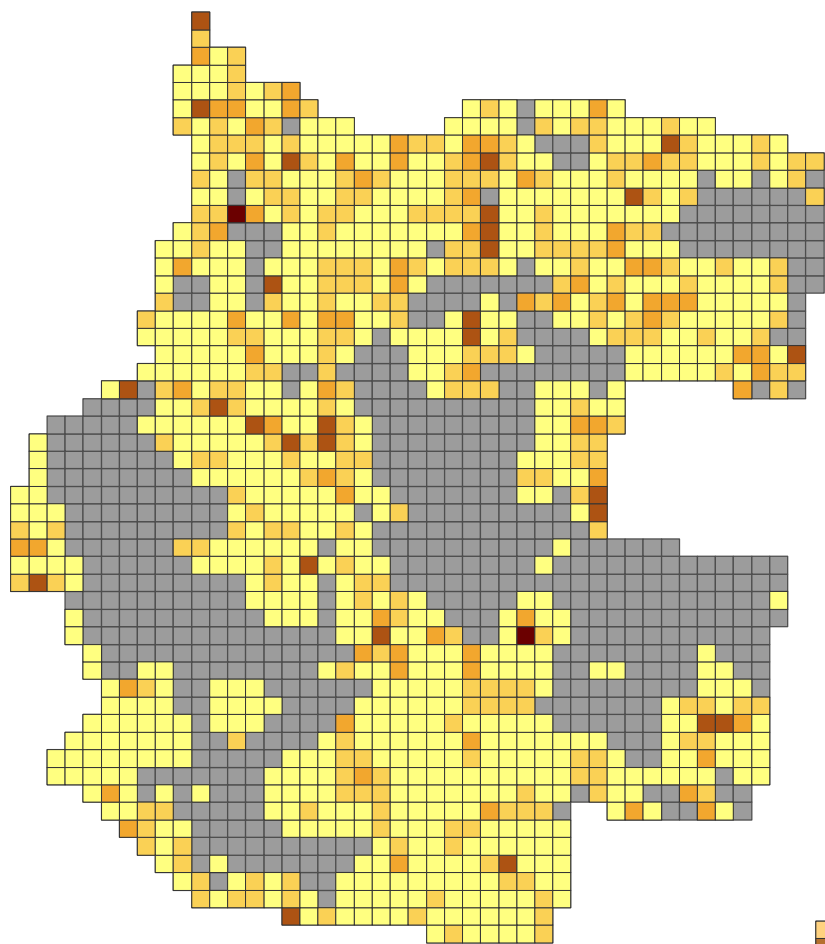
simova@fzp.czu.cz

Acknowledgements

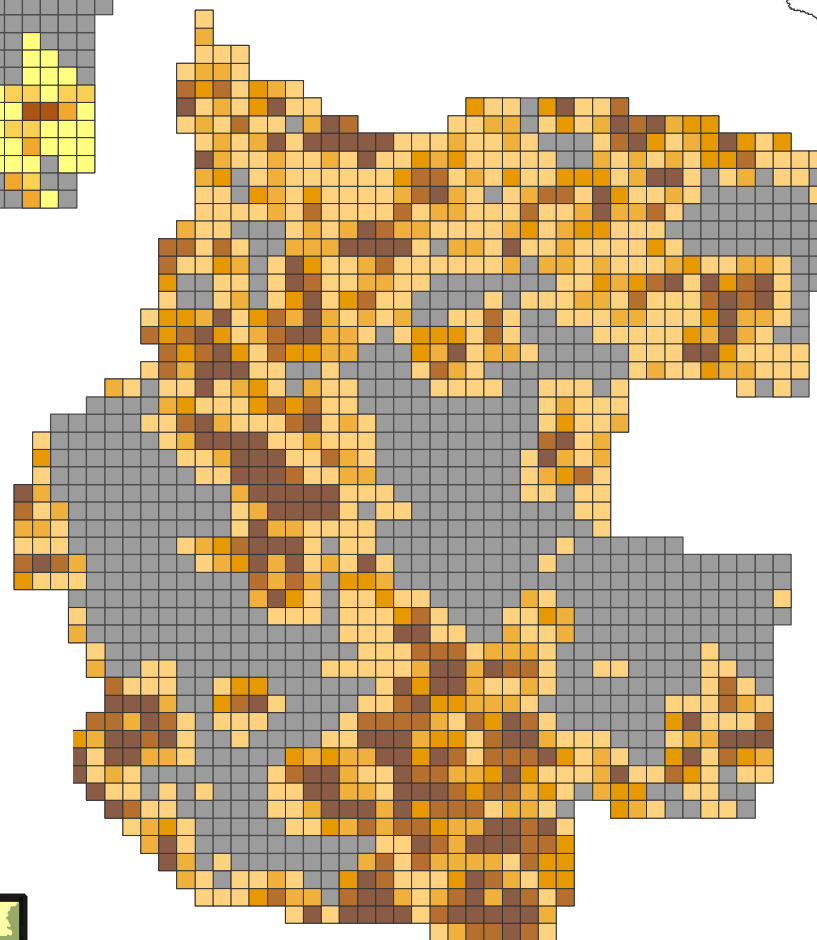
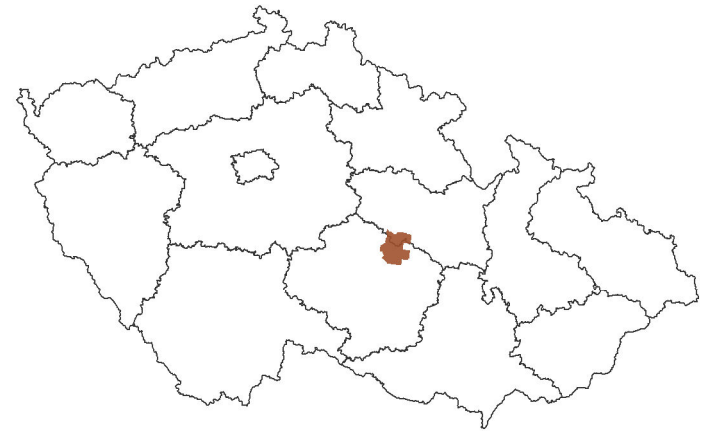
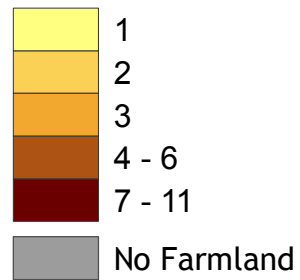
The study was funded by the Faculty of Environmental Sciences, Czech University of Life Sciences Prague (Grant No. 42900/1312/3166).

FINE-SCALE FARMLAND FRAGMENTATION

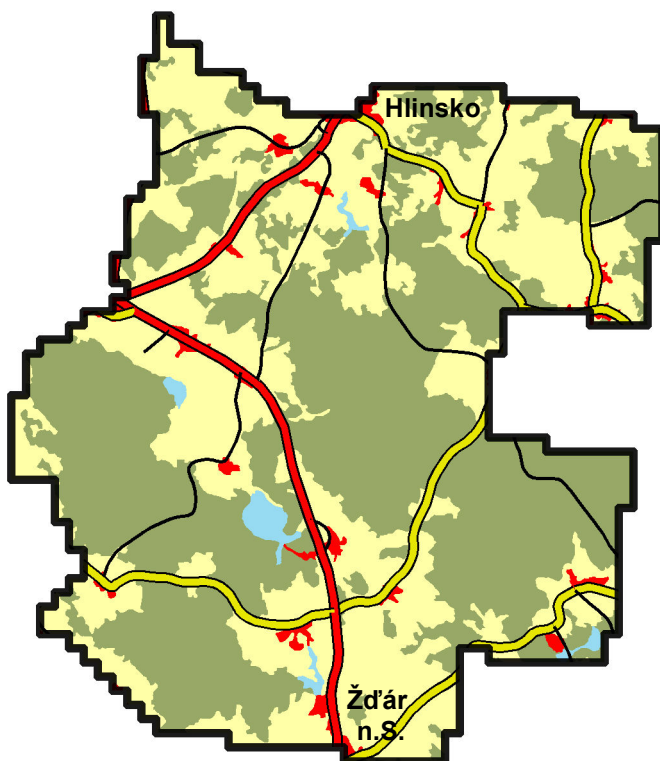
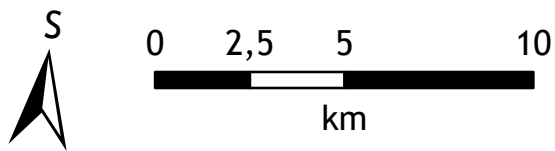
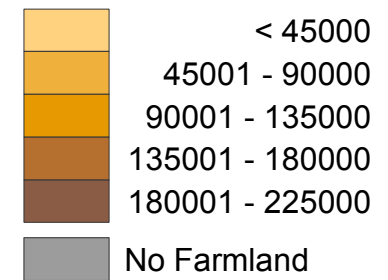
IN THE ŽĎÁRSKÉ VRCHY PROTECTED LANDSCAPE AREA



NUMBER OF PATCHES



MEAN PATCH SIZE (SQ. METERS)



TOTAL EDGE (METERS)

