

***Amandinea punctata* in the Joshua Tree National Park (California, U.S.A.)**

Map collection



Amandinea punctata. Photo by Tim Wheeler

Kerry Knudsen, Kocourková Jana*

*Czech University of Life Sciences Prague, Faculty of Environmental Sciences, Department of Ecology, Czech Republic

© 2012

Abstract – *Amandinea punctata* is a cosmopolitan species. It is one of the most common and toxitolerant epiphytic crustose lichens in California found on bark, wood and rocks. In Joshua Tree is only known as epiphyte preferring juniper trees, known from western mountain part of area due to generally higher rainfall. The species may be heterogeneous. The map of distribution of *A. punctata* in Joshua Tree is presented. We compiled a detailed list of records based on GPS data.

Key words – *Amandinea punctata*, epiphytic lichen, distribution, map, Joshua Tree, Mojave Desert

Authors – Kerry Knudsen¹, Kocourková Jana²

¹The Herbarium, Department of Botany & Plant Sciences, University of California Riverside, California 92521, U.S.A. – e-mail: Knudsen@ucr.edu

²University of Life Sciences Prague, Department of Ecology, Faculty of Environmental Sciences, Kamýcká 129, Praha 6 – Suchdol, CZ – 165 21, Czech Republic – e-mail: kocourkovaj@fzp.czu.cz

***Amandinea punctata* (Hoffm.) Coppins & Scheid.**

DESCRIPTION. – Bungartz et al. 2007 (as *Buellia punctata*).

WORLD DISTRIBUTION. – Cosmopolitan (but probably heterogeneous).

SUBSTRATE. – Bark and wood, on fences, not on rock in our area but commonly on rocks in Europe; usually on junipers, infrequently on dry pinyon pine and oak bark in Joshua Tree.

NOTES. – *Amandinea punctata* is one of the most common epiphytic crustose lichens in California, its lecideine apothecia covering branches, its thallus brown or gray, sometimes absent. It is often in California the only species on bark in arid areas. It grows on acidic bark. It is tolerant of NO₂ and can tolerate SO₂. It's a pioneer species too, quickly re-entering disturbed areas, but we have not observed it on burnt wood. Current molecular data does not apparently support the genus *Amandinea* being separate from *Buellia* (Scheidegger 2009) but this is not broadly accepted in Europe or North America. Specimens from California may represent two taxa (Bungartz et al. 2007). *Amandinea punctata* occurs in the Mojave Desert in Joshua Tree on juniper trees, and also on the dried wood of dead branches and fallen trees including on pinyon pines, *Purshia tridentata* var. *granulosa*, and oak wood. It is often the only species found on junipers. It is documented by 14 collections.

DISTRIBUTION. – Juniper Flats, Keys View (on surviving un-burnt junipers), Little San Bernardino Mountains (Black Rock, Eureka Peak, near Long Canyon), Lost Horse Mountains (on basalt peak), Lost Horse Valley, lower and upper Covington Flats, Pine City, Ryan Mountain.

LITERATURE CITED

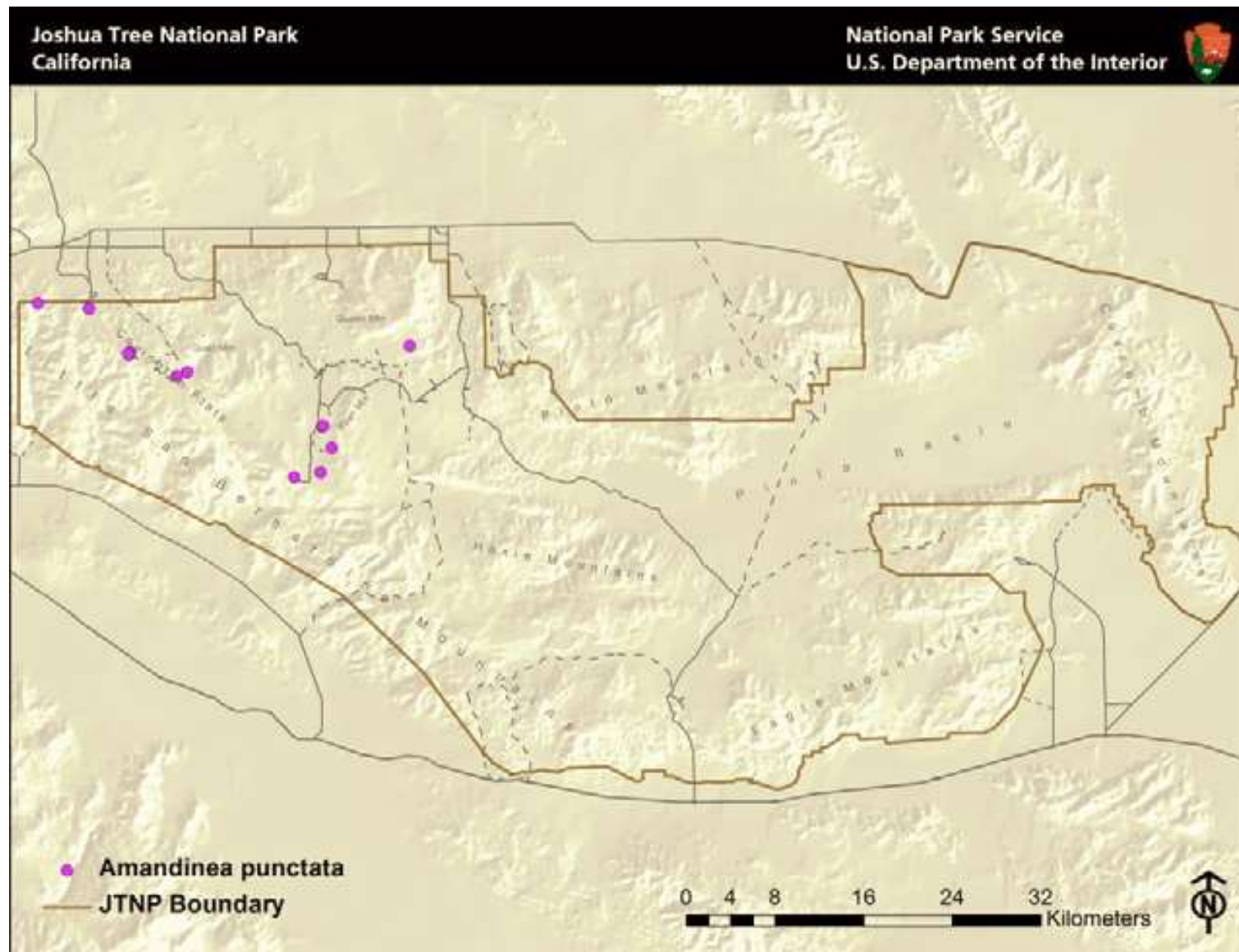
Bungartz, F., A. Nordin and U. Grube. 2007 [2008]. *Buellia*. In: T.H. Nash III, C. Gries and F. Bungartz (eds.). Lichen Flora of the Greater Sonoran Desert Region 3: 113–179. Lichens Unlimited, Tempe, AZ.

Scheidegger, C. 2009. *Amandinea* Choisy ex Scheid. & H. Mayrhofer (1993). In: C. W. Smith, A. Aptroot, B. J. Coppins, A. Fletcher, O. L. Gilbert, P. W. James and P. A. Wosley (eds.) The Lichens of Great Britain and Ireland. The British Lichen Society, Natural History Museum Publications, United Kingdom, pp. 142–144.

ACKNOWLEDGEMENTS

The work of Kerry Knudsen was funded by a co-operative agreement between Joshua Tree National Park and the University of California at Riverside (UCR). The work of Jana Kocourková was supported financially by the KONTAKT II, Program of International Cooperation in Research and development for scientific cooperation between the CR and USA, LH 11057 from Ministry of Education, Youth and Sports of the Czech Republic.

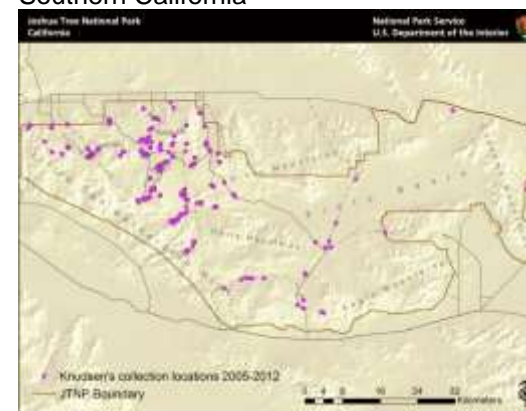
Amandinea punctata



Known distribution of *Amandinea punctata* in JTNP.



Location of Joshua Tree National Park in Southern California



All 238 of Knudsen's and Kocourková's lichen collection sites throughout Joshua Tree National Park between the years of 2005 and 2012.

Map collection, maps made in software ArcGIS, 10.1; electronic form, file type pdf.