

***Caloplaca nashii* in the Joshua Tree National Park (California, U.S.A.)**

Map collection



Caloplaca nashii. Photo by Tim Wheeler

Kerry Knudsen, Kocourková Jana*

*Czech University of Life Sciences Prague, Faculty of Environmental Sciences, Department of Ecology, Czech Republic

© 2012

Abstract – *Caloplaca nashii* occurs only in North America. The two calciphiles, *Caloplaca nashii* and *C. crenulatella*, often occur together in drainages or seasonal seeps on non-calcareous rock in California. *Caloplaca nashii* is more common than *C. crenulatella* in Joshua Tree, documented by 32 collections from the Sonoran and Mojave Deserts. It grows on basalt, monzogranite, and gneiss in Joshua Tree. The map of distribution of *C. nashii* in Joshua Tree is presented. We compiled a detailed list of records based on GPS data.

Key words – *Caloplaca nashii*, lichens, distribution, map, Joshua Tree, North America, *C. crenulatella*

Authors – Kerry Knudsen¹, Kocourková Jana²

¹The Herbarium, Department of Botany & Plant Sciences, University of California Riverside, California 92521, U.S.A. – e-mail: Knudsen@ucr.edu

²University of Life Sciences Prague, Department of Ecology, Faculty of Environmental Sciences, Kamýcká 129, Praha 6 – Suchbát, CZ – 165 21, Czech Republic – e-mail: kocourkovaj@fzp.czu.cz

***Caloplaca nashii* Nav.-Ros., Gaya & Hladun**

DESCRIPTION. – Wetmore 2007.

WORLD DISTRIBUTION. – North America.

SUBSTRATE. – Calcareous and non-calcareous rocks; on monzogranite, and gneiss in Joshua Tree.

NOTES. – The two calciphiles, *Caloplaca nashii* and *C. crenulatella*, often occur together in drainages or seasonal seeps on non-calcareous rock in California. Both species are endolithic, common, and even grow on concrete. *Caloplaca nashii* has larger ascospores than *C. crenulatella*. It is more common than *C. crenulatella* in Joshua Tree, documented by 32 collections from the Sonoran and Mojave Deserts. It was reported from the Granite Mountains (Knudsen and Werth 2008). The lichenicolous fungus *Lichenochora epinashii* Nav.-Ros. & Etayo was described from Mexico on *Caloplaca nashii* but has not yet been collected in California.

DISTRIBUTION. – Cottonwood Mountains, Hidden Valley, Juniper Flats, Little San Bernardino Mountains (above Dillon Road, Berdoo Canyon, Black Rock, Eureka Peak, Keys View, Pushwalla), Lost Horse Mountains, Malapai Hill (basalt and monzogranite), Queen Valley, Sheep's Pass, Skull Rock area, Squaw Tank, Wonderland of Rocks (Indian Cove, Keys Ranch).

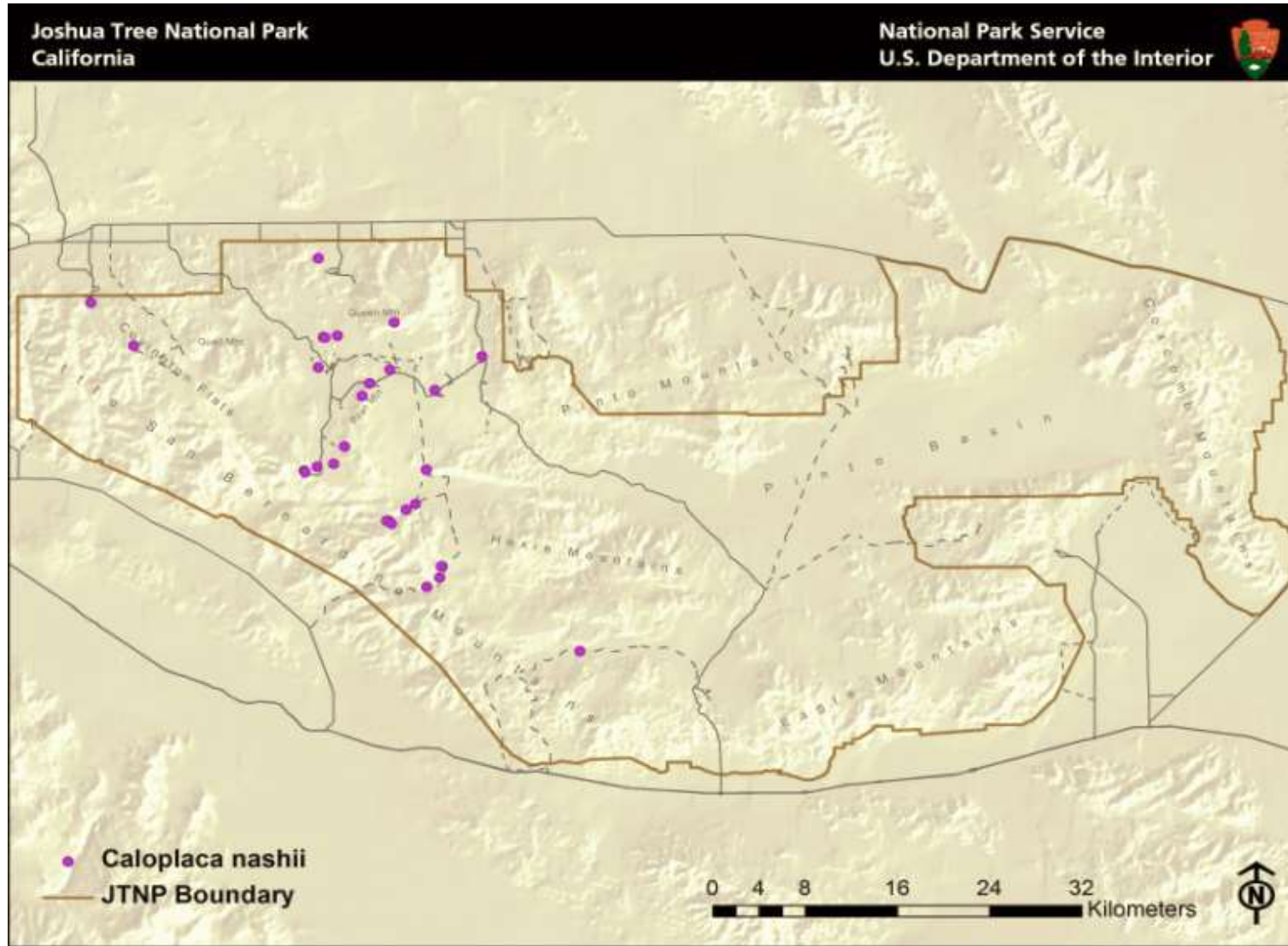
LITERATURE CITED

- Knudsen, K. and S. Werth. 2008. Lichens of the Granite Mountains, Sweeney Granite Mountain Desert Research Center, southwestern Mojave Desert, San Bernardino County, California. *Evansia* 25(1): 15–19.
- Wetmore, C. M. 2007[2008]. *Caloplaca*. In: T. H. Nash, III, C. Gries and F. Bungartz (eds.) Lichen Flora of the Greater Sonoran Desert Region 3: 179–220. Lichens Unlimited, Temp.

ACKNOWLEDGEMENTS

The work of Kerry Knudsen was funded by a co-operative agreement between Joshua Tree National Park and the University of California at Riverside (UCR). The work of Jana Kocourková was supported financially by the KONTAKT II, Program of International Cooperation in Research and development for scientific cooperation between the CR and USA, LH 11057 from Ministry of Education, Youth and Sports of the Czech Republic.

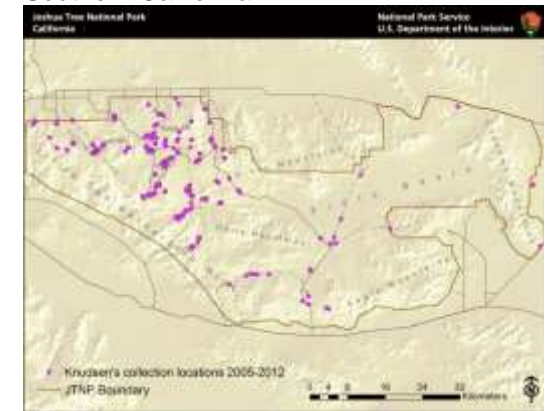
Caloplaca nashii



Known distribution of *Caloplaca nashii* in JTNP.



Location of Joshua Tree National Park in Southern California



All 238 of Knudsen's and Kocourková's lichen collection sites throughout Joshua Tree National Park between the years of 2005 and 2012.

Map collection, maps made in software ArcGIS, 10.1; electronic form, file type pdf.