

***Candelariella aurella* in the Joshua Tree National Park (California, U.S.A.)**

Map collection



Candelariella aurella. Photo by Tim Wheeler

Kerry Knudsen, Kocourková Jana*

*Czech University of Life Sciences Prague, Faculty of Environmental Sciences, Department of Ecology, Czech Republic

© 2012

Abstract – *Candelariella aurella* has cosmopolitan distribution. It occurs throughout California and is common on concrete. It is common species in Joshua Tree, documented from 22 collections on basalt, gneiss, and monzogranite mainly in drainages. The map of distribution of *C. aurella* in Joshua Tree National Park is presented. We compiled a detailed list of records based on GPS data.

Key words – *Candelariella aurella*, *C. crenulatella*, *C. nashii*, lichens, distribution, map, Mojave and Sonoran Deserts

Authors – Kerry Knudsen¹, Kocourková Jana²

¹The Herbarium, Department of Botany & Plant Sciences, University of California Riverside, California 92521, U.S.A. – e-mail: Knudsen@ucr.edu

²University of Life Sciences Prague, Department of Ecology, Faculty of Environmental Sciences, Kamýcká 129, Praha 6 – Suchbát, CZ – 165 21, Czech Republic – e-mail: kocourkovaj@fzp.czu.cz

***Candelariella aurella* (Hoffm.) Zahlbr.**

DESCRIPTION. – Westberg 2004.

WORLD DISTRIBUTION. – Cosmopolitan.

SUBSTRATE. – Calcareous rock, concrete, and non-calcareous rock especially in drainages, rarely on wood; on basalt, gneiss, and monzogranite in Joshua Tree.

NOTES. – *Candelariella aurella* occurs throughout California and is common on concrete. It often occurs with *Caloplaca nashii* or *C. crenulatella* in drainages and seeps. It is common in the Mojave and Sonoran Deserts in Joshua Tree and is documented by 22 collections.

DISTRIBUTION. – Cottonwood Mountains, Hexie Mountains, Juniper Flats, Little San Bernardino Mountains (above Dillon Road, Eureka Peak, Pushwalla), Lost Horse Mountains, Malapai Hill (on basalt), Pinto Mountains (below Belle Mountain), Skull Rock, Smith Water Canyon, Queen Mountain, Queen Valley, upper Covington Flats, Wonderland of Rocks (Keys Ranch, Wall Street Mill).

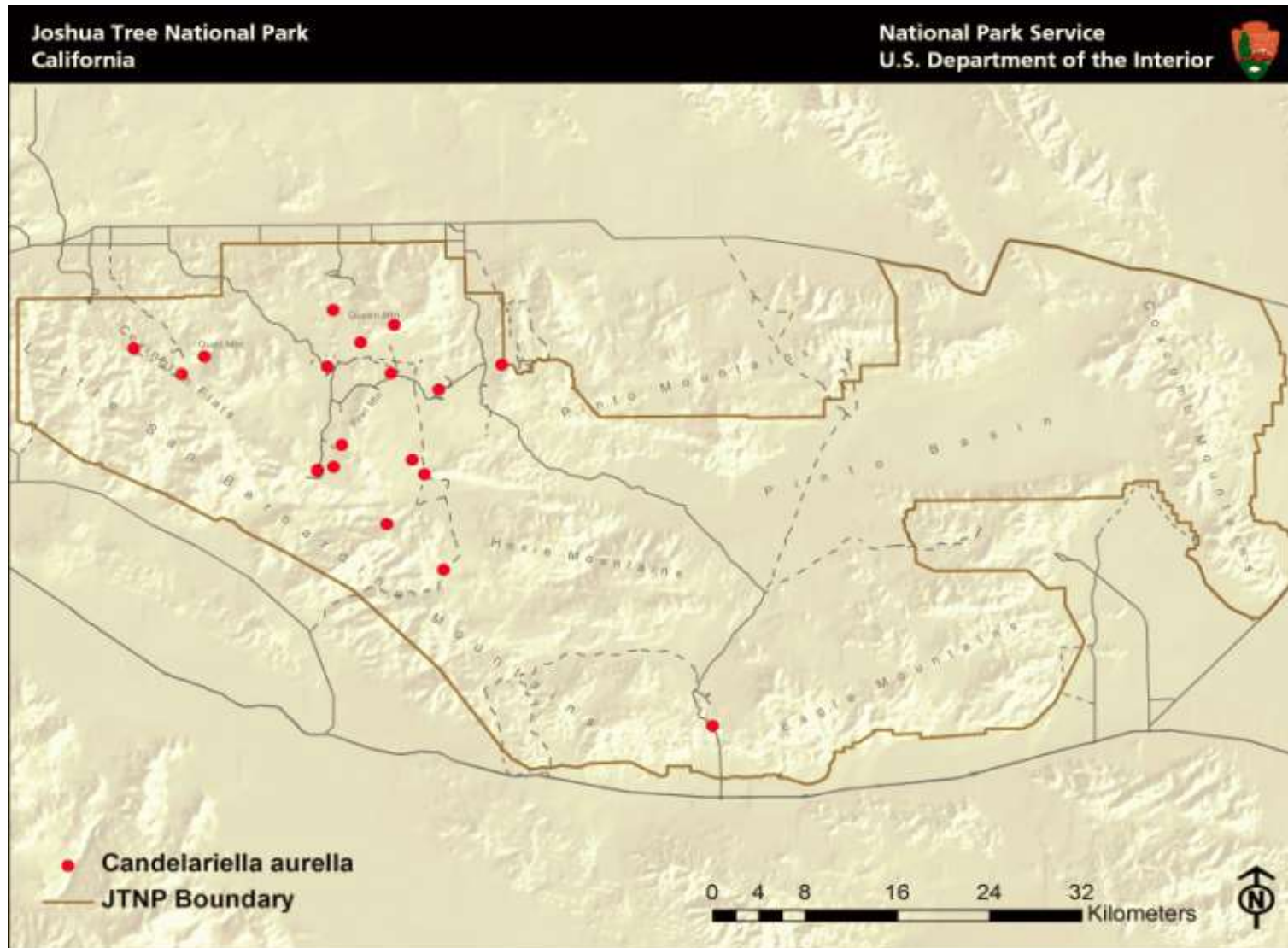
LITERATURE CITED

Westberg, M. 2004. *Candelariella*. In: T.H. Nash, III, B.D. Ryan, P. Diederich, C. Gries, and F. Bungartz (eds.) Lichen Flora of the Greater Sonoran Desert Region 2: 46–53. Lichens Unlimited, Tempe, AZ.

ACKNOWLEDGEMENTS

The work of Kerry Knudsen was funded by a co-operative agreement between Joshua Tree National Park and the University of California at Riverside (UCR). The work of Jana Kocourková was supported financially by the KONTAKT II, Program of International Cooperation in Research and development for scientific cooperation between the CR and USA, LH 11057 from Ministry of Education, Youth and Sports of the Czech Republic.

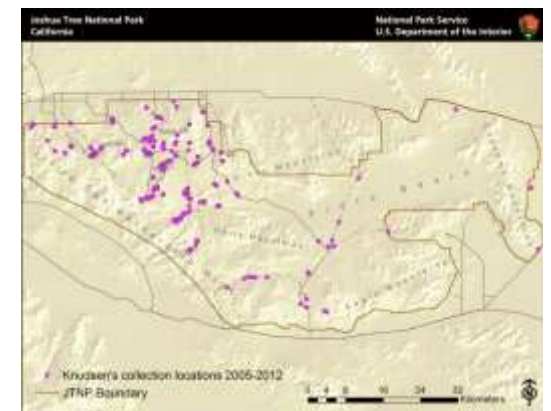
Candelariella aurella



Known distribution of *Candelariella aurella* in JTNP.



Location of Joshua Tree National Park in Southern California



All 238 of Knudsen's and Kocourková's lichen collection sites throughout Joshua Tree National Park between the years of 2005 and 2012.

Map collection, maps made in software ArcGIS, 10.1; electronic form, file type pdf.