

***Lobothallia praeradiosa* in the Joshua Tree National Park (California, U.S.A.)**

Map collection



Lobothallia praeradiosa. Photo by Jana Kocourková.

Kerry Knudsen, Kocourková Jana*

*Czech University of Life Sciences Prague, Faculty of Environmental Sciences, Department of Ecology, Czech Republic

© 2012

Abstract – *Lobothallia praeradiosa* is a cosmopolitan species. It is common in arid areas of southern California. It is documented by 43 specimens in the Mojave and Sonoran Deserts in Joshua Tree and is a dominant species in the park with *Acarospora socialis*. It grows non-calcareous rock; on basalt, gneiss, and monzogranite in Joshua Tree. The map of distribution of *L. praeradiosa* in Joshua Tree National Park is presented. We compiled a detailed list of records based on GPS data.

Key words – *Lobothallia praeradiosa*, lichens, map of distribution, Mojave and Sonoran Deserts

Authors – Kerry Knudsen¹, Kocourková Jana²

¹The Herbarium, Department of Botany & Plant Sciences, University of California Riverside, California 92521, U.S.A. – e-mail: Knudsen@ucr.edu

²University of Life Sciences Prague, Department of Ecology, Faculty of Environmental Sciences, Kamýcká 129, Praha 6 – Suchbát, CZ – 165 21, Czech Republic – e-mail: kocourkovaj@fzp.czu.cz

***Lobothallia praeradiosa* (Nyl.) Hafellner**

DESCRIPTION. – Ryan 2004.

WORLD DISTRIBUTION. – Cosmopolitan.

SUBSTRATE. – Non-calcareous rock; on basalt, gneiss, and monzogranite in Joshua Tree.

NOTES. – *Lobothallia praeradiosa* is common in arid areas of southern California. It is documented by 43 specimens in the Mojave and Sonoran Deserts in Joshua Tree and is a dominant species in the park with *Acarospora socialis*. Some specimens are severely reduced by abrasion, often only apothecia with a few areoles.

DISTRIBUTION. – Cottonwood Mountains, Hidden Valley, hills near west and north entrance, Juniper Flats, Little San Bernardino Mountains (Berdo Canyon, Eureka Peak, Pushwalla), Lost Horse Mountains, Lost Horse Valley, lower and upper Covington Flats, Malapai Hill (on monzogranite and basalt), Pinkham Canyon, Pinto Mountains (Belle Mountain), Queen Mountain, Queen Valley, Ryan Mountain, Skull Rock, Squaw Tank, Stirrup Tank, Wonderland of Rocks (Indian Cove, near west entrance, Keys Ranch).

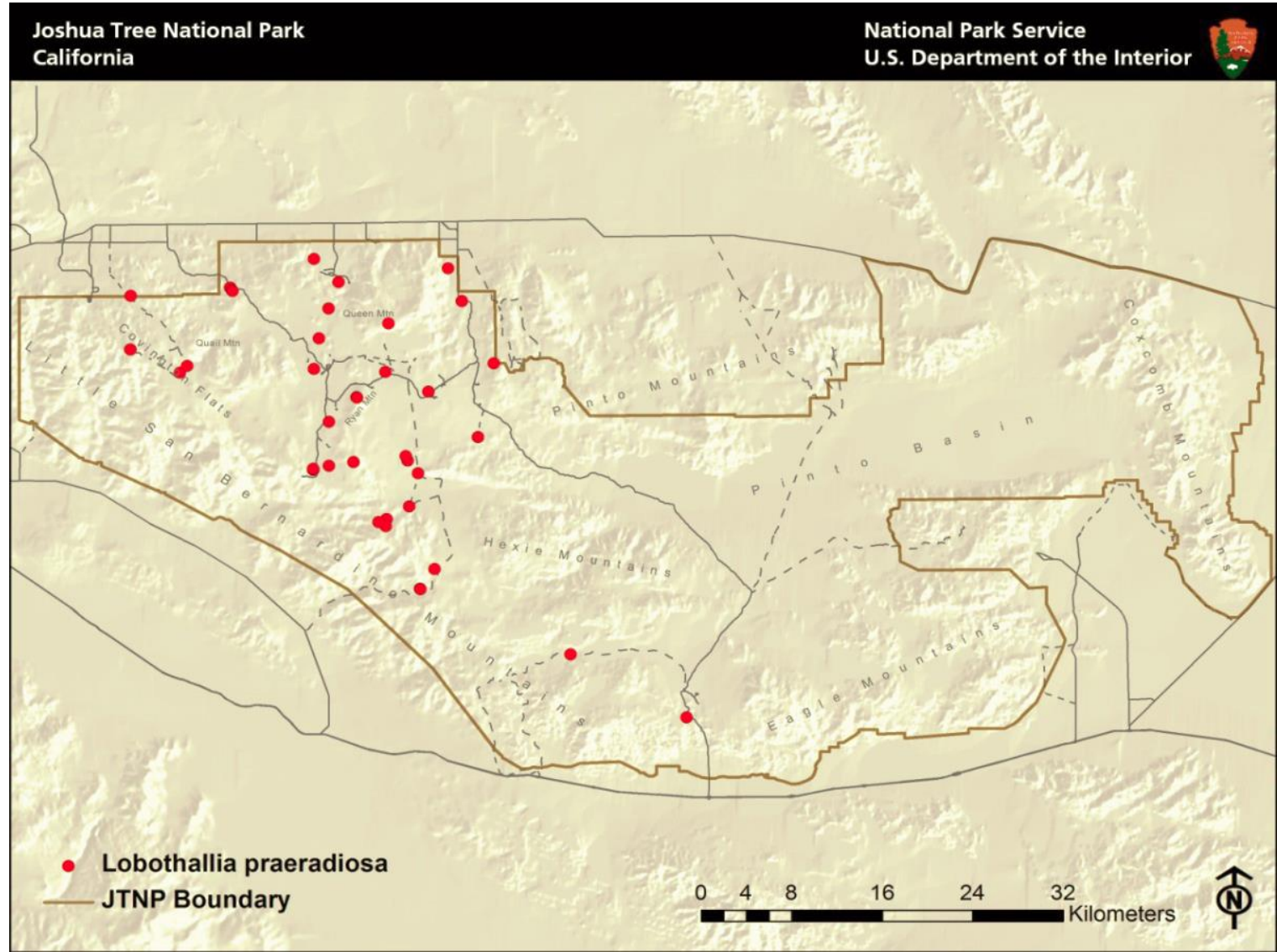
LITERATURE CITED

Ryan, B.D. 2004, *Lobothallia*. In: T.H. Nash III, B.D. Ryan, P. Diederich, C. Gries, and F. Bungartz (eds.) Lichen Flora of the Greater Sonoran Desert Region 2: 352–357. Lichens Unlimited, Tempe, AZ.

ACKNOWLEDGEMENTS

The work of Kerry Knudsen was funded by a co-operative agreement between Joshua Tree National Park and the University of California at Riverside (UCR). The work of Jana Kocourková was supported financially by the KONTAKT II, Program of International Cooperation in Research and development for scientific cooperation between the CR and USA, LH 11057 from Ministry of Education, Youth and Sports of the Czech Republic.

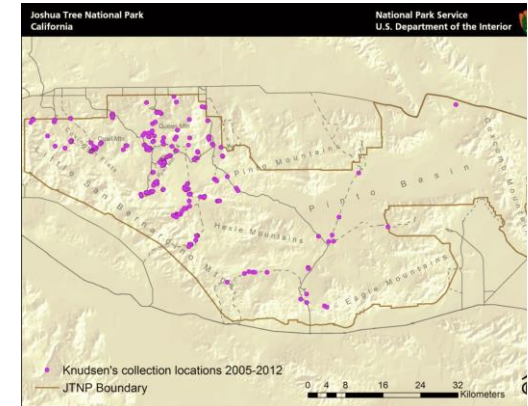
Lobothallia praeradiosa



Known distribution of *Lobothallia praeradiosa* in JTNP.



Location of Joshua Tree National Park in Southern California



All 238 of Knudsen's and Kocourková's lichen collection sites throughout Joshua Tree National Park between the years of 2005 and 2012.

Map collection, maps made in software ArcGIS, 10.1; electronic form, file type pdf.