

***Placocarpus americanus* in the Joshua Tree National Park (California, U.S.A.)**

Map collection



Placocarpus americanus. Photo by Jana Kocourková.

Kerry Knudsen, Kocourková Jana*

*Czech University of Life Sciences Prague, Faculty of Environmental Sciences, Department of Ecology, Czech Republic

Abstract – *Placocarpus americanus* is only known in western North America in Arizona and California. The parasitic lichen was described from the Santa Monica Mountains in southern California and was recently collected in Arizona. It is documented only by 3 collections found of 238 surveyed localities in the Sonoran and Mojave Deserts of Joshua Tree, but is actually frequent though often very poorly developed and therefore very probably overlooked. The map of distribution of *P. americanus* in Joshua Tree National Park is presented. We compiled a detailed list of records based on GPS data.

Key words – *Placocarpus americanus*, lichenicolous lichen, map of distribution, Mojave and Sonoran Deserts

Authors – Kerry Knudsen¹, Kocourková Jana²

¹The Herbarium, Department of Botany & Plant Sciences, University of California Riverside, California 92521, U.S.A. – e-mail: Knudsen@ucr.edu

²University of Life Sciences Prague, Department of Ecology, Faculty of Environmental Sciences, Kamýcká 129, Praha 6 – Suchbát, CZ – 165 21, Czech Republic – e-mail: kocourkovaj@fzp.czu.cz

***Placocarpus americanus* K. Knudsen, Breuss & Kocourk.**

DESCRIPTION. – Knudsen et al. 2009.

WORLD DISTRIBUTION. – Western North America (Arizona, California).

SUBSTRATE. – Usually on *Lecanora muralis*.

NOTES. – *Placocarpus americanus* was described from the Santa Monica Mountains in southern California and was recently collected in Arizona (Kocourková et al. 2012). It is a lichenicolous lichen, beginning as a juvenile parasite on *Lecanora muralis* (rarely on *Rhizoplaca chrysoleuca* and *L. garovaglioii*) and developing an independent grey thallus. Sometimes only its perithecia are found growing on the host. It is documented by 3 collections in the Sonoran and Mojave Deserts of Joshua Tree, but is actually frequent though often poorly developed.

DISTRIBUTION. – Cottonwood Mountains, Little San Bernardino Mountains (Berdo Canyon).

LITERATURE CITED

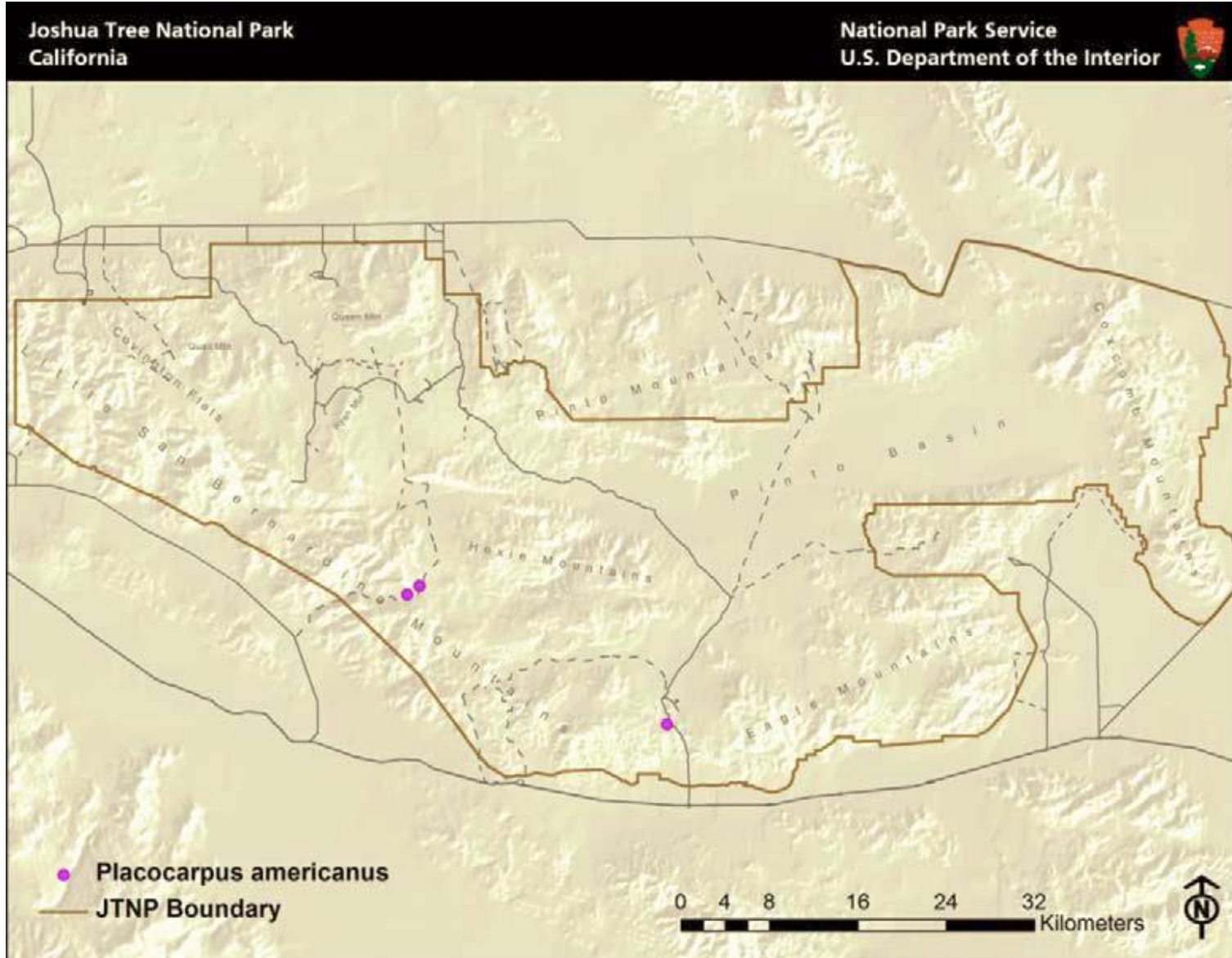
Knudsen, K., O. Breuss and J. Kocourková. 2009b. A new species of *Placocarpus* (Verrucariaceae) from southern California. *The Lichenologist*, 41: 627–630.

Kocourková, J., K. Knudsen, and S. Tucker. 2012. A Checklist of the Lichenicolous Biota of California. *Opuscula Philolichenum* 11: 64–103.

ACKNOWLEDGEMENTS

The work of Kerry Knudsen was funded by a co-operative agreement between Joshua Tree National Park and the University of California at Riverside (UCR). The work of Jana Kocourková was supported financially by the KONTAKT II, Program of International Cooperation in Research and development for scientific cooperation between the CR and USA, LH 11057 from Ministry of Education, Youth and Sports of the Czech Republic.

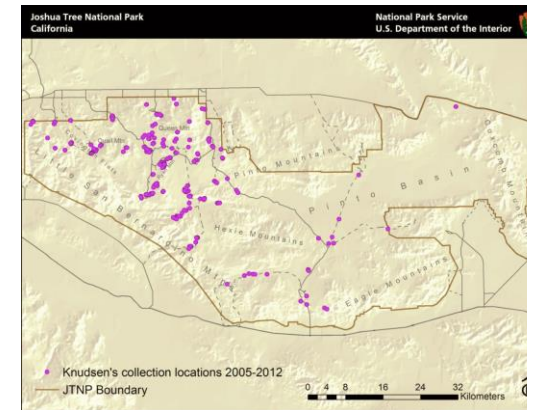
Placocarpus americanus



Known distribution of *Placocarpus americanus* in JTNP.



Location of Joshua Tree National Park in Southern California



All 238 of Knudsen's and Kocourková's lichen collection sites throughout Joshua Tree National Park between the years of 2005 and 2012.

Map collection, maps made in software ArcGIS, 10.1; electronic form, file type pdf.