

***Psora tuckermanii* in the Joshua Tree National Park (California, U.S.A.)**

**Map collection**



*Psora tuckermanii*. Photo by Tim Wheeler.

**Kerry Knudsen, Kocourková Jana\***

\*Czech University of Life Sciences Prague, Faculty of Environmental Sciences, Department of Ecology, Czech Republic

© 2012

**Abstract** – *Psora tuckermanii* is only known in North America. It is common in the southern California deserts and is part of the Basin and Range flora. It is documented by 16 collections in the Sonoran and Mojave Deserts in Joshua Tree. It occurs on non-calcareous rock, coarse and consolidated soil; on gneiss and monzogranite in Joshua Tree. The map of distribution of *P. tuckermanii* in Joshua Tree National Park is presented. We compiled a detailed list of records based on GPS data.

**Key words** – *Psora tuckermanii*, lichens, map of distribution, Mojave and Sonoran Deserts, southern California

**Authors** – Kerry Knudsen<sup>1</sup>, Kocourková Jana<sup>2</sup>

<sup>1</sup>The Herbarium, Department of Botany & Plant Sciences, University of California Riverside, California 92521, U.S.A. – e-mail: Knudsen@ucr.edu

<sup>2</sup>University of Life Sciences Prague, Department of Ecology, Faculty of Environmental Sciences, Kamýcká 129, Praha 6 – Suchbát, CZ – 165 21, Czech Republic – e-mail: kocourkovaj@fzp.czu.cz

### ***Psora tuckermanii* R. A. Anderson ex Timdal**

DESCRIPTION. – Timdal 2002.

WORLD DISTRIBUTION. – North America.

SUBSTRATE. – Non-calcareous rock, coarse and consolidated soil; on gneiss and monzogranite in Joshua Tree.

NOTES. – *Psora tuckermanii* is common in the southern California deserts and is part of the Basin and Range flora. It is documented by 16 collections in the Sonoran and Mojave Deserts in Joshua Tree.

DISTRIBUTION. – Cottonwood Mountains (Cottonwood Canyon), Little San Bernardino Mountains (above Geology Tour Road, Berdoo Canyon, Eureka Peak, Pushwalla), Lost Horse Mountains, Pinto Basin, Wonderland of Rocks (Indian Cove, Keys Ranch, near west entrance, Rattlesnake Canyon).

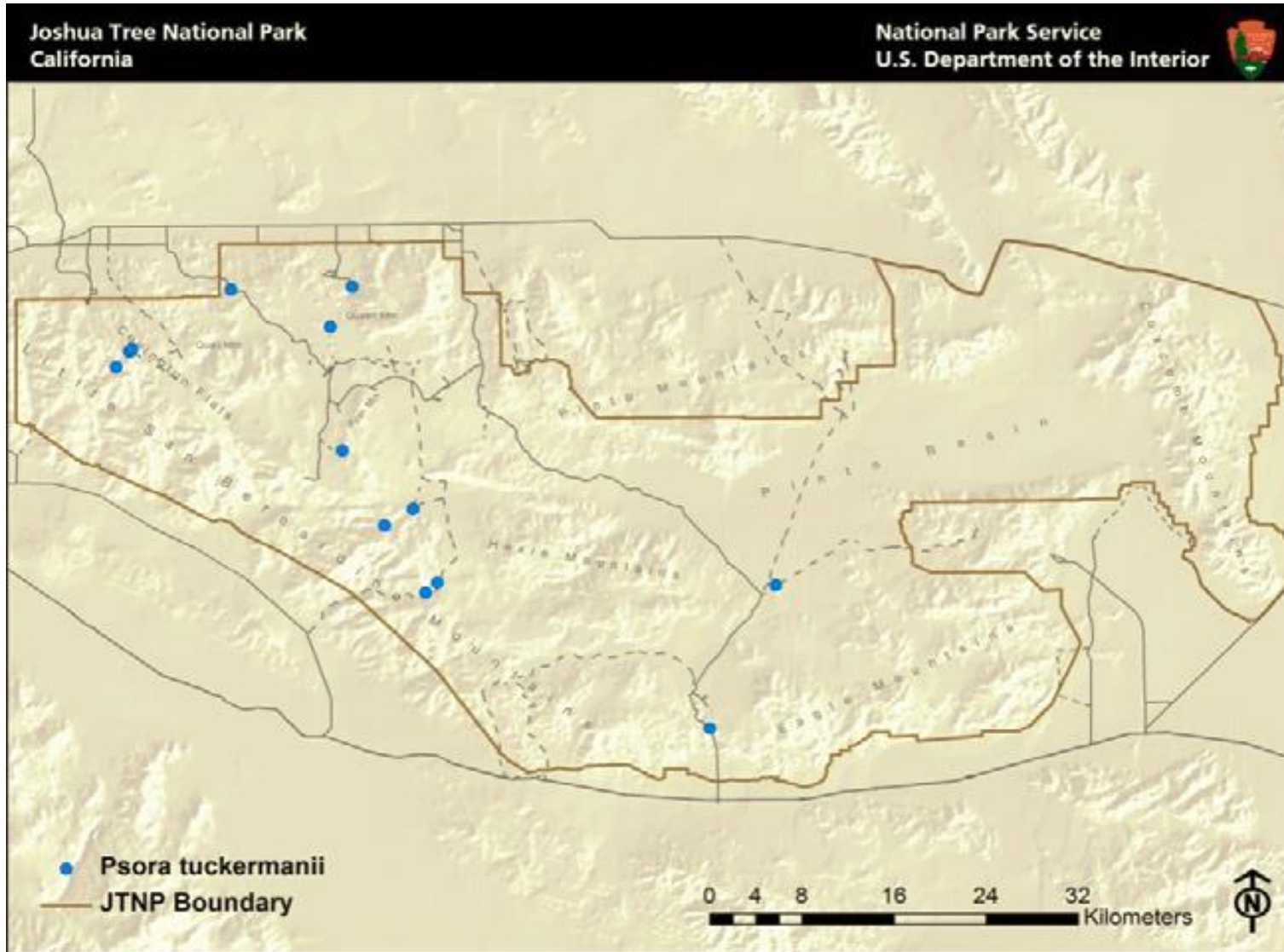
### LITERATURE CITED

Timdal, E. 2002. *Psora*. In: T.H. Nash III, B.D. Ryan, C. Gries, and F. Bungartz (eds.) Lichen Flora of the Greater Sonoran Desert Region 1: 418–430. Lichens Unlimited, Tempe, AZ.

### ACKNOWLEDGEMENTS

The work of Kerry Knudsen was funded by a co-operative agreement between Joshua Tree National Park and the University of California at Riverside (UCR). The work of Jana Kocourková was supported financially by the KONTAKT II, Program of International Cooperation in Research and development for scientific cooperation between the CR and USA, LH 11057 from Ministry of Education, Youth and Sports of the Czech Republic.

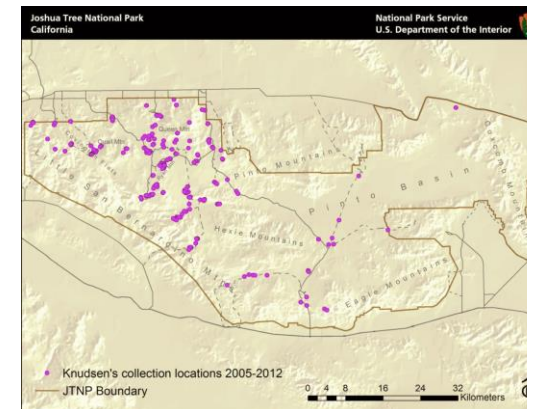
*Psora tuckermanii*



Known distribution of *Psora tuckermanii* in JTNP.



Location of Joshua Tree National Park in Southern California



All 238 of Knudsen's and Kocourková's lichen collection sites throughout Joshua Tree National Park between the years of 2005 and 2012.

Map collection, maps made in software ArcGIS, 10.1; electronic form, file type pdf.