

***Xanthoria elegans* in the Joshua Tree National Park (California, U.S.A.)**

Map collection



Xanthoria elegans. Photo by Jana Kocourková.

Kerry Knudsen, Kocourková Jana*

*Czech University of Life Sciences Prague, Faculty of Environmental Sciences, Department of Ecology, Czech Republic

© 2012

Abstract – *Xanthoria elegans* is a cosmopolitan species. It is common throughout California and is also common in the Mojave Desert in Joshua Tree National Park. It is documented by 28 collections in the Mojave Desert in Joshua Tree. The species grows on non-calcareous rock, rarely on soil; on gneiss and monzogranite. The map of known distribution of *X. elegans* in Joshua Tree is presented. We compiled a detailed list of records based on GPS data.

Key words – *Xanthoria elegans*, lichens, map of distribution, Mojave Desert

Authors – Kerry Knudsen¹, Kocourková Jana²

¹The Herbarium, Department of Botany & Plant Sciences, University of California Riverside, California 92521, U.S.A. – e-mail: Knudsen@ucr.edu

²University of Life Sciences Prague, Department of Ecology, Faculty of Environmental Sciences, Kamýcká 129, Praha 6 – Suchbátka, CZ – 165 21, Czech Republic – e-mail: kocourkovaj@fzp.czu.cz

***Xanthoria elegans* (Link) Th. Fr.**

DESCRIPTION. – Lindblom 2004.

WORLD DISTRIBUTION. – Cosmopolitan.

SUBSTRATE. – Non-calcareous or calcareous rock; on basalt, gneiss and monzogranite in Joshua Tree.

NOTES. – *Xanthoria elegans* is common in California. It is documented by 28 collections in the Mojave Desert in Joshua Tree.

DISTRIBUTION. – Juniper Flats, Little San Bernardino Mountains (Black Rock, Eureka Peak, Pushwalla), Lost Horse Mountains (on basalt), Lost Horse Valley, lower and upper Covington Flats, Queen Mountain, Saddle Rock, Sheep's Pass, Smith Water Canyon, Wonderland of Rocks (Keys Ranch).

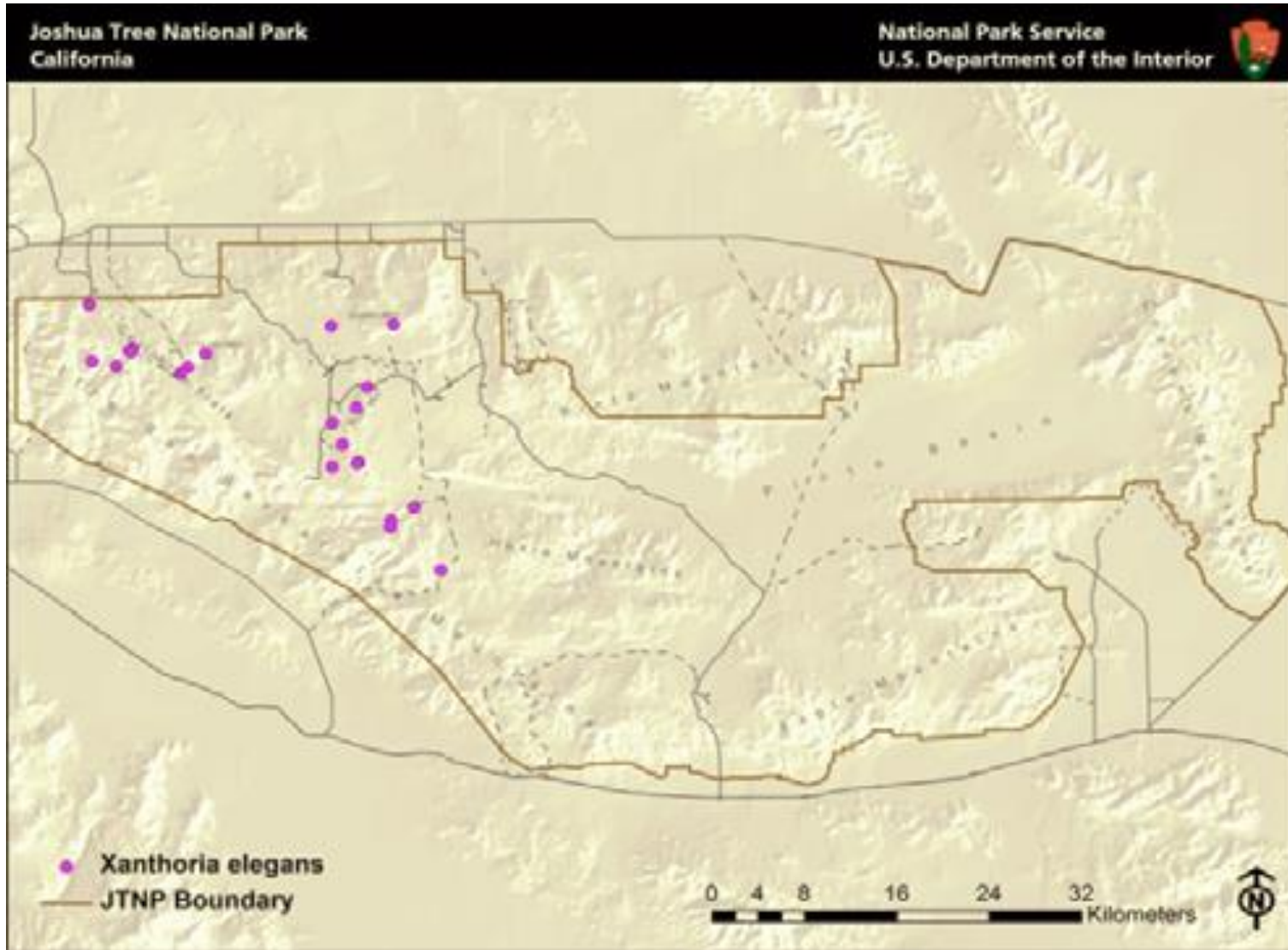
LITERATURE CITED

Lindblom, L. 2004. *Xanthomendoza*. In: T.H. Nash III, B.D. Ryan, P. Diederich, C. Gries, and F. Bungartz (eds.) Lichen Flora of the Greater Sonoran Desert Region 2: 561–566. Lichens Unlimited, Tempe, AZ.

ACKNOWLEDGEMENTS

The work of Kerry Knudsen was funded by a co-operative agreement between Joshua Tree National Park and the University of California at Riverside (UCR). The work of Jana Kocourková was supported financially by the KONTAKT II, Program of International Cooperation in Research and development for scientific cooperation between the CR and USA, LH 11057 from Ministry of Education, Youth and Sports of the Czech Republic.

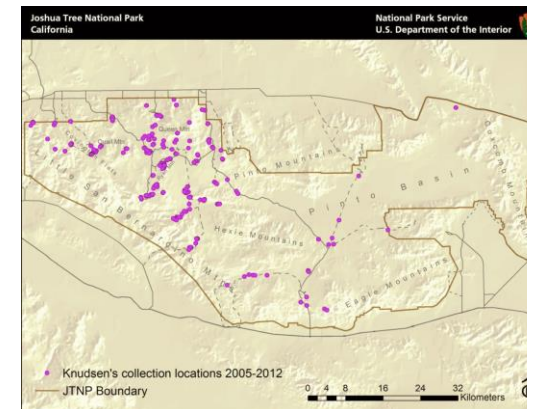
Xanthoria elegans



Known distribution of *Xanthoria elegans* in JTNP.



Location of Joshua Tree National Park in Southern California



All 238 of Knudsen's and Kocourková's lichen collection sites throughout Joshua Tree National Park between the years of 2005 and 2012.

Map collection, maps made in software ArcGIS, 10.1; electronic form, file type pdf.