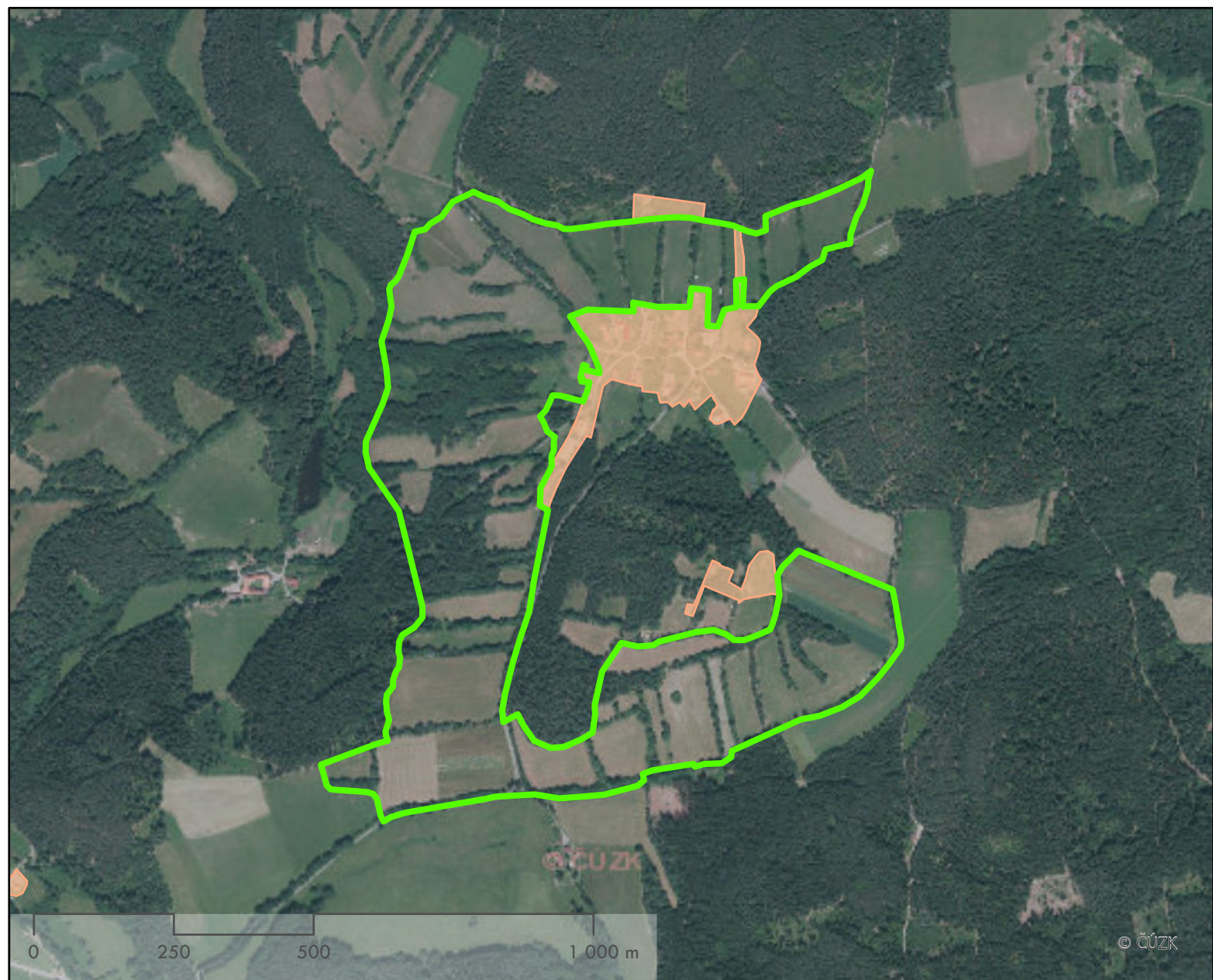



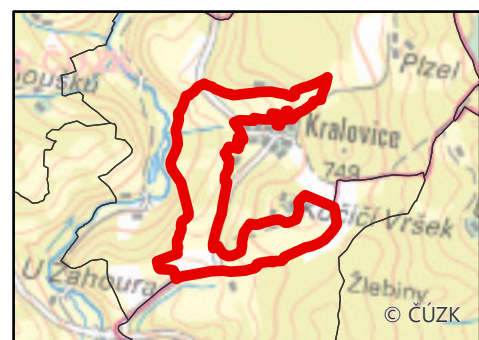
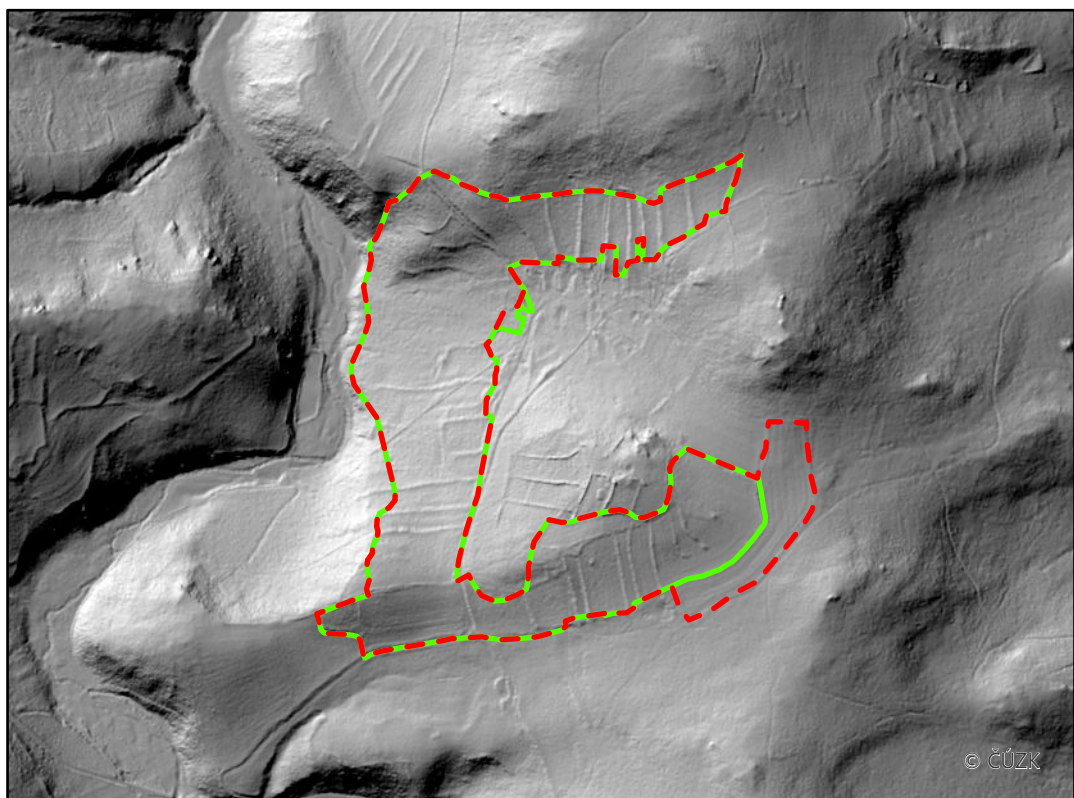


Katastrální území: Kralovice / Jihočeský kraj
Rozloha plužiny: 50,4 ha



-  Obvod plužiny
-  Obvod plužiny (dle modelu terénu)
-  Zastavěné území



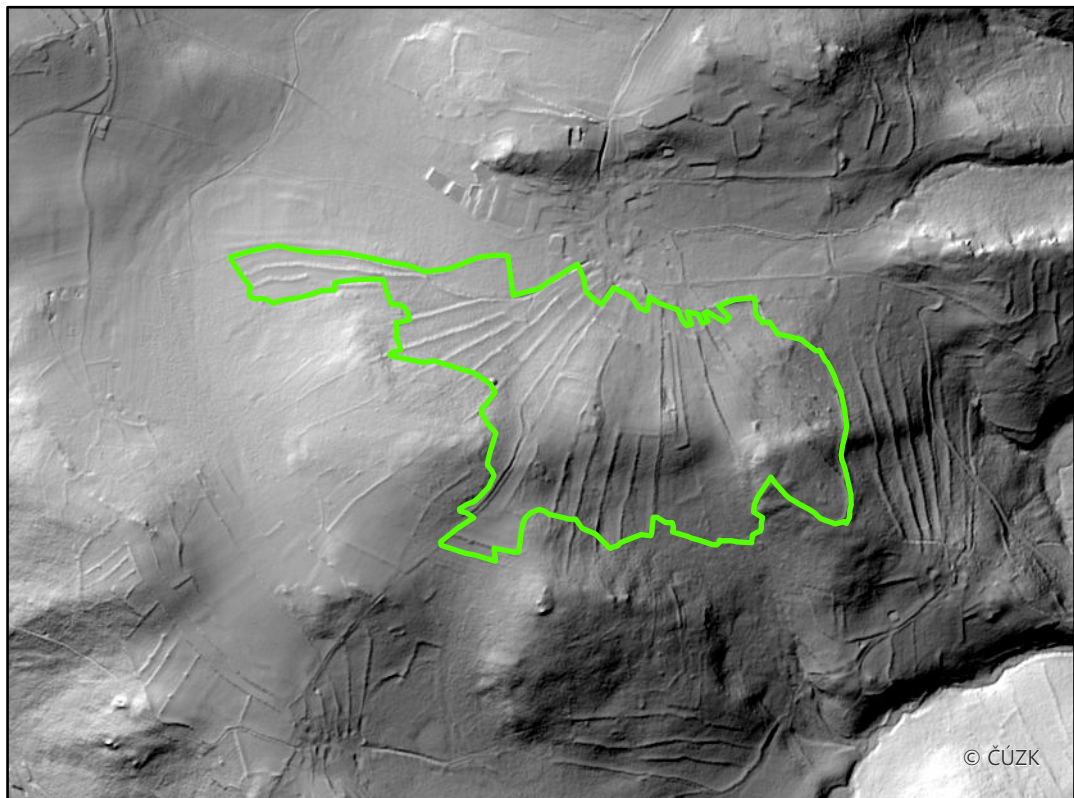
Katastrální území: Nebahovy / Jihočeský kraj

Rozloha plužiny: 90,6 ha

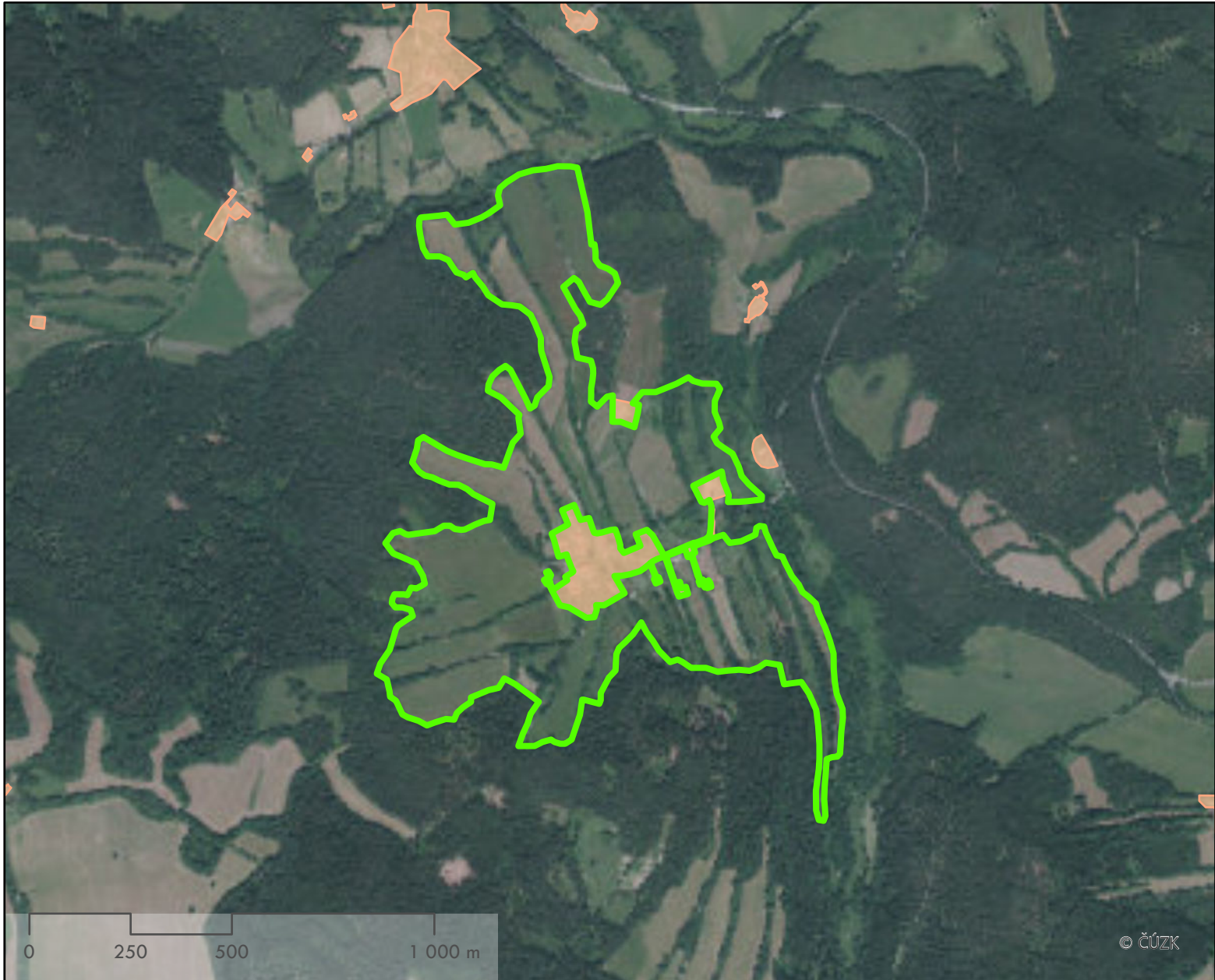




 Obvod plužiny

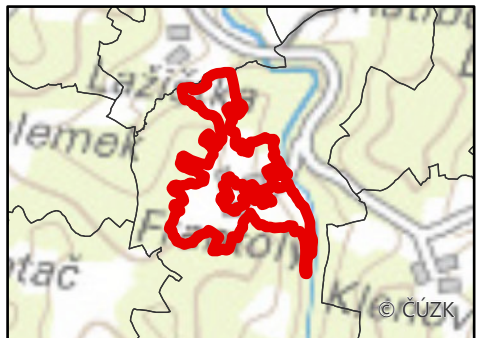
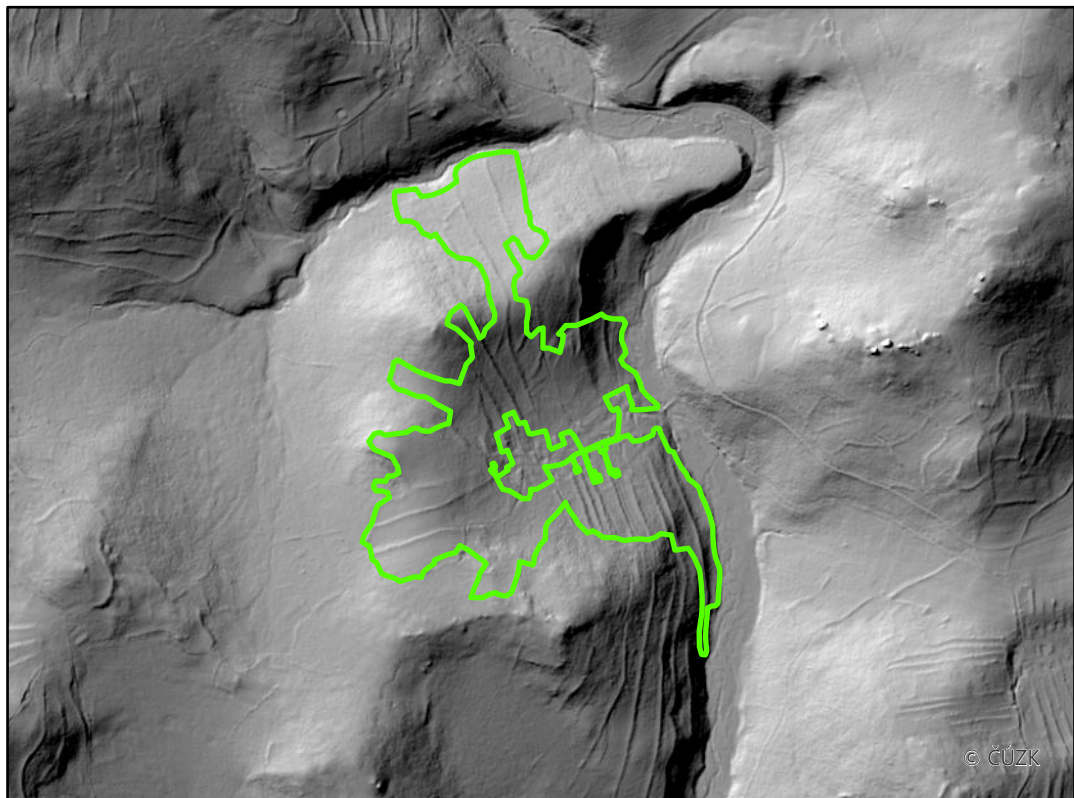
 Zastavěné území



Katastrální území: Frantoly / Jihočeský kraj
Rozloha plůžiny: 69,2 ha





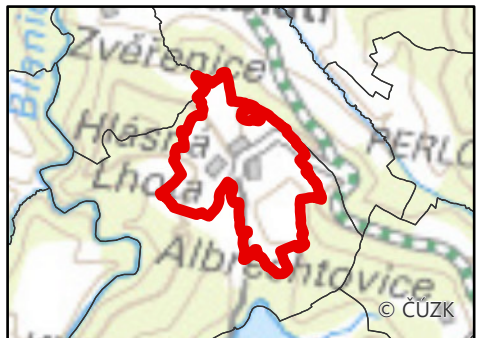
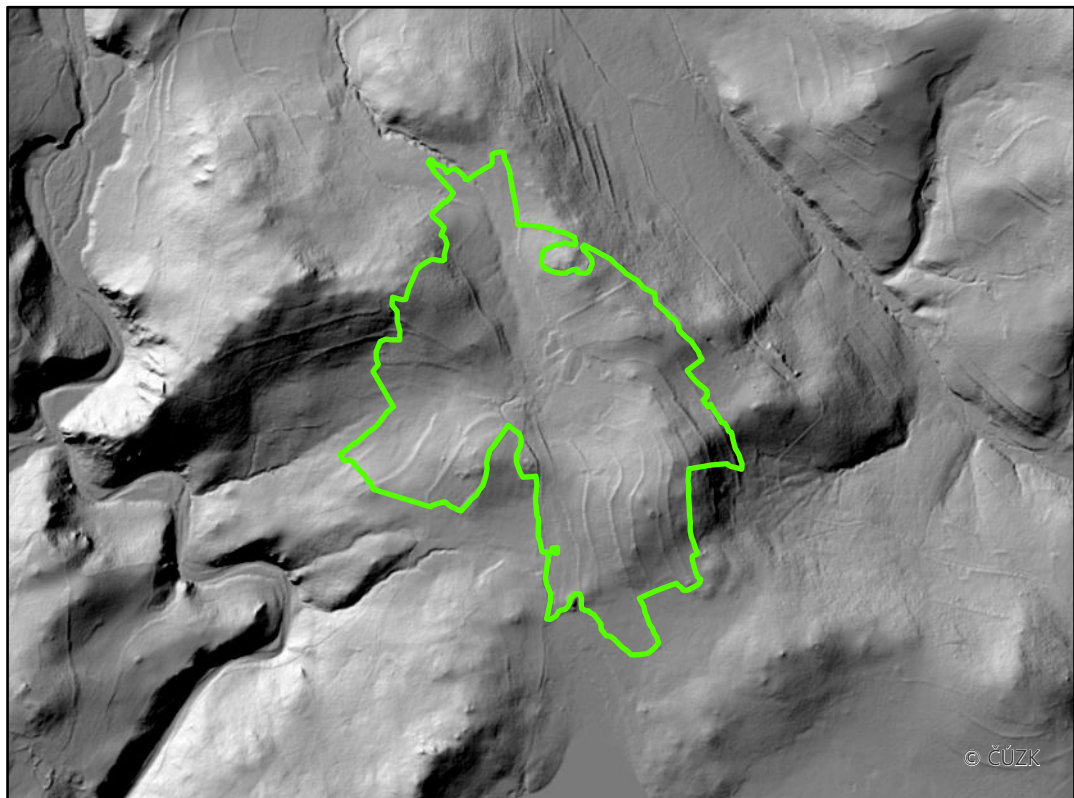
-  Obvod plůžiny
-  Zastavěné území



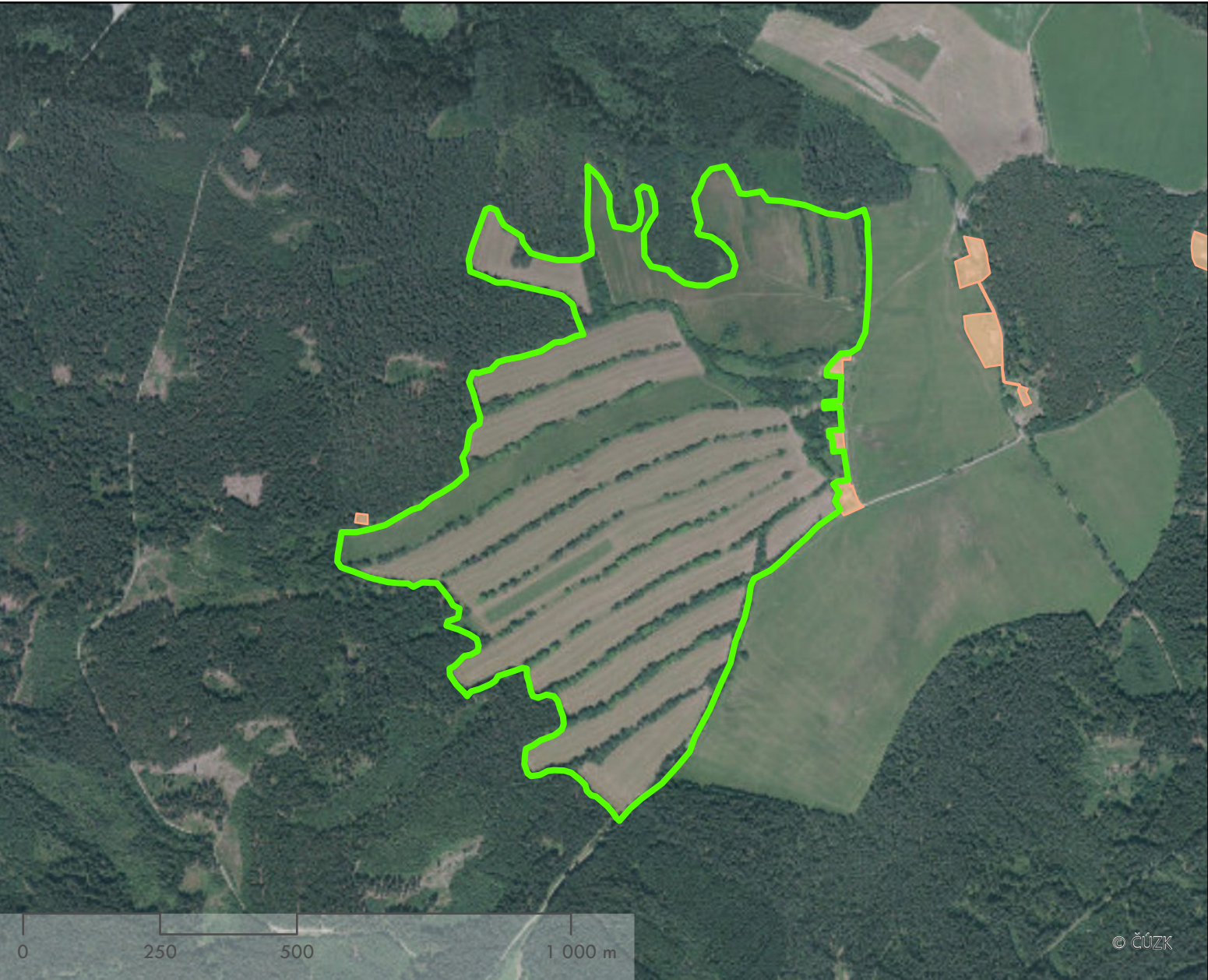
Katastrální území: Hlásná Lhota / Jihočeský kraj
Rozloha plužiny: 112,4 ha



-  Obvod plužiny
-  Zastavěné území

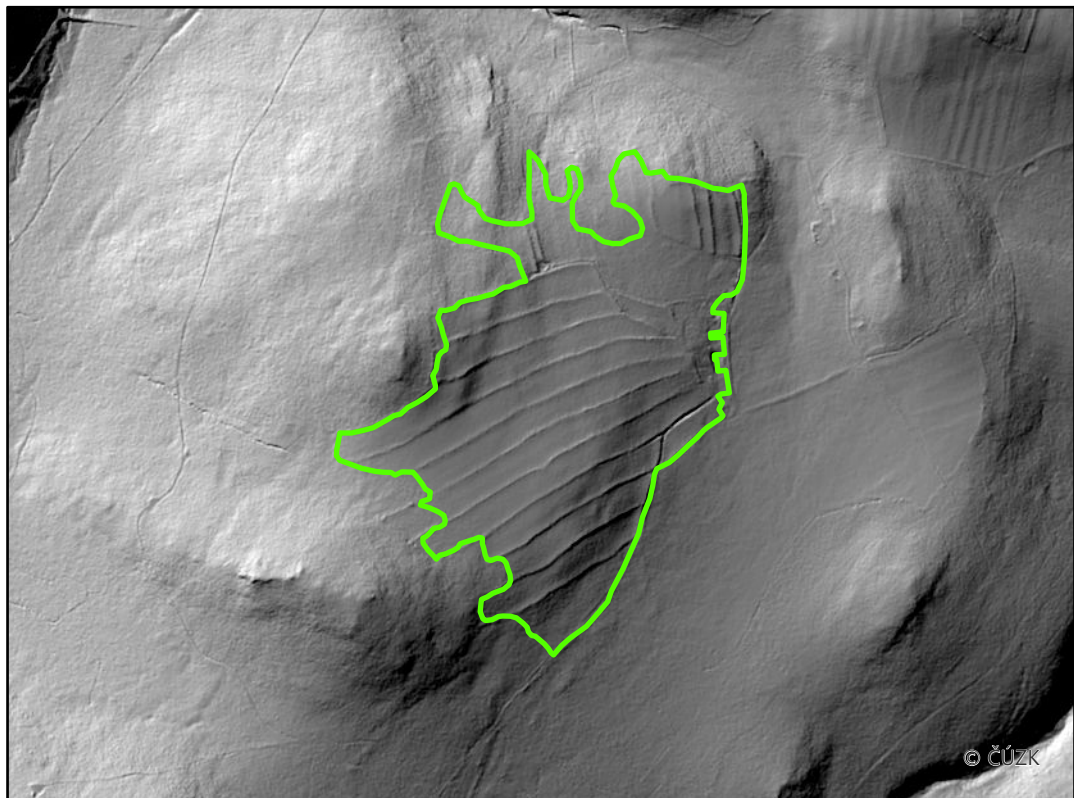


Katastrální území: Veselka u Vimperka / Jihočeský kraj
Rozloha plužiny: 59,4 ha



 Obvod plužiny

 Zastavěné území

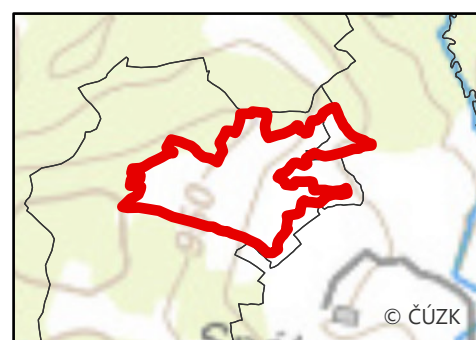
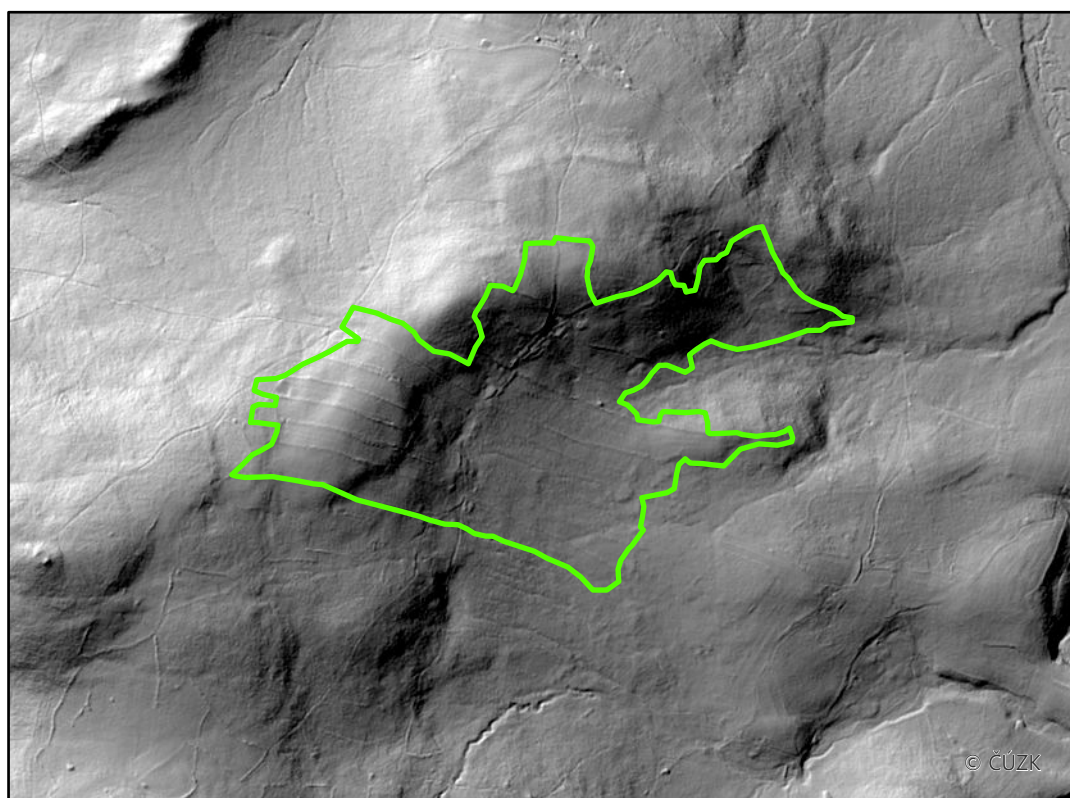


Katastrální území: Horní Sněžná / Jihočeský kraj
Rozloha plůžiny: 88,5 ha



 Obvod plůžiny

 Zastavěné území

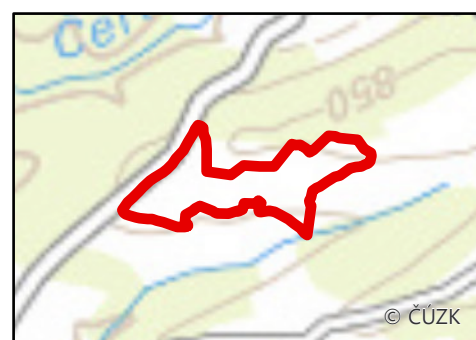
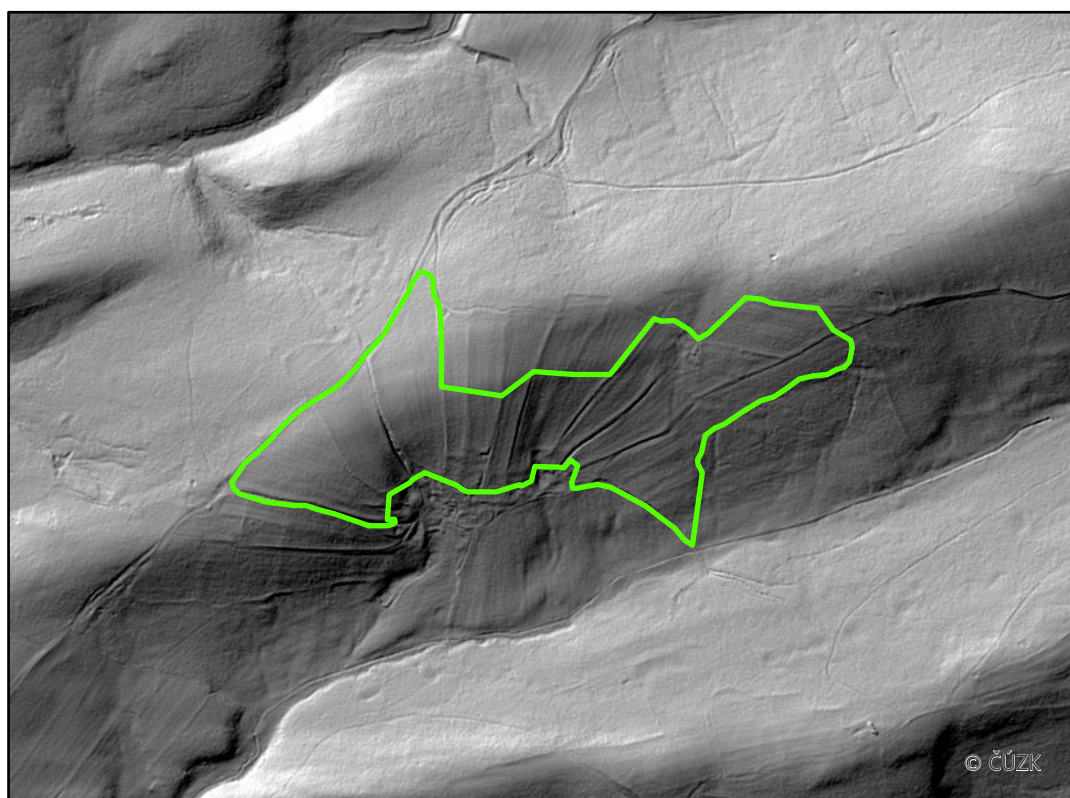


Katastrální území: Frymburk / Jihočeský kraj
Rozloha plůžiny: 54,8 ha

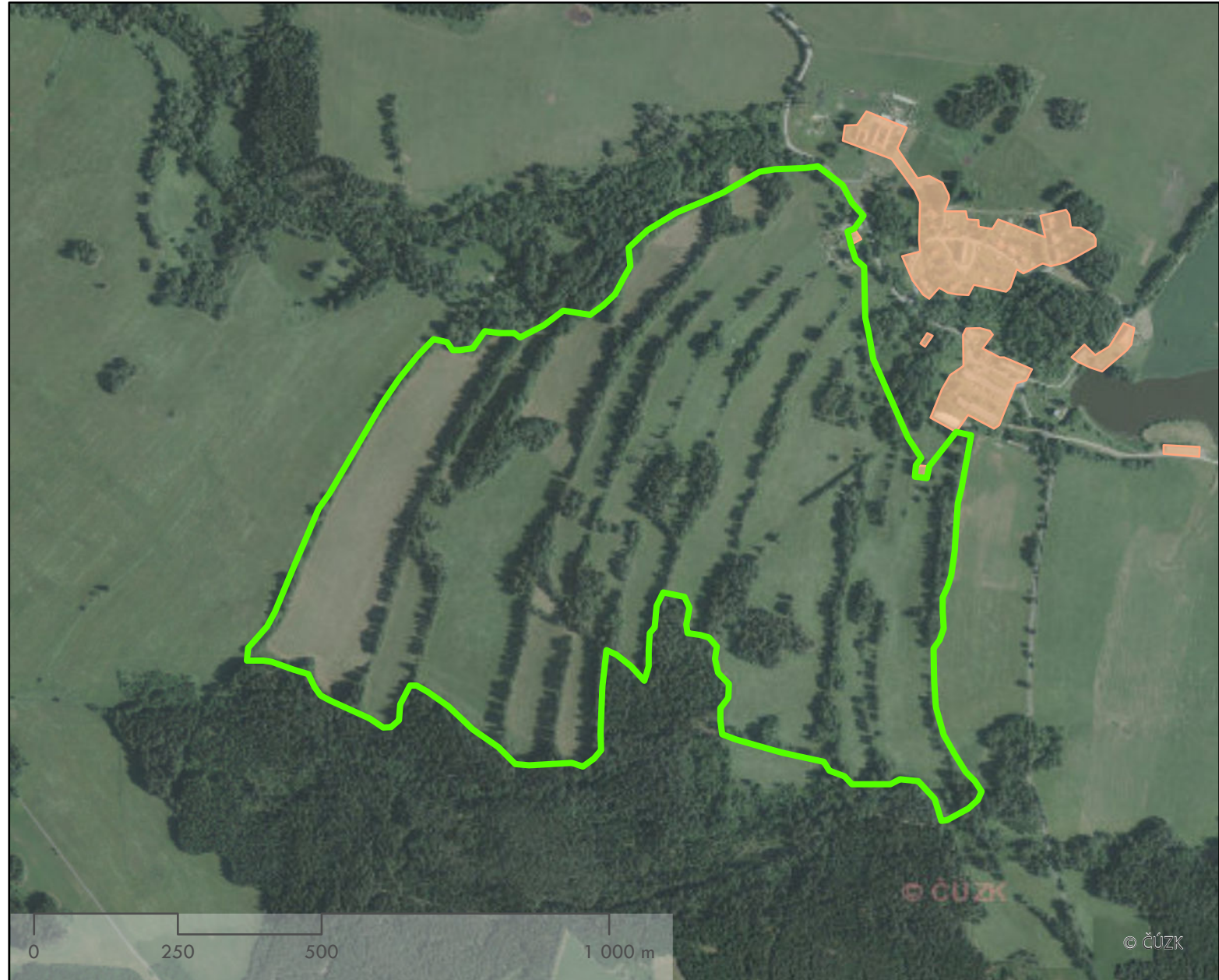


 Obvod plůžiny

 Zastavěné území

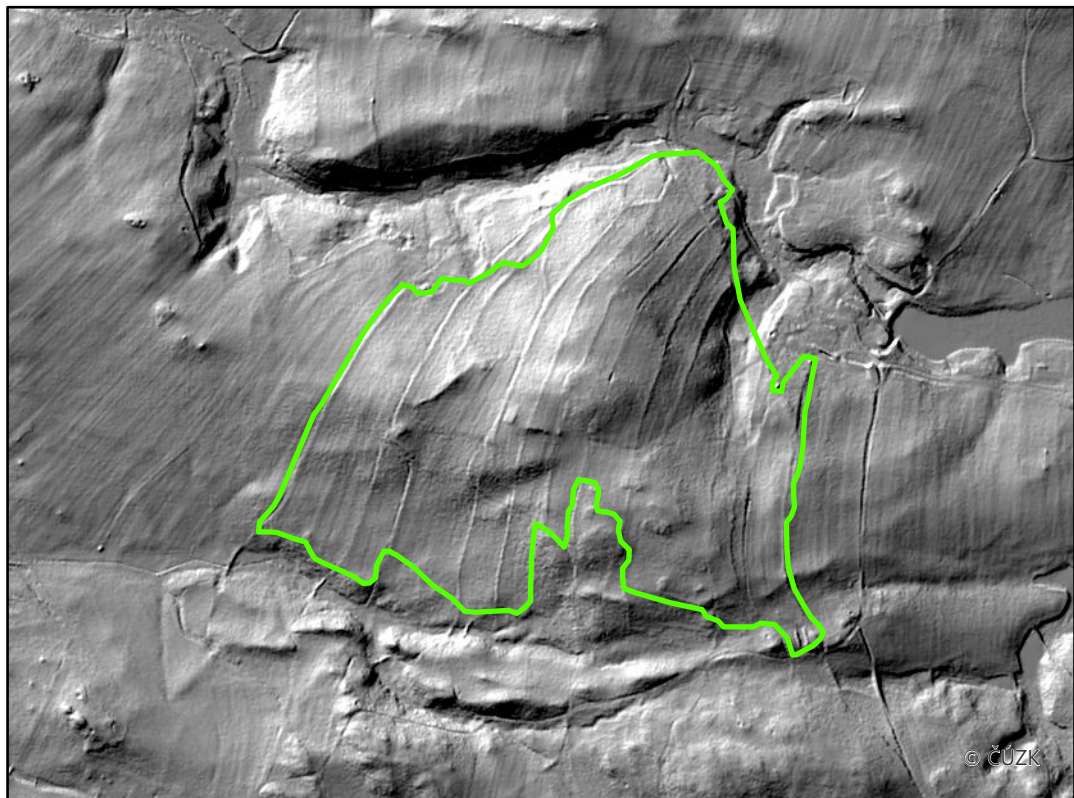


Katastrální území: Tichá / Jihočeský kraj
Rozloha plužiny: 82,2 ha



 Obvod plužiny

 Zastavěné území

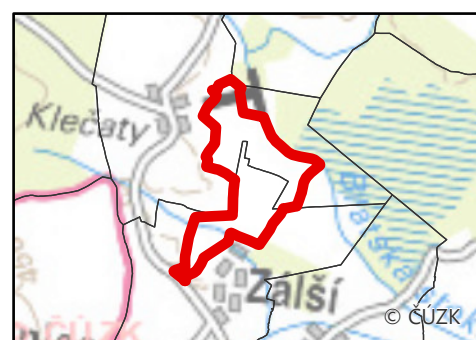
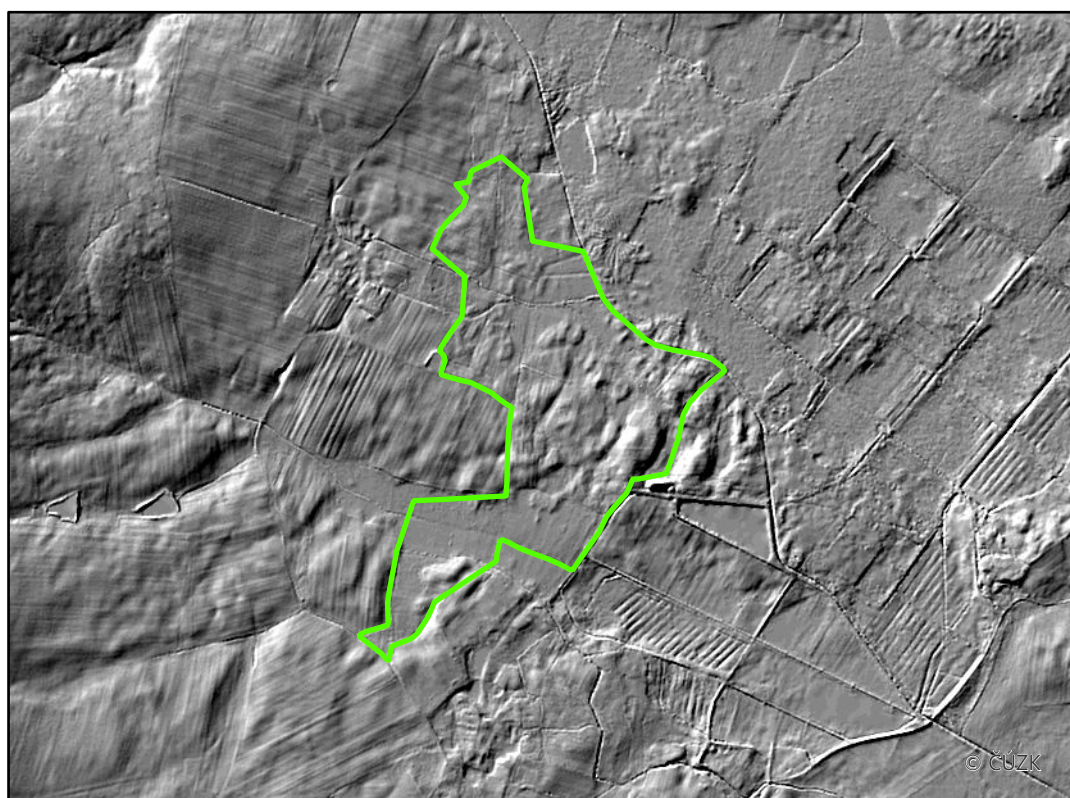


Katastrální území: Zálší / Jihočeský kraj
Rozloha plužiny: 114,2 ha

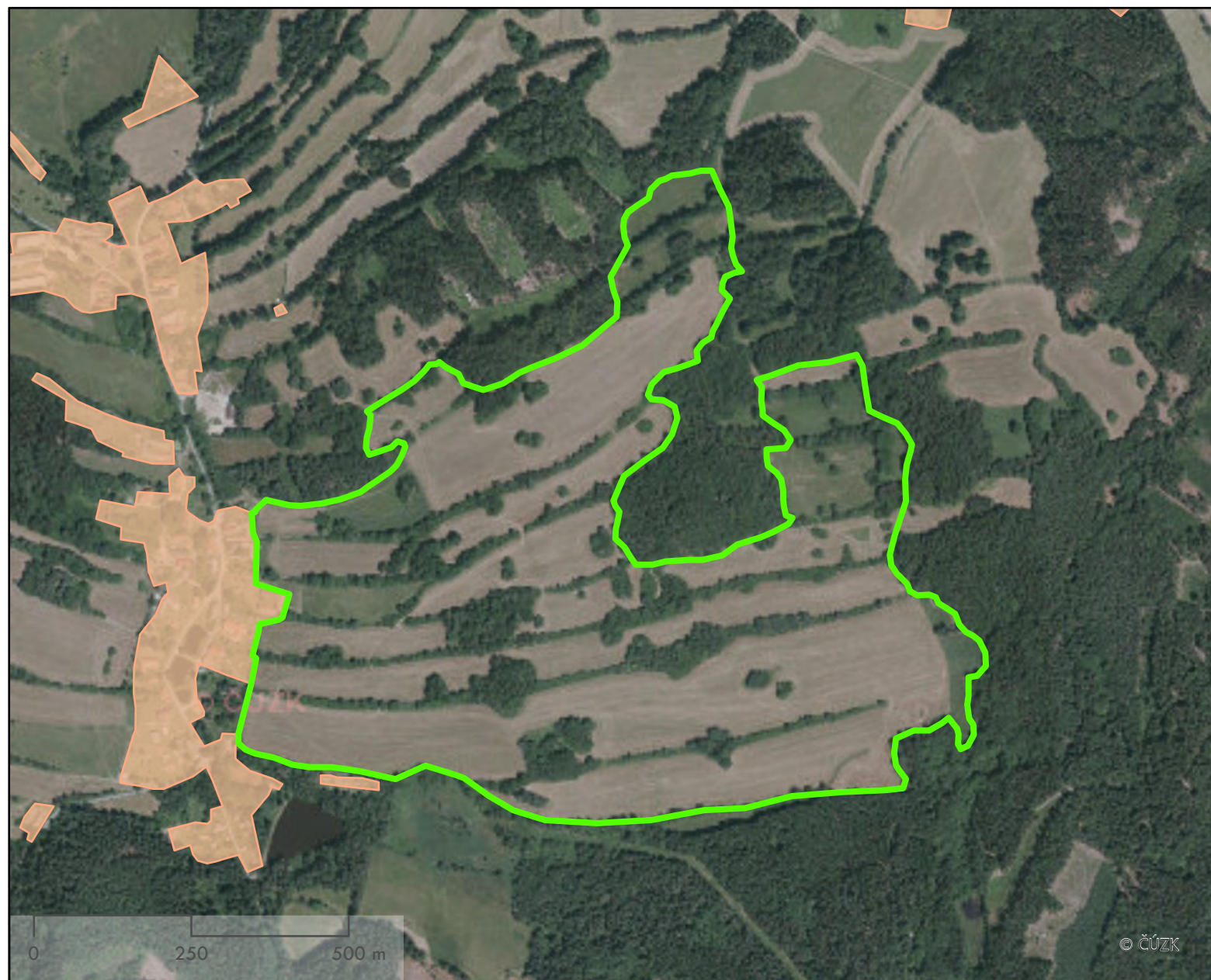


 Obvod plužiny

 Zastavěné území

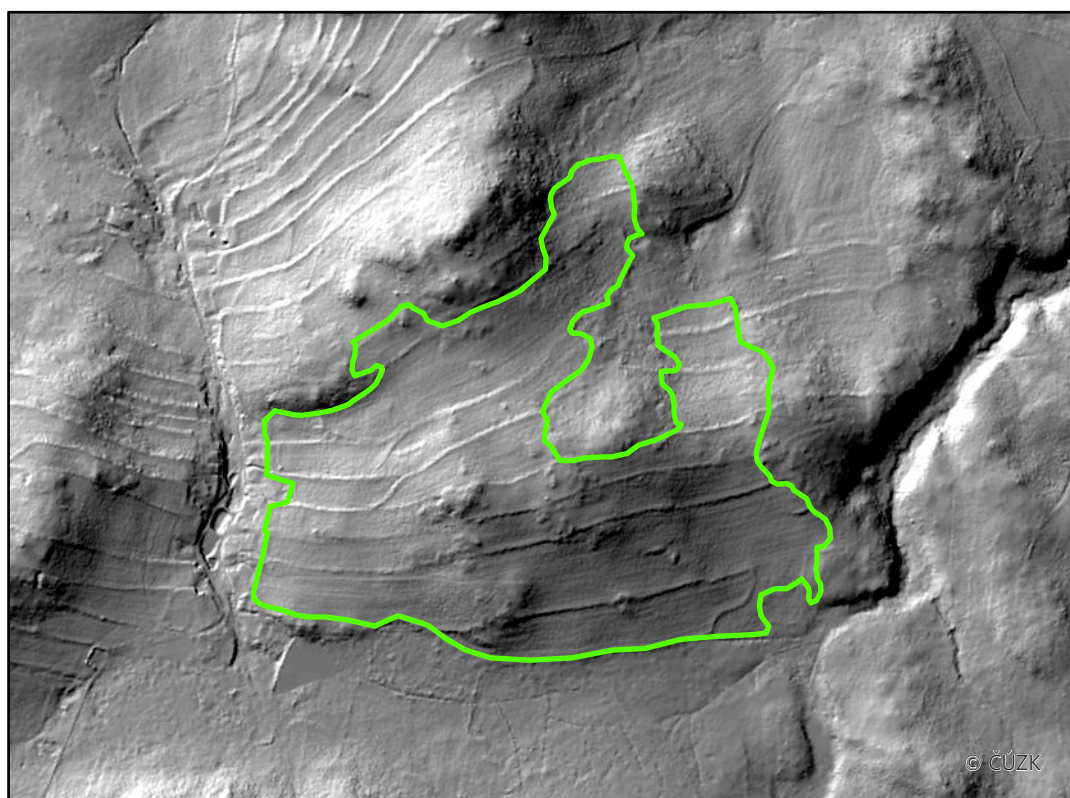
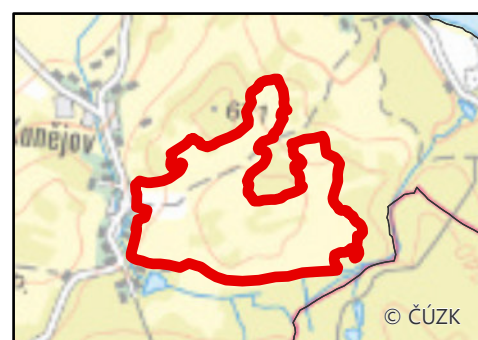


Katastrální území: Kunějov / Jihočeský kraj
Rozloha plužiny: 65,8 ha

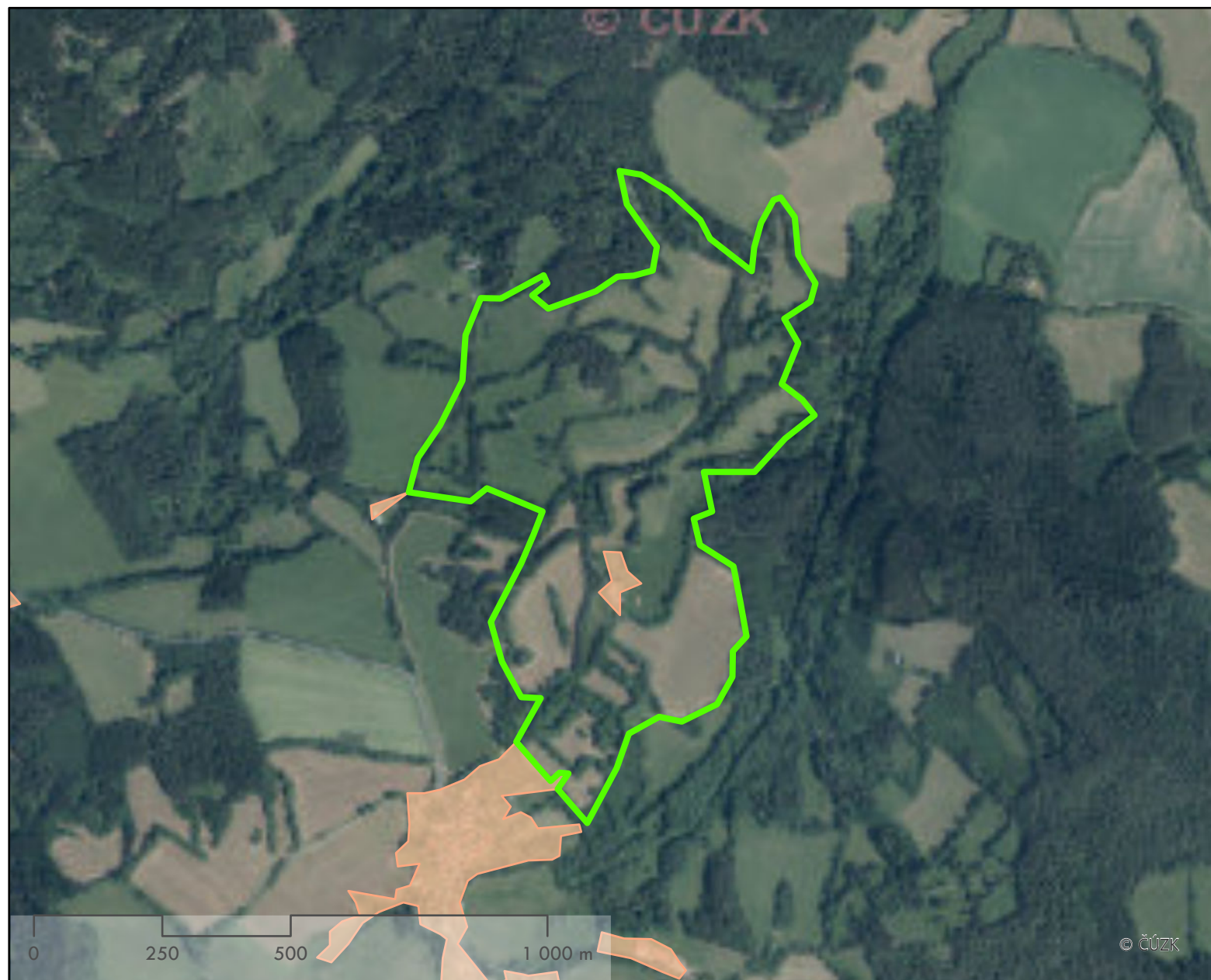


 Obvod plužiny

 Zastavěné území

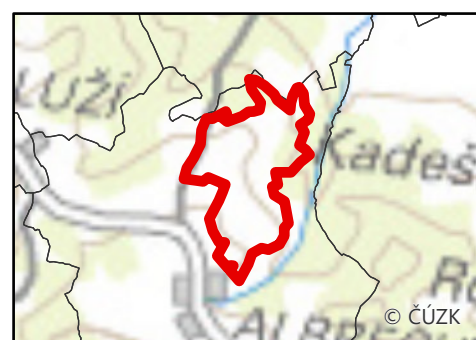
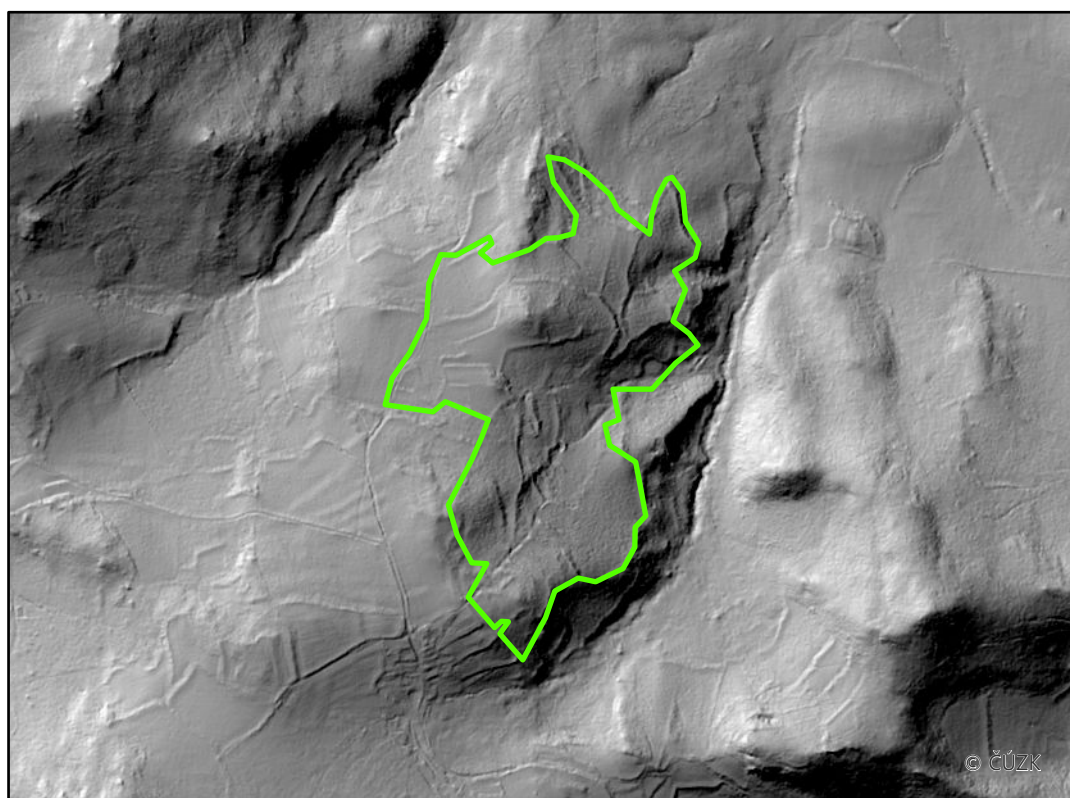


Katastrální území: Albrechtice u Sušice / Plzeňský kraj
Rozloha plužiny: 50,7 ha

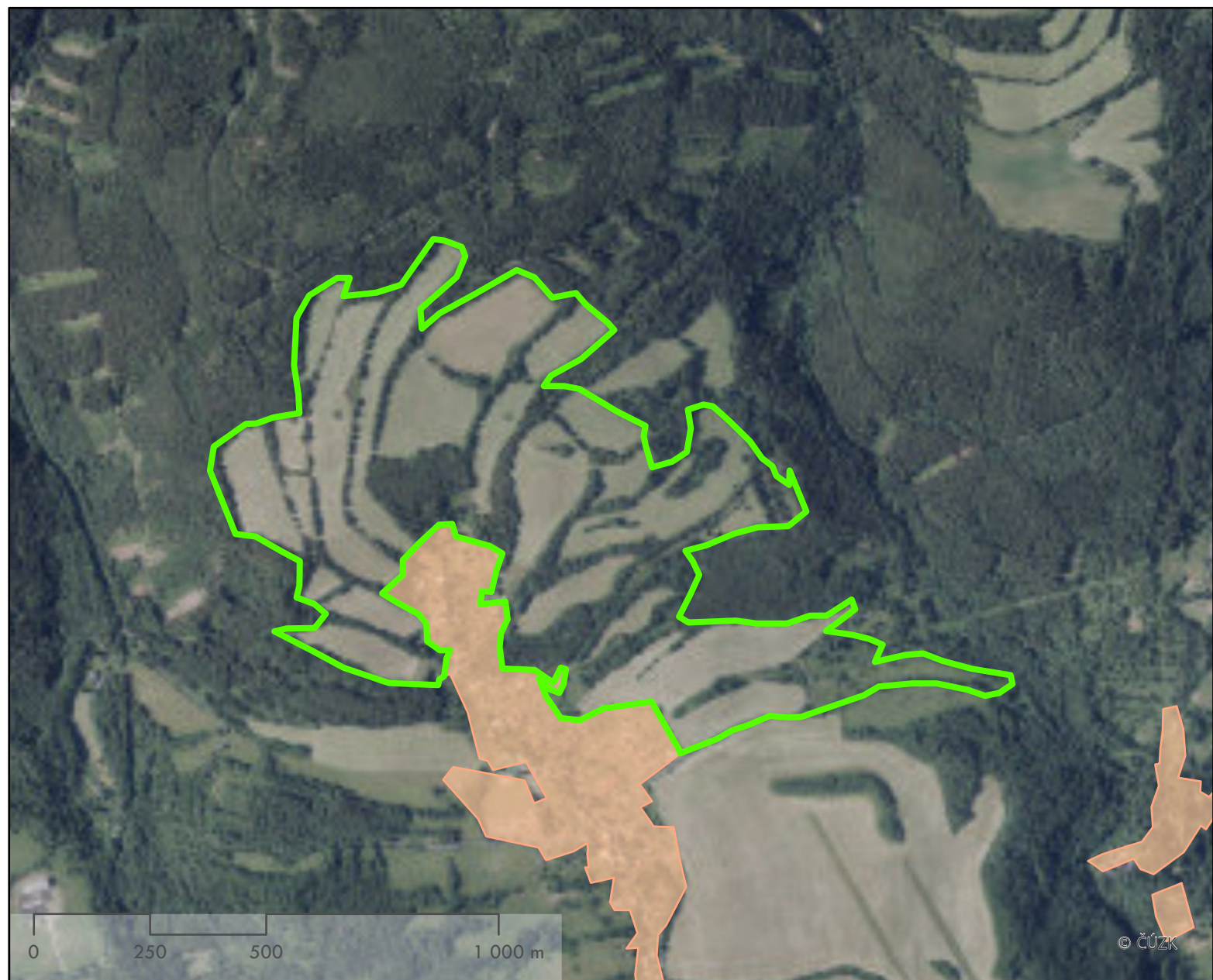





 Obvod plužiny

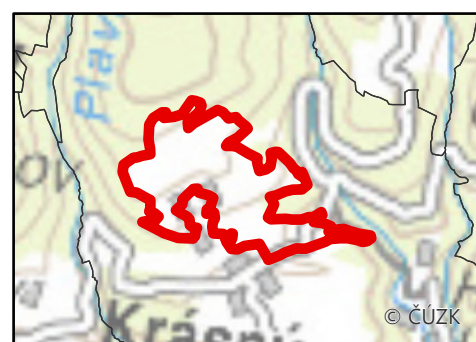
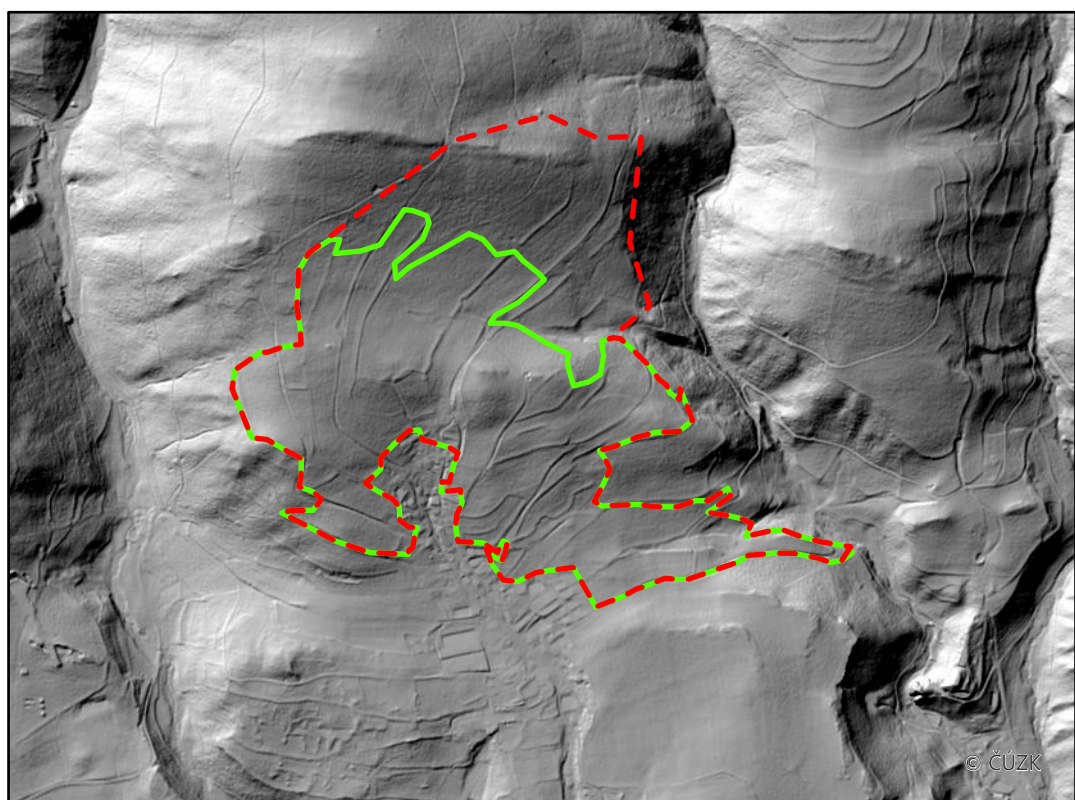
 Zastavěné území



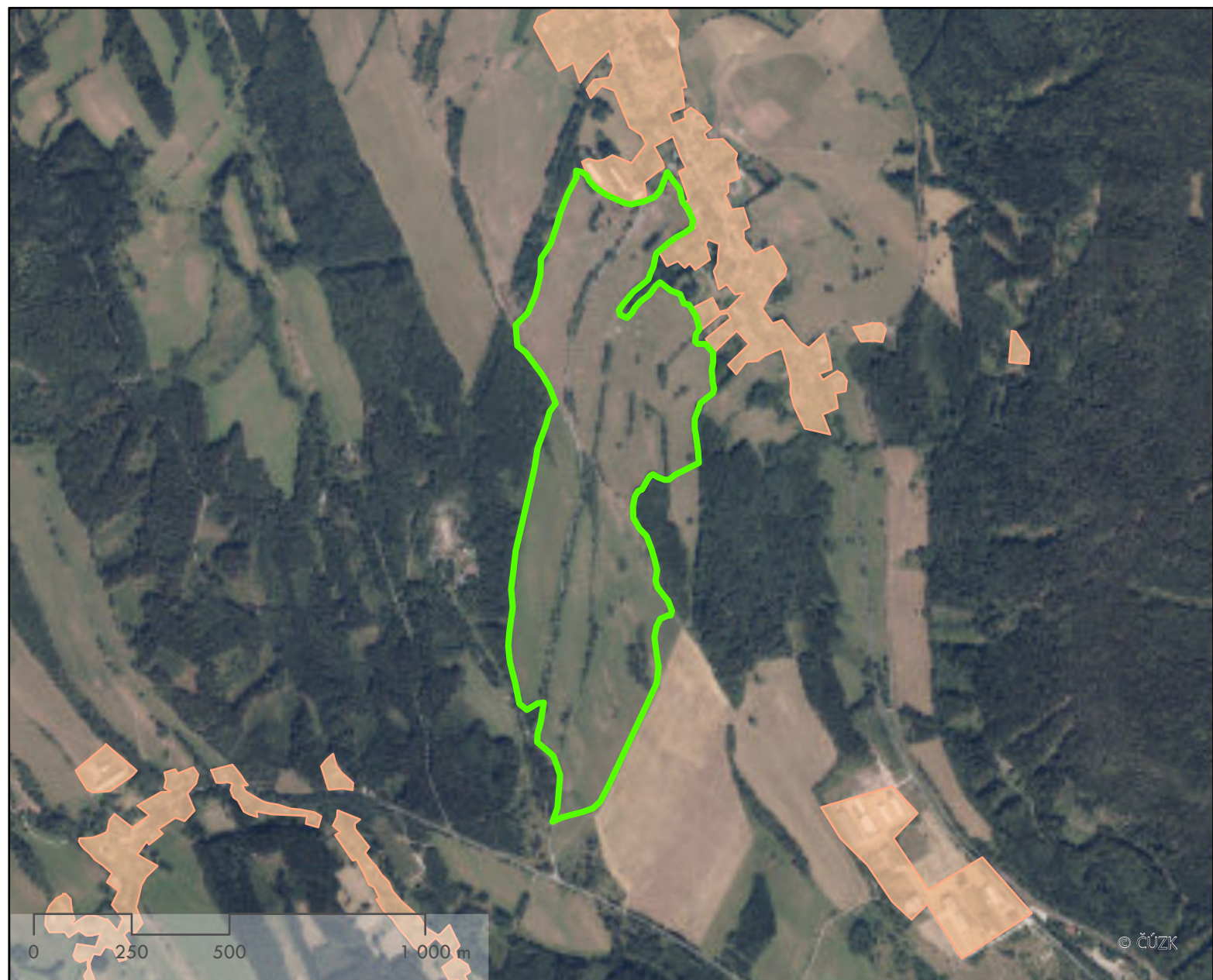
Katastrální území: Krásný Les / Karlovarský kraj
Rozloha plužiny: 79,7 ha



-  Obvod plužiny
-  Obvod plužiny (dle modelu terénu)
-  Zastavěné území

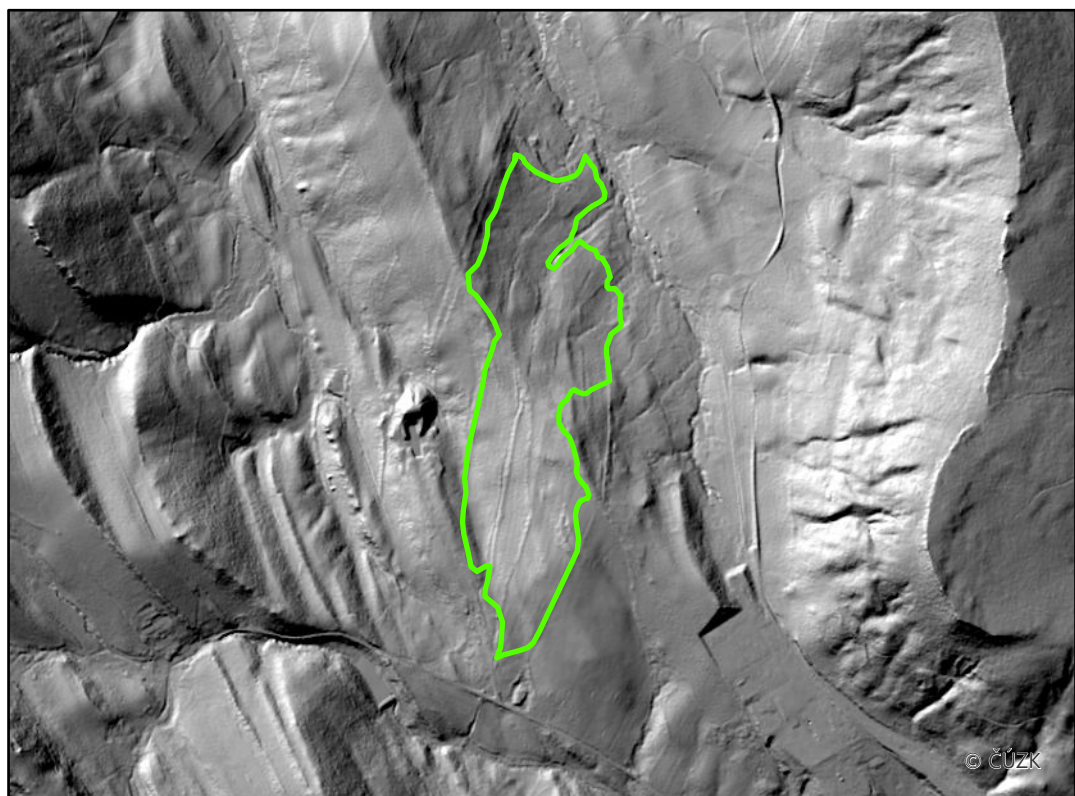
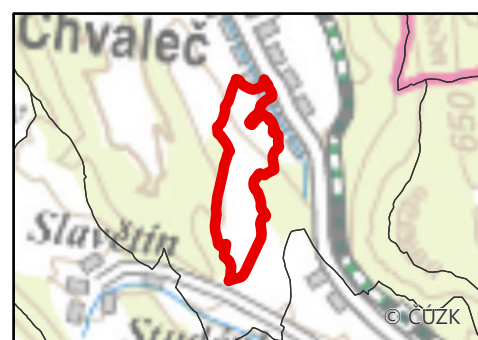


Katastrální území: Chvaleč / Královéhradecký kraj
Rozloha plužiny: 52,6 ha



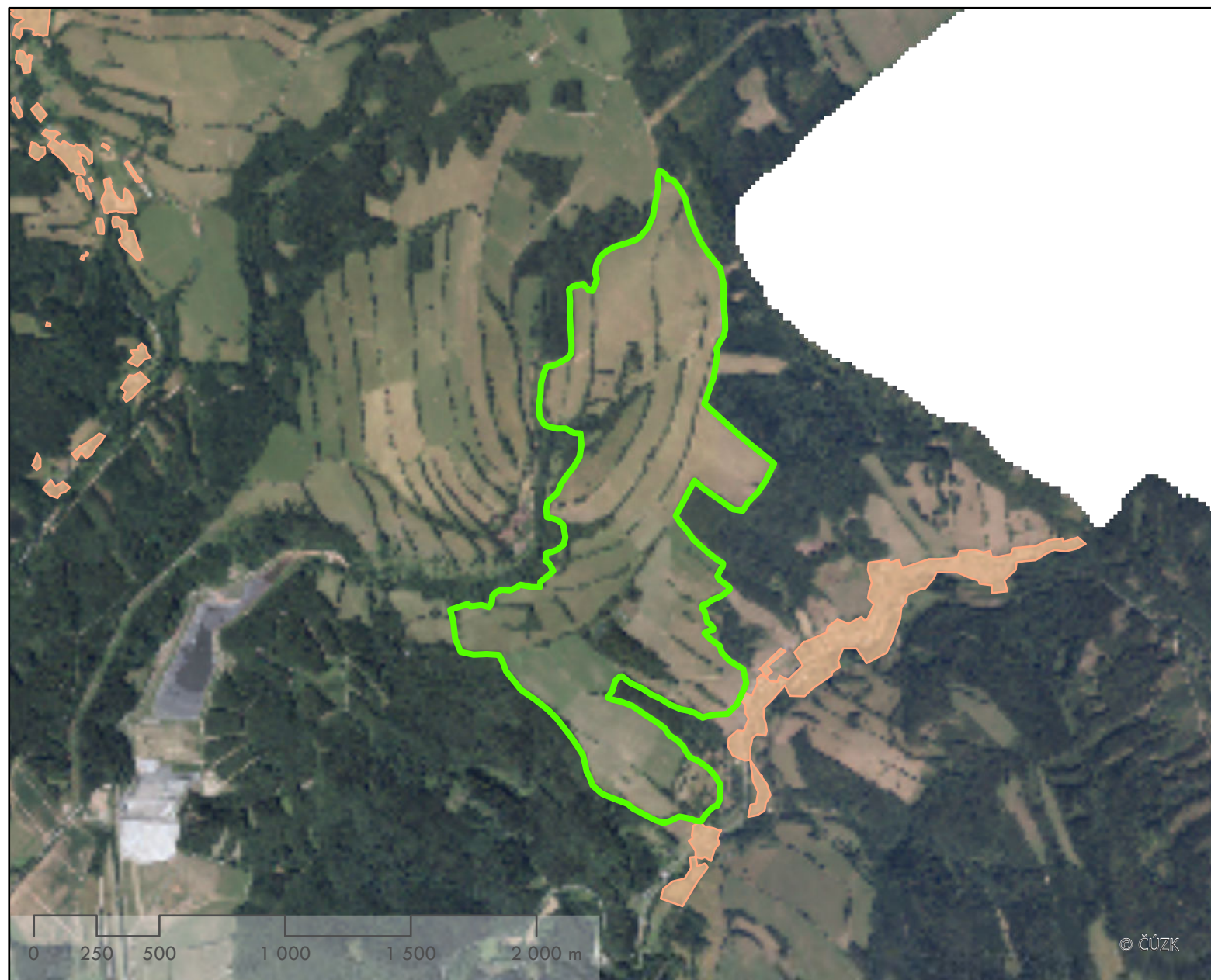
 Obvod plužiny

 Zastavěné území



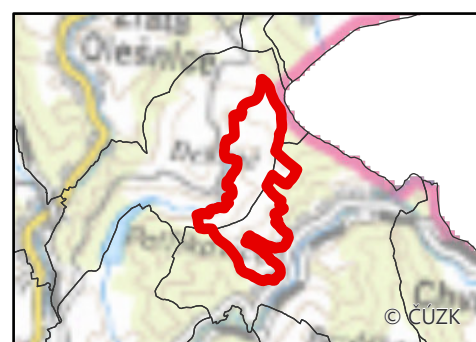
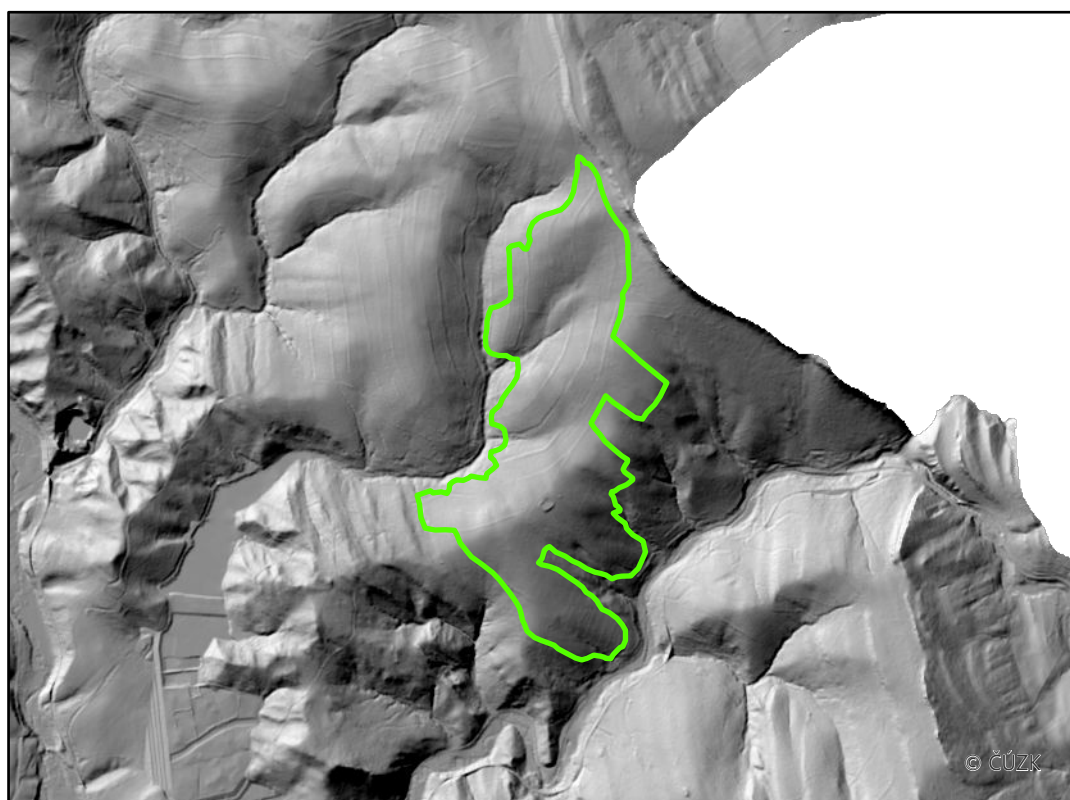
Katastrální území: Petříkovice u Trutnova / Královéhradecký kraj

Rozloha plužiny: 151,6 ha






 Obvod plužiny

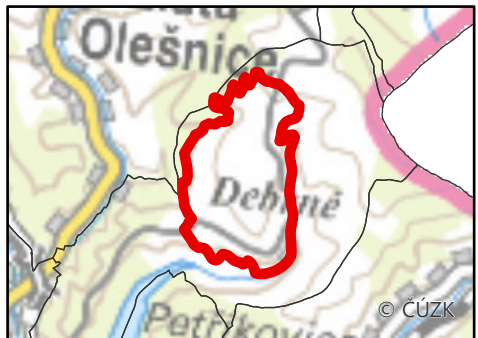
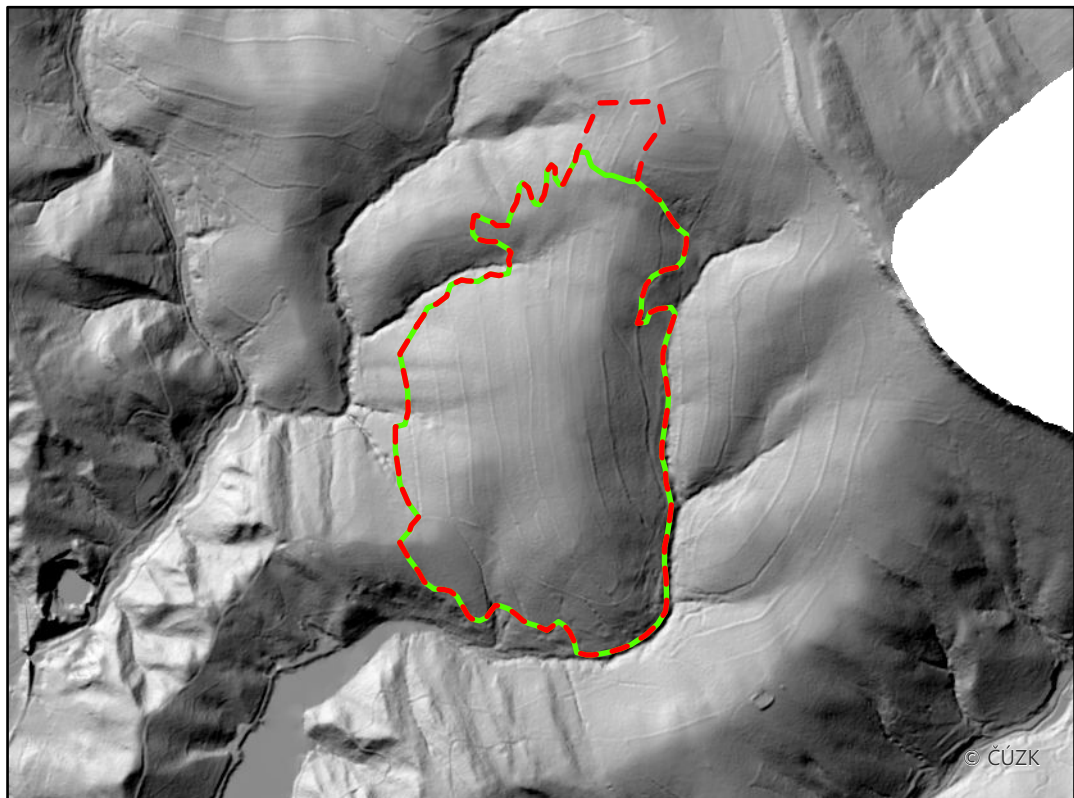
 Zastavěné území



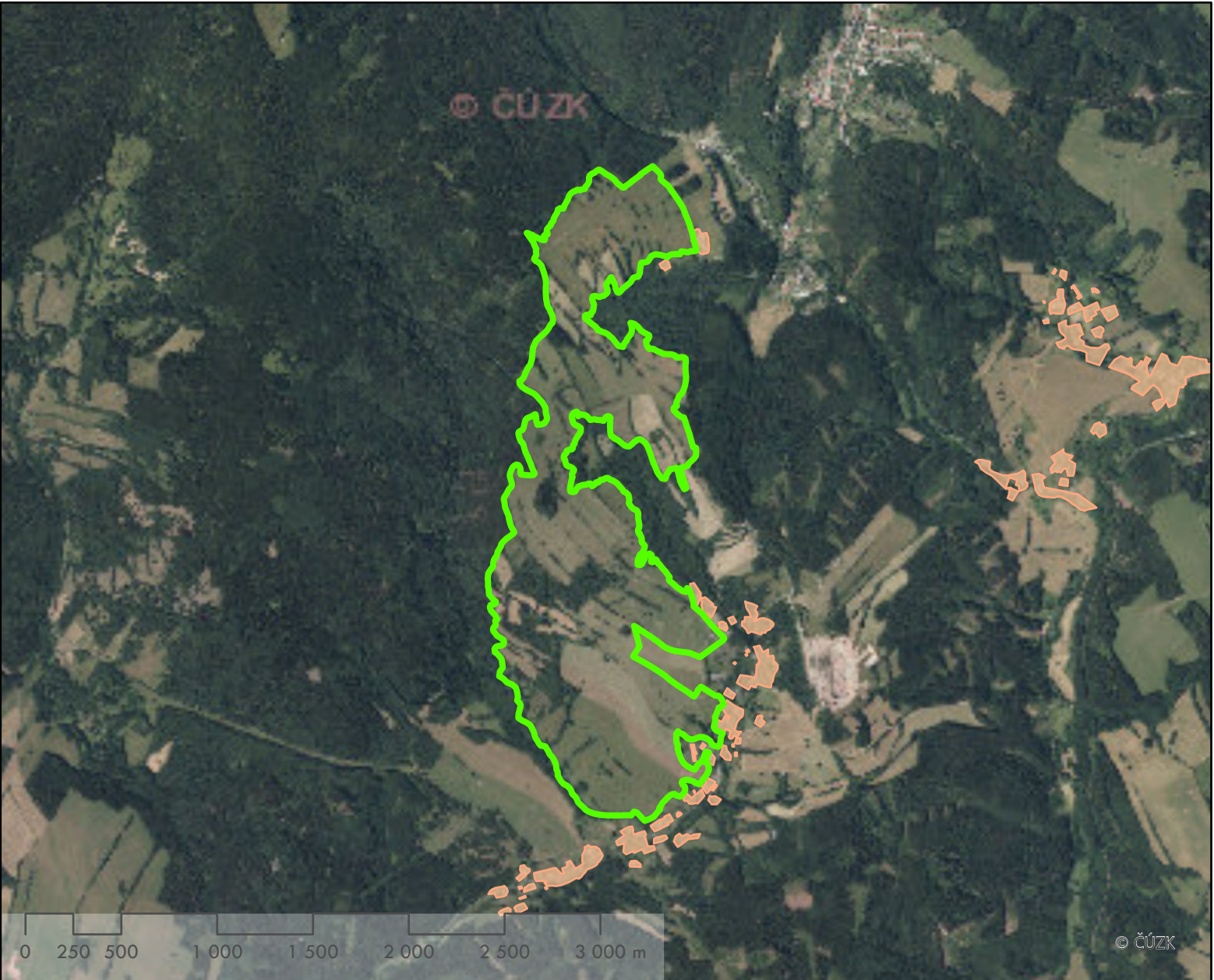
Katastrální území: Debrné / Královéhradecký kraj
Rozloha plužiny: 127 ha






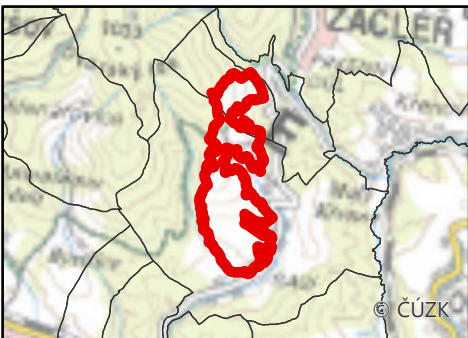
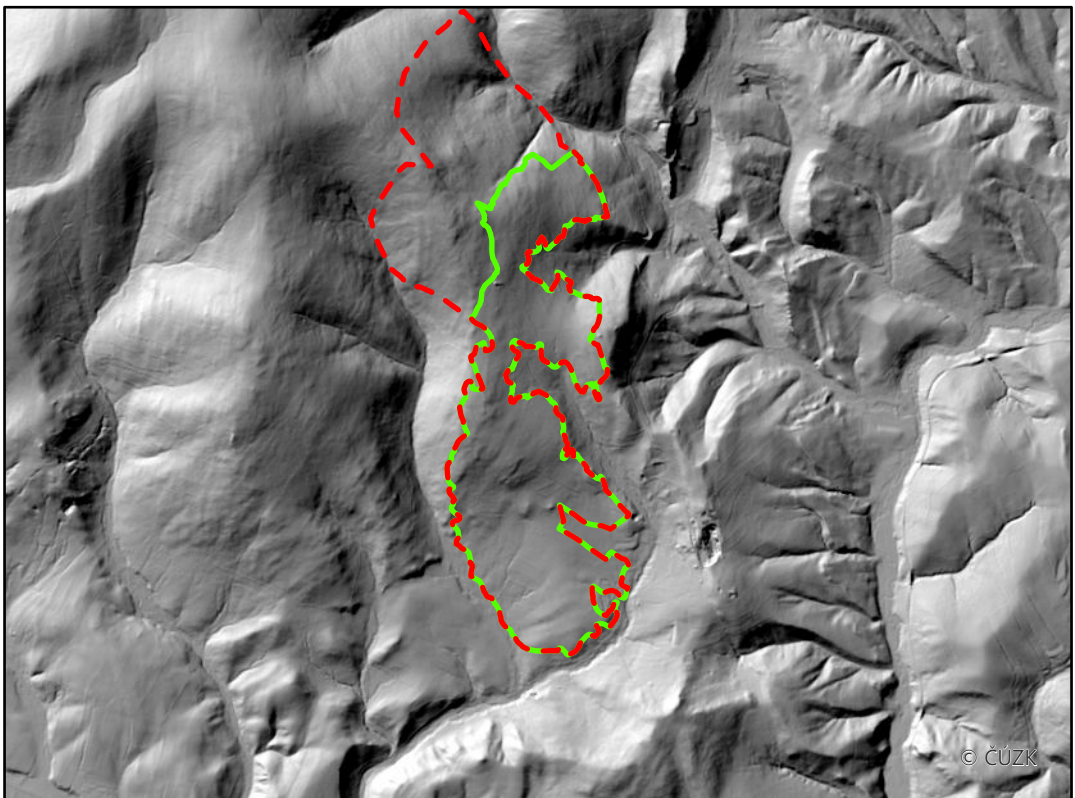
-  Obvod plužiny
-  Obvod plužiny (dle modelu terénu)
-  Zastavěné území

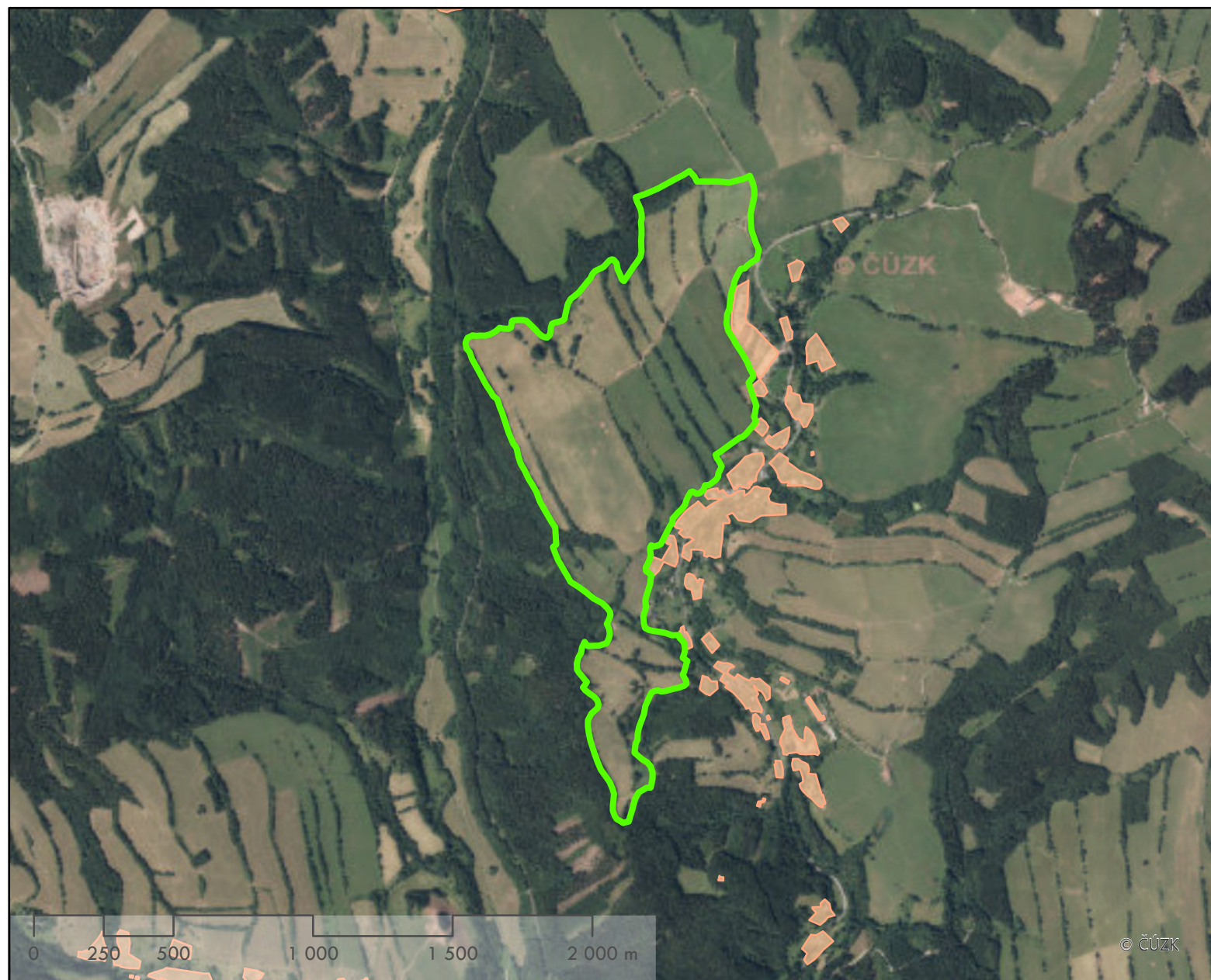


Katastrální území: Babí / Královéhradecký kraj
Rozloha plužiny: 232,9 ha



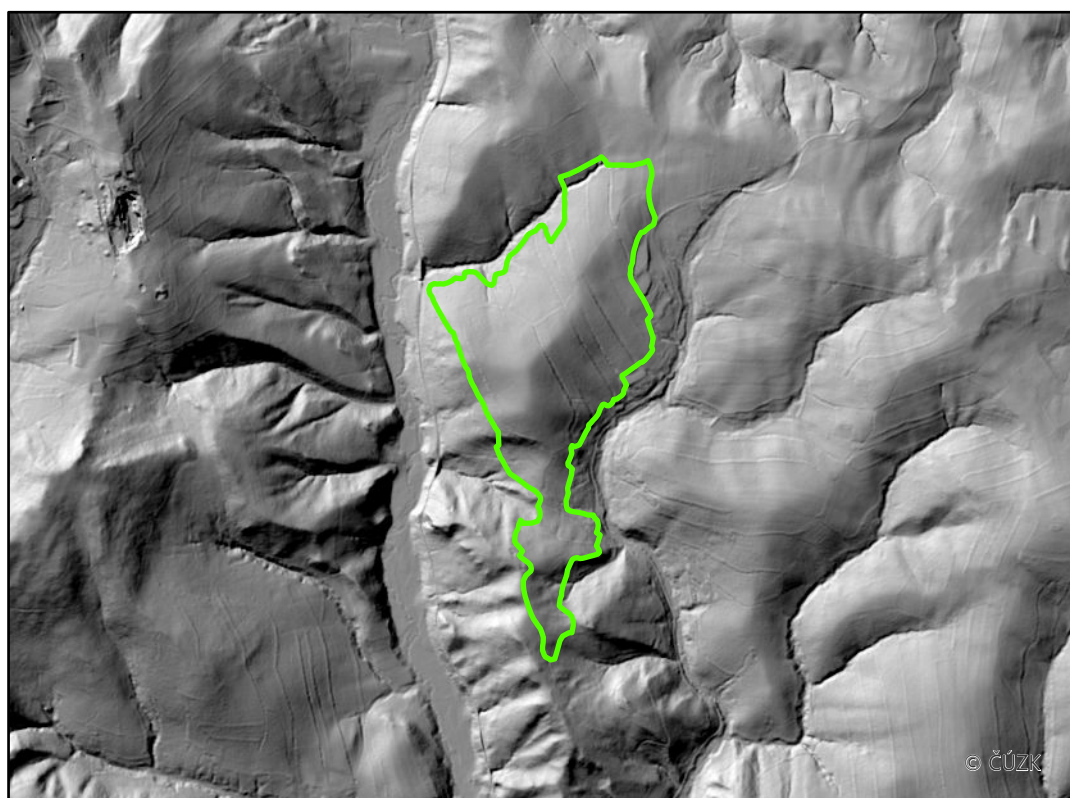
-  Obvod plužiny
-  Obvod plužiny (dle modelu terénu)
-  Zastavěné území

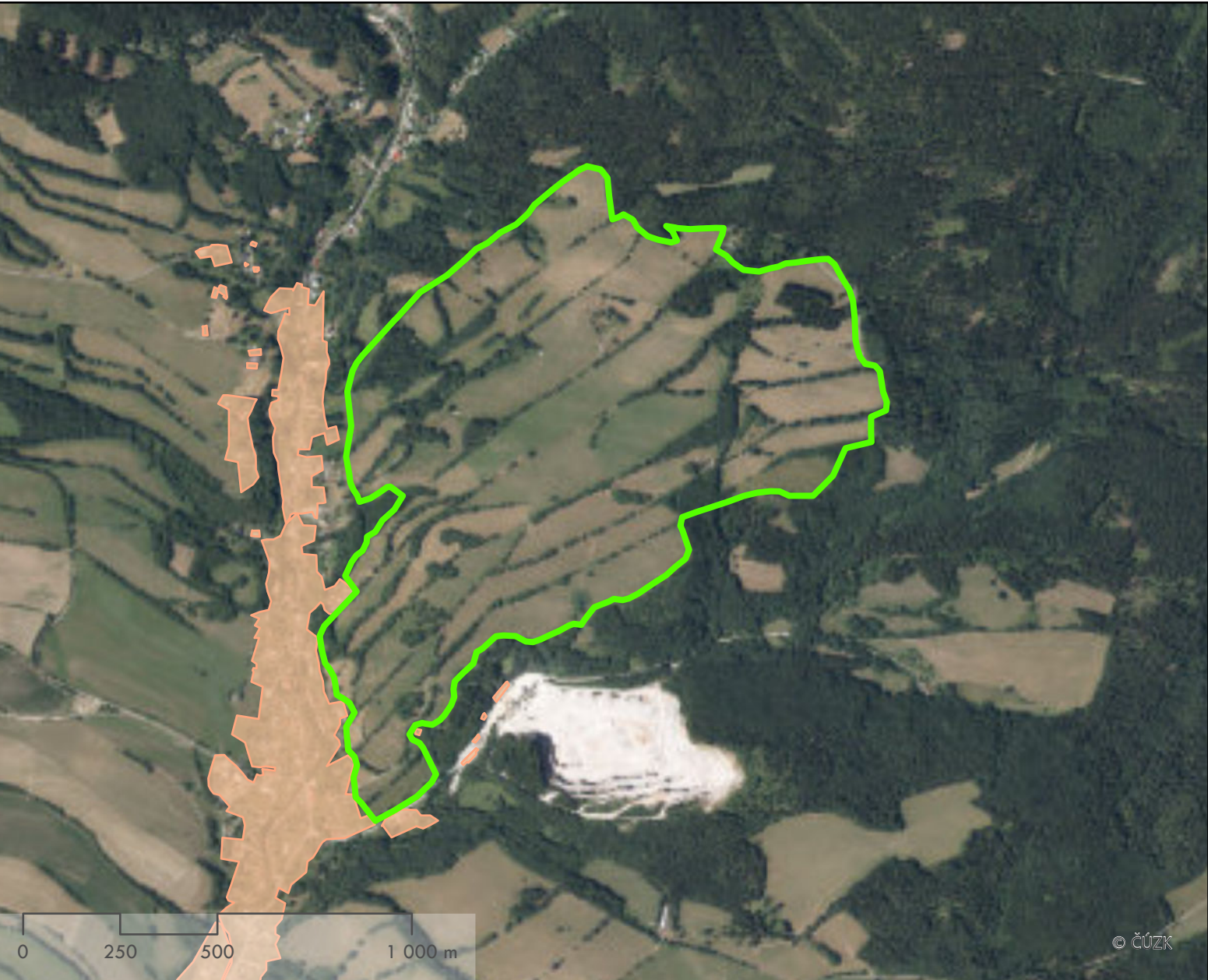







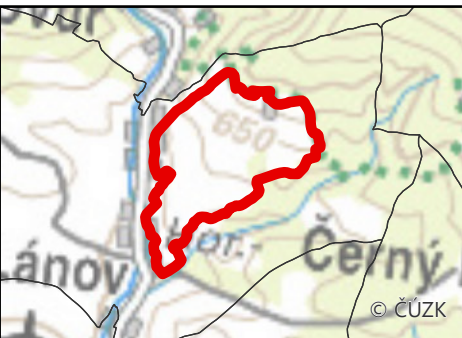
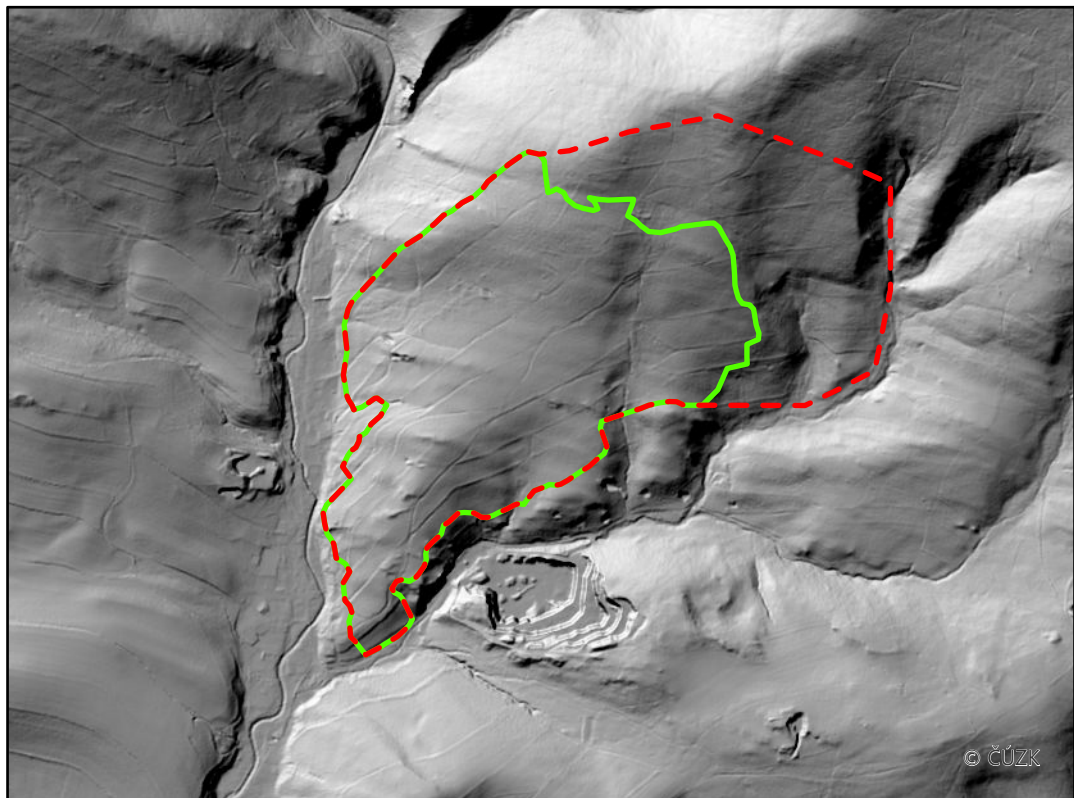
 Obvod plužiny

 Zastavěné území

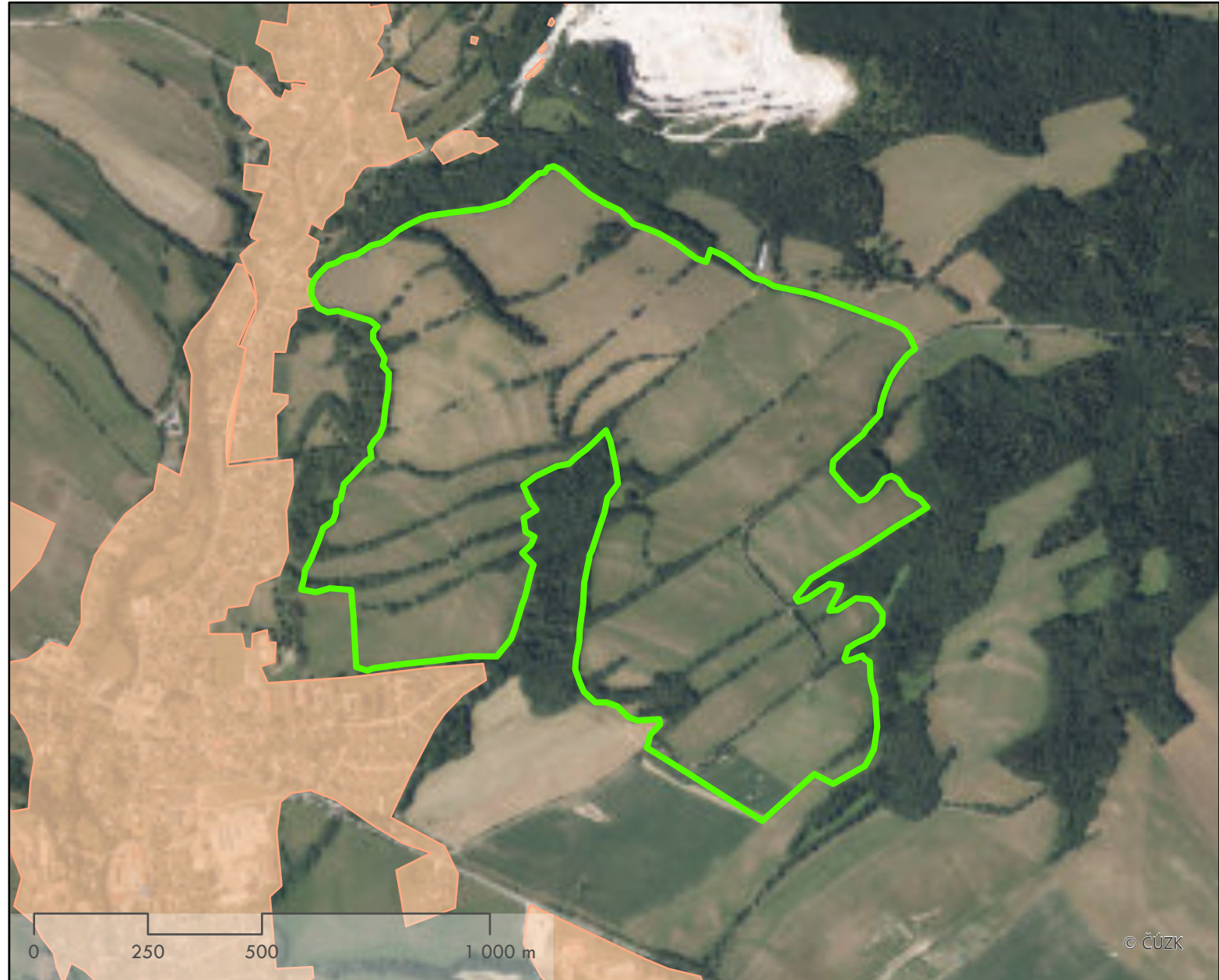







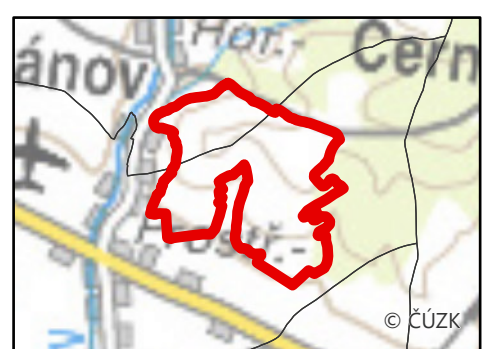
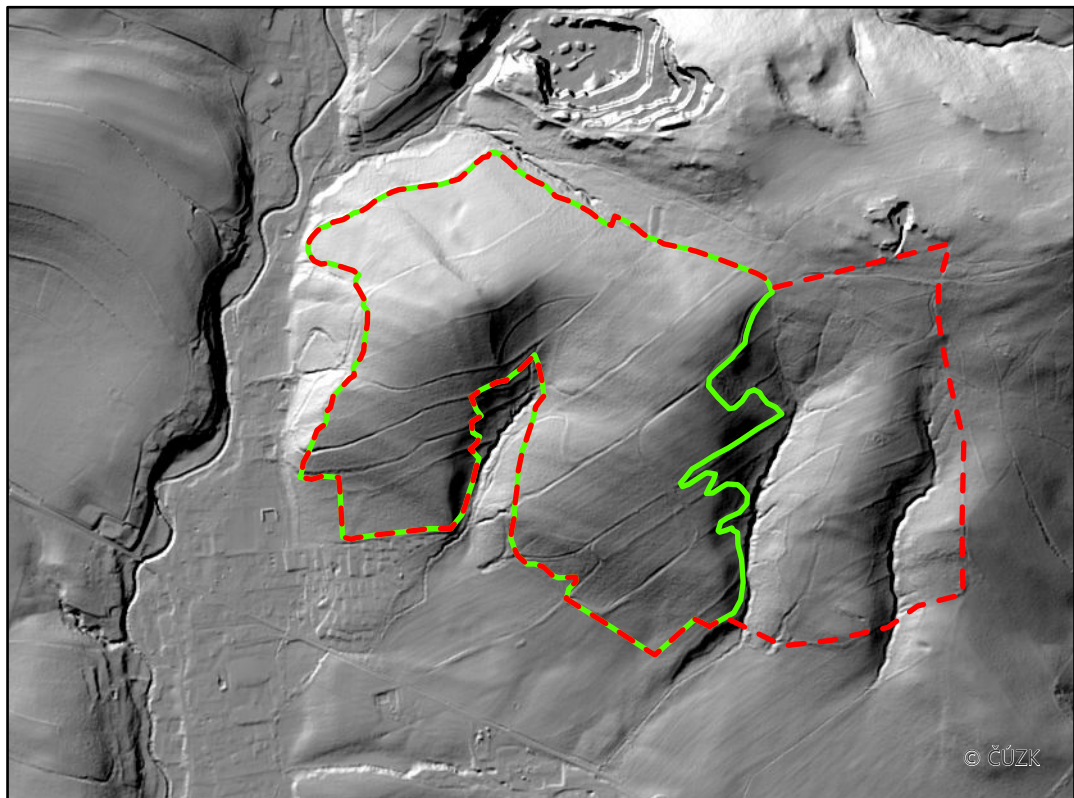
-  Obvod plužiny
-  Obvod plužiny (dle modelu terénu)
-  Zastavěné území



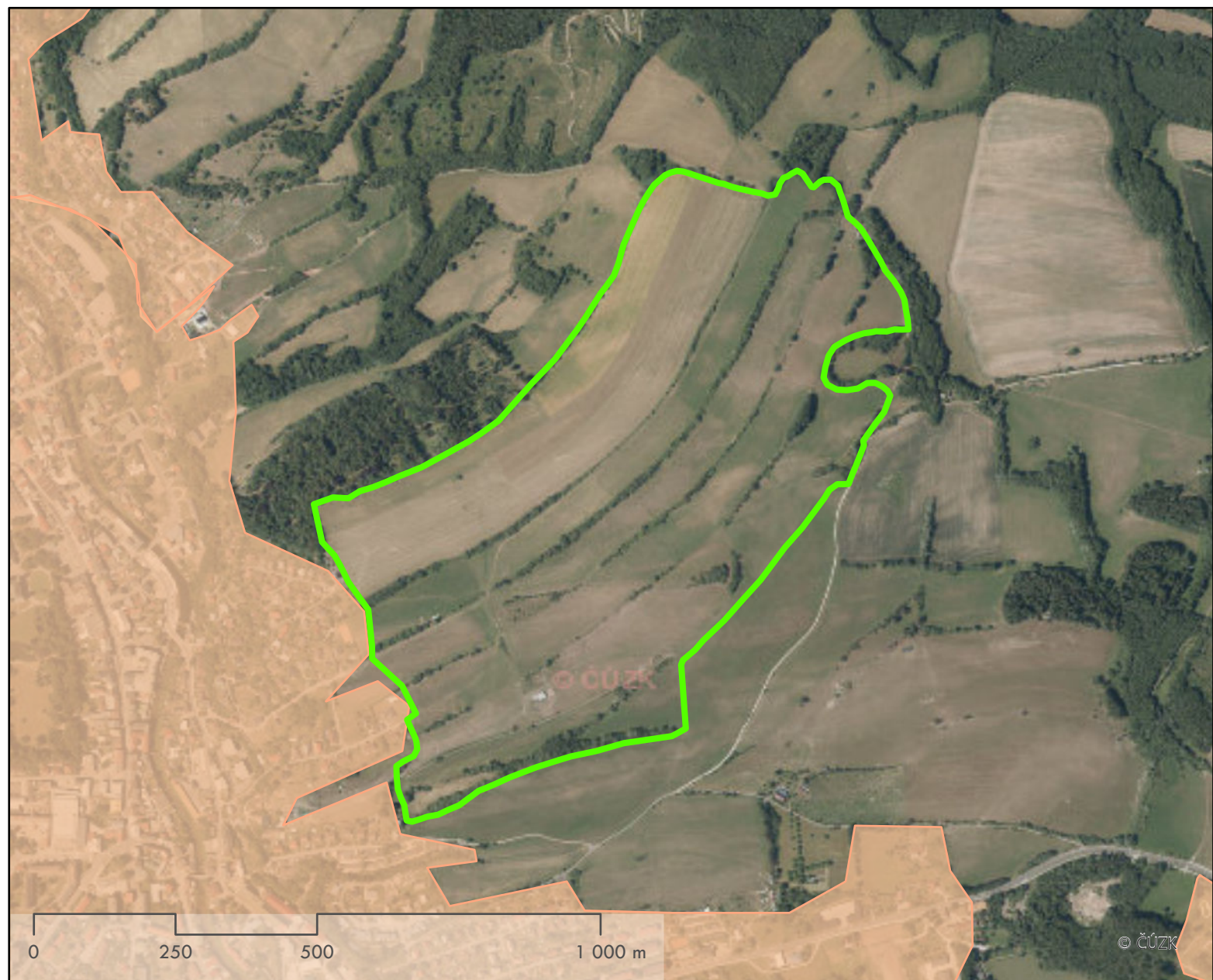
Katastrální území: Prostřední Lánov / Královéhradecký kraj
Rozloha plužiny: 114,3 ha



-  Obvod plužiny
-  Obvod plužiny (dle modelu terénu)
-  Zastavěné území

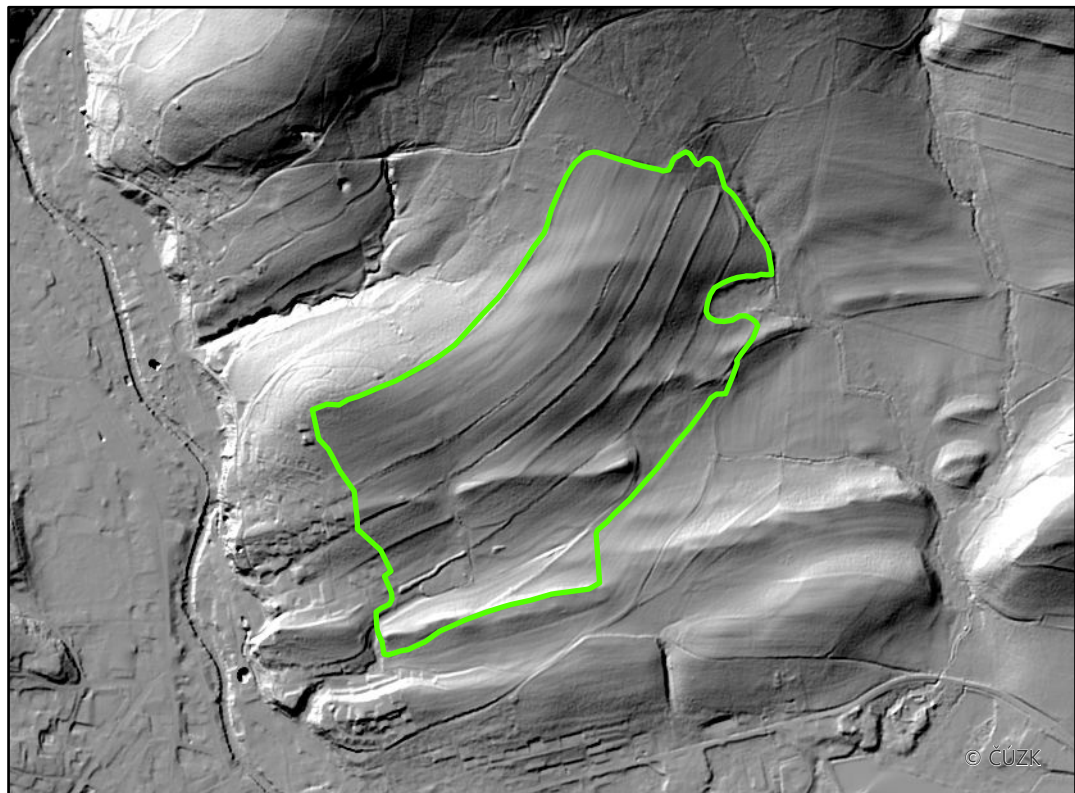
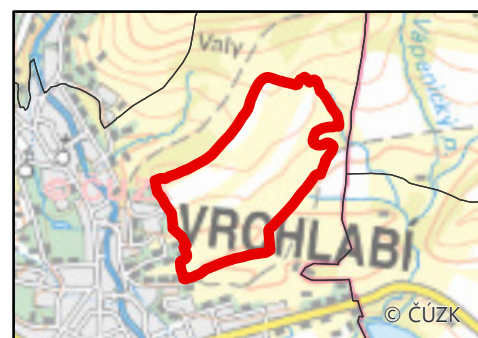


Katastrální území: Vrchlabí / Královéhradecký kraj
Rozloha plužiny: 61,5 ha



 Obvod plužiny

 Zastavěné území

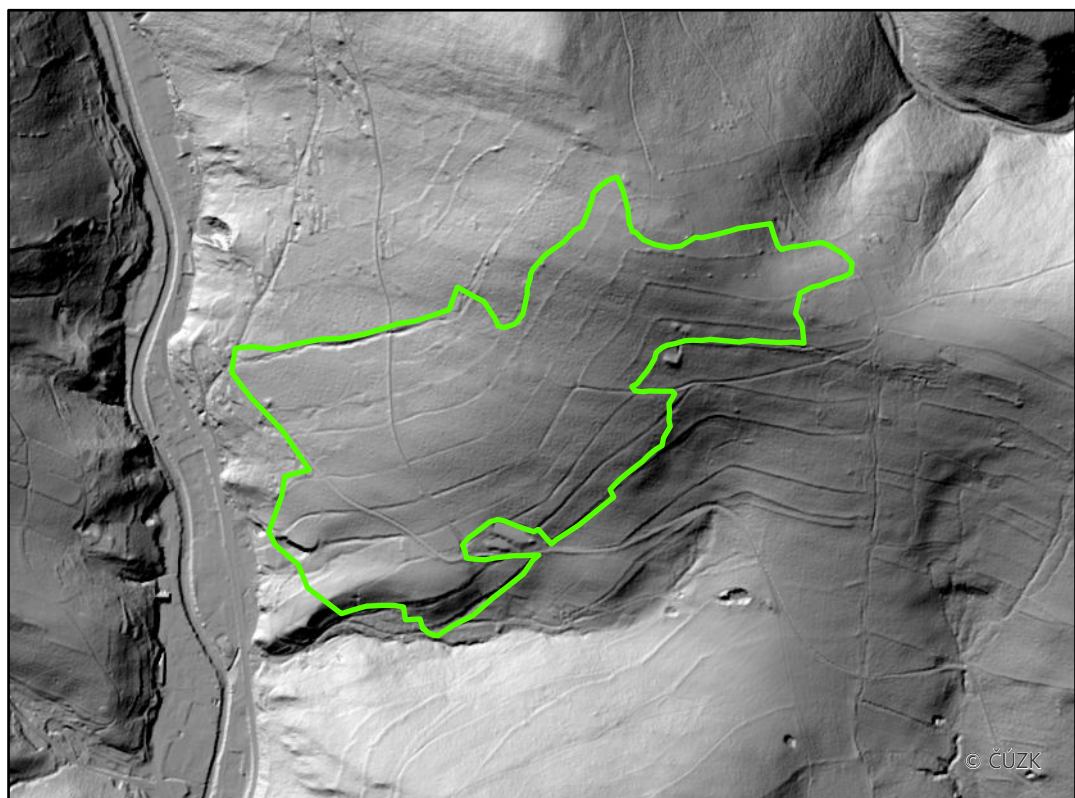
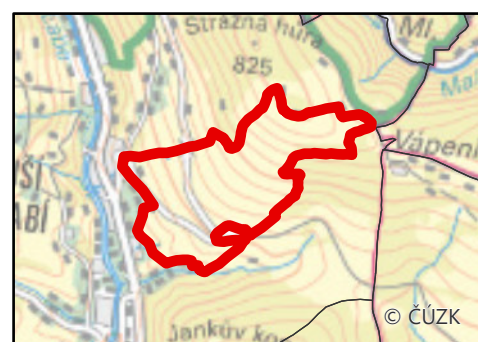


Katastrální území: Hořejší Vrchlabí / Královéhradecký kraj
Rozloha plužiny: 65,6 ha






 Obvod plužiny

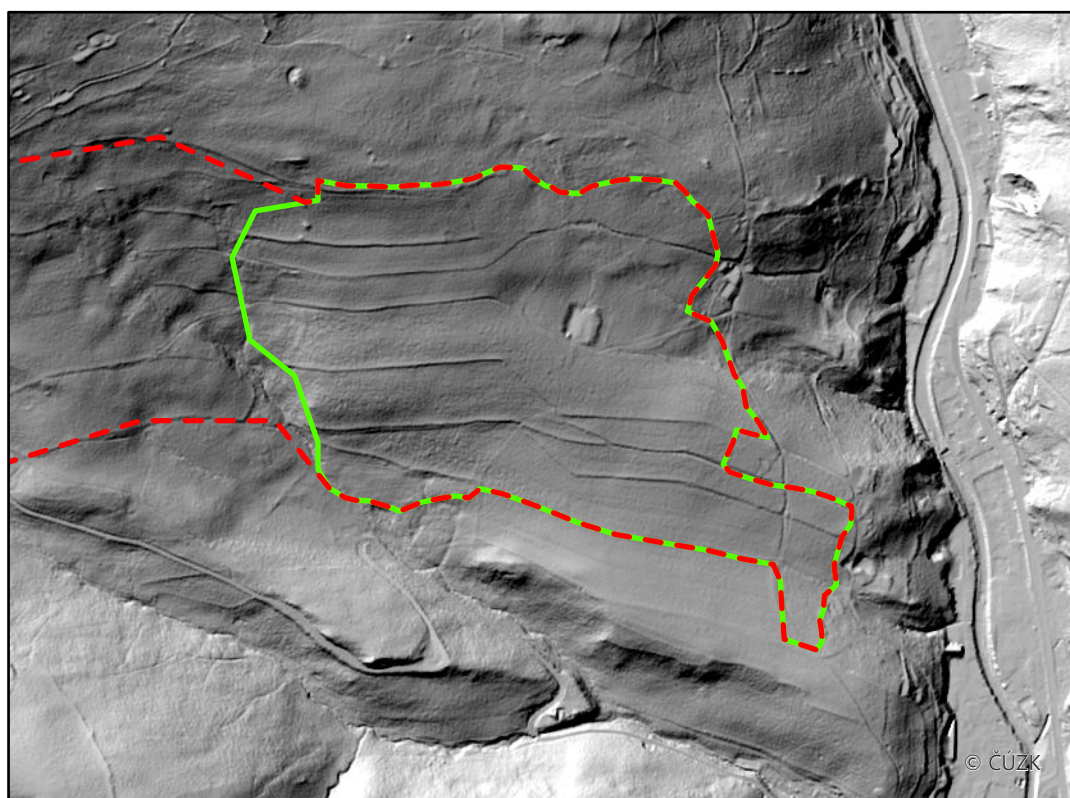
 Zastavěné území



Katastrální území: Hořejší Vrchlabí / Královéhradecký kraj
Rozloha plužiny: 54,2 ha



-  Obvod plužiny
-  Obvod plužiny (dle modelu terénu)
-  Zastavěné území

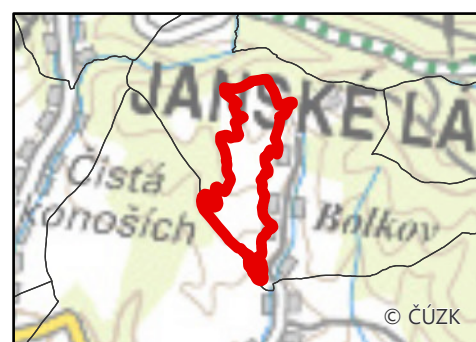
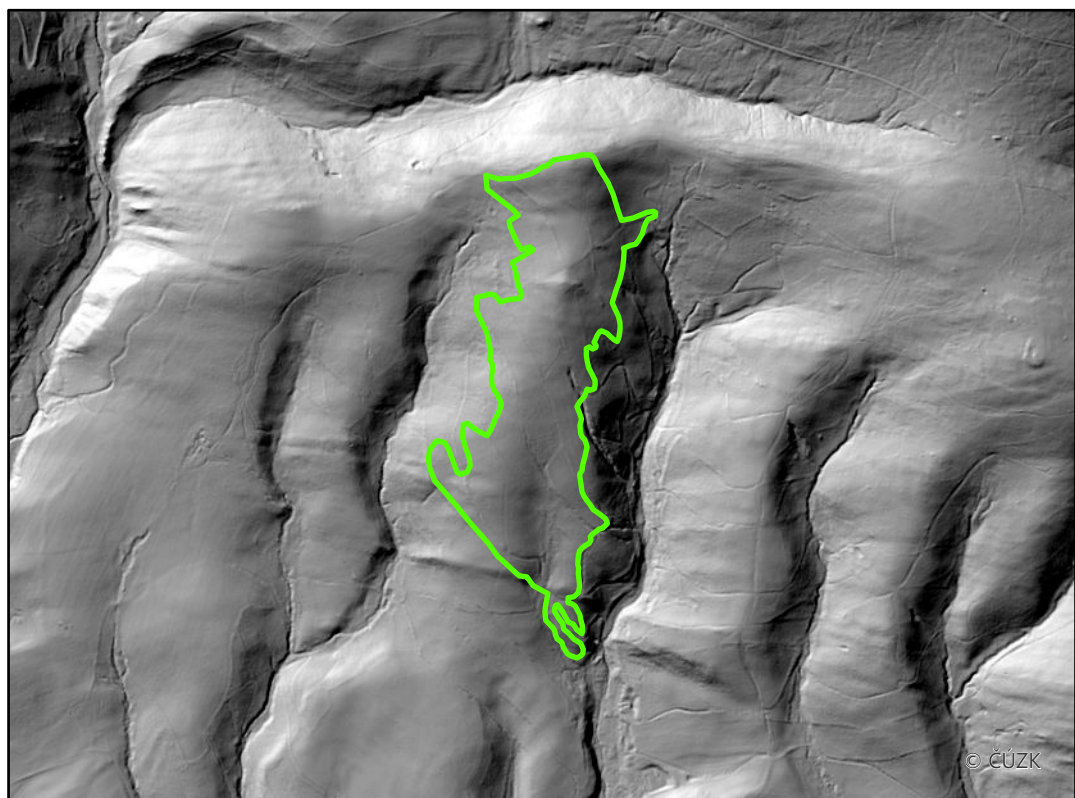


Katastrální území: Bolkov / Královéhradecký kraj
Rozloha plužiny: 58 ha

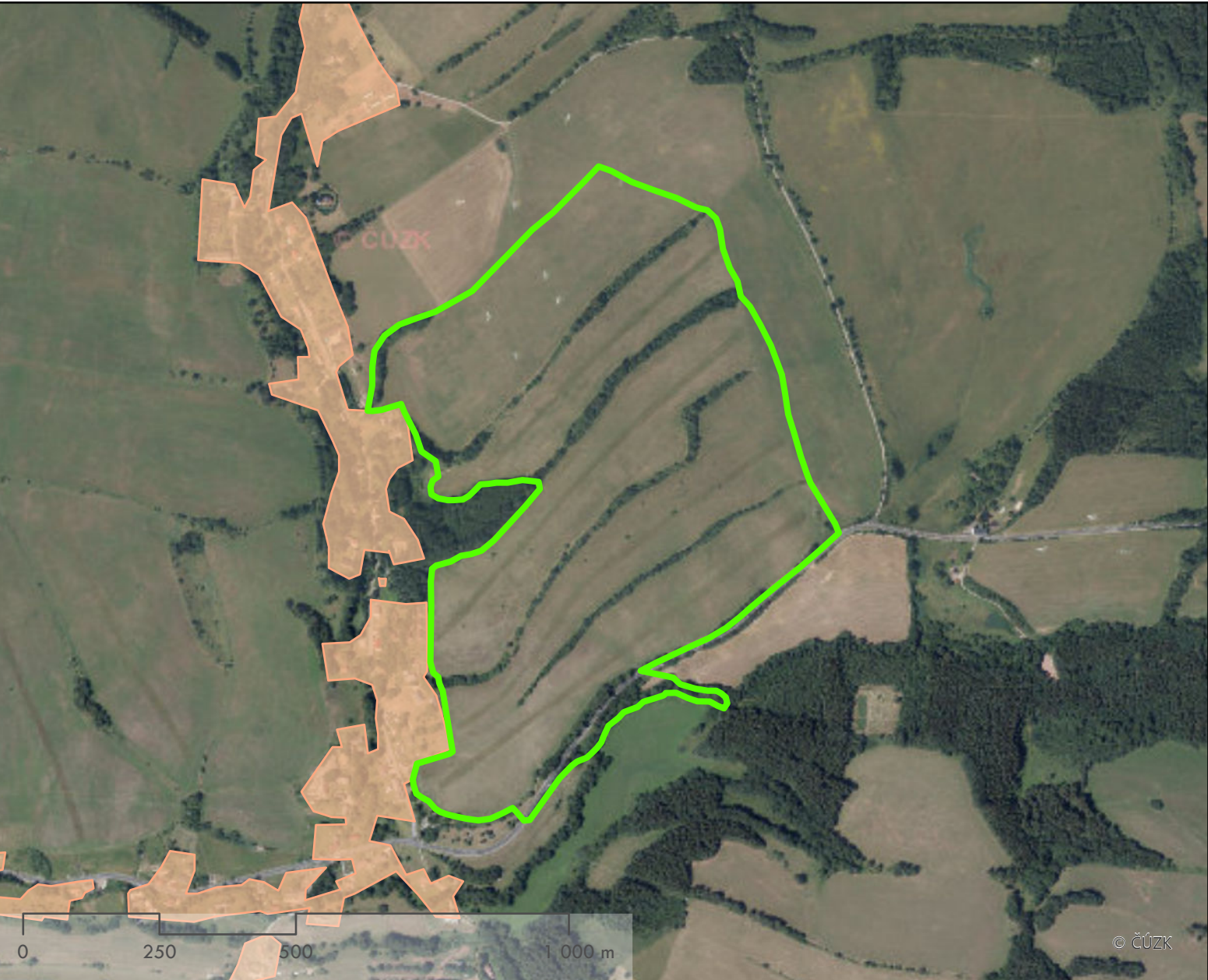


 Obvod plužiny

 Zastavěné území

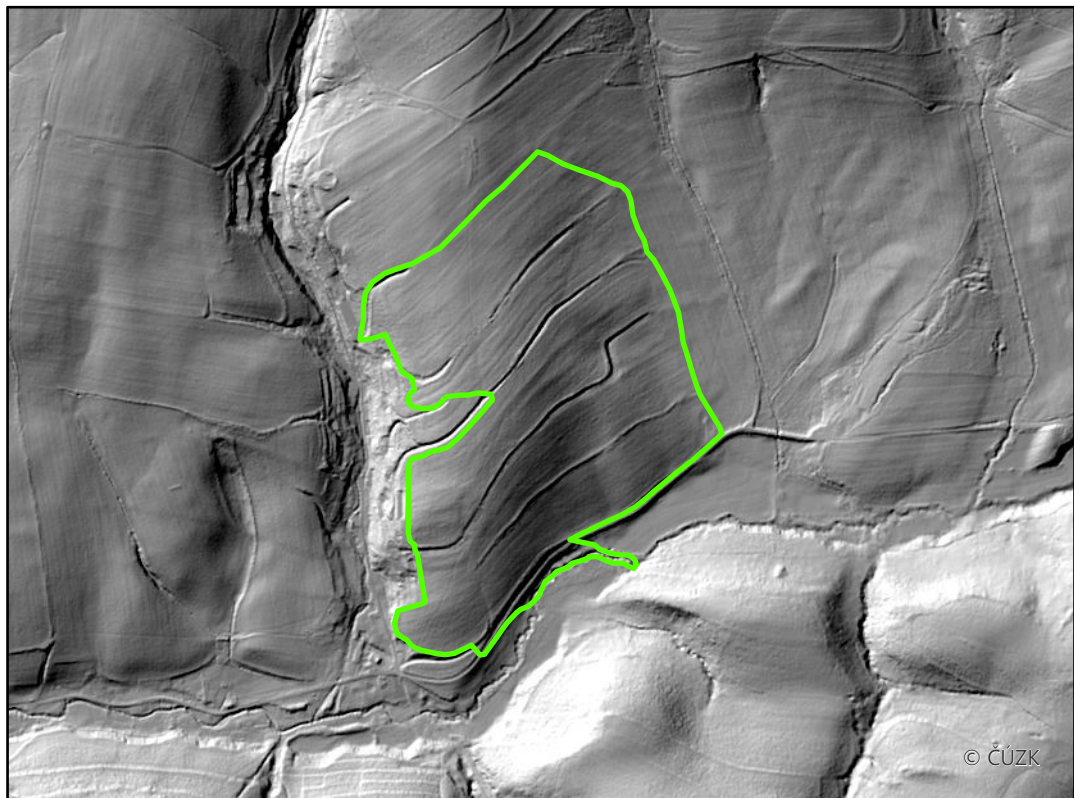


Katastrální území: Javorník v Krkonoších / Královéhradecký kraj
Rozloha plužiny: 58,9 ha

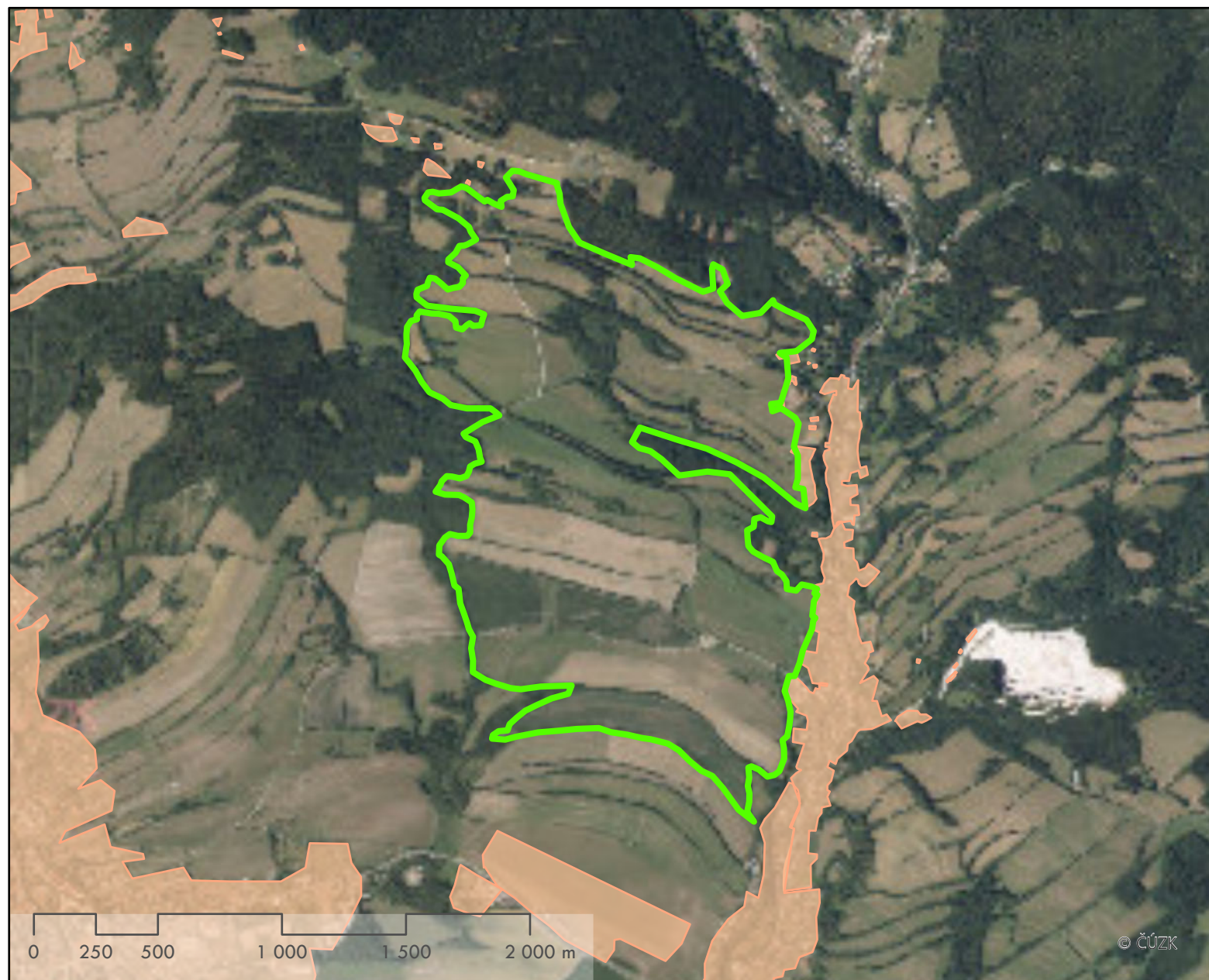





 Obvod plužiny

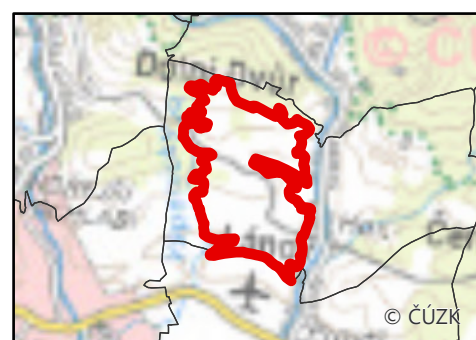
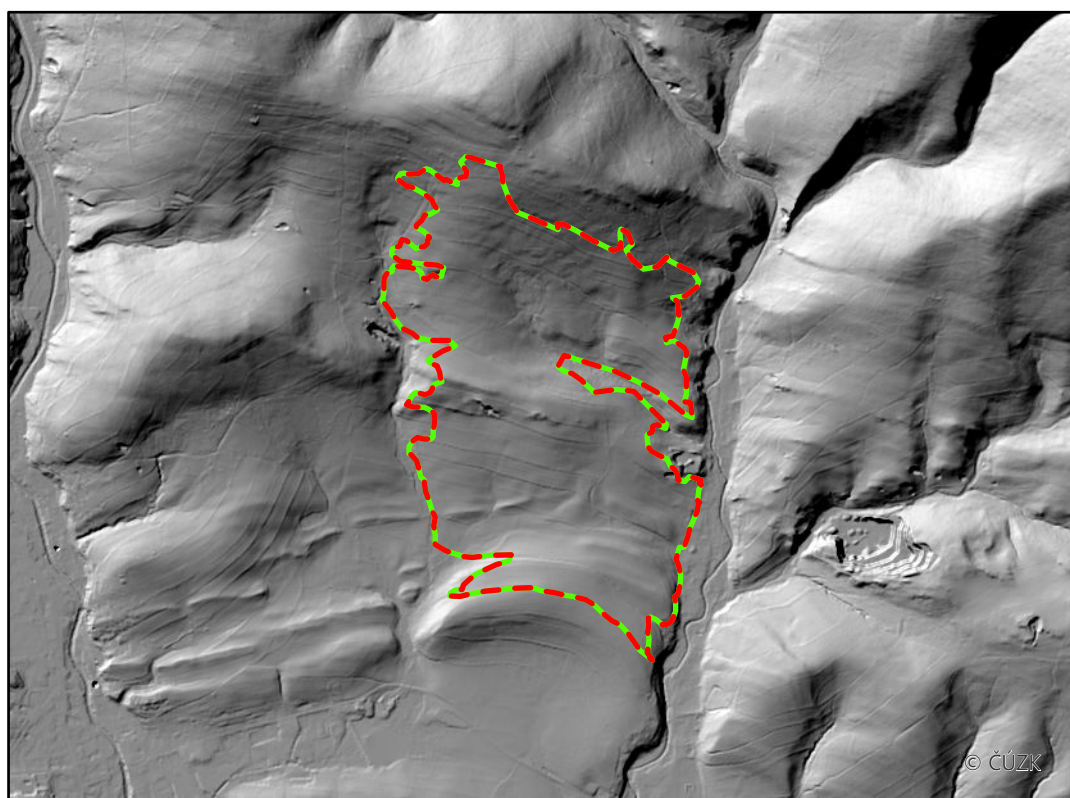
 Zastavěné území



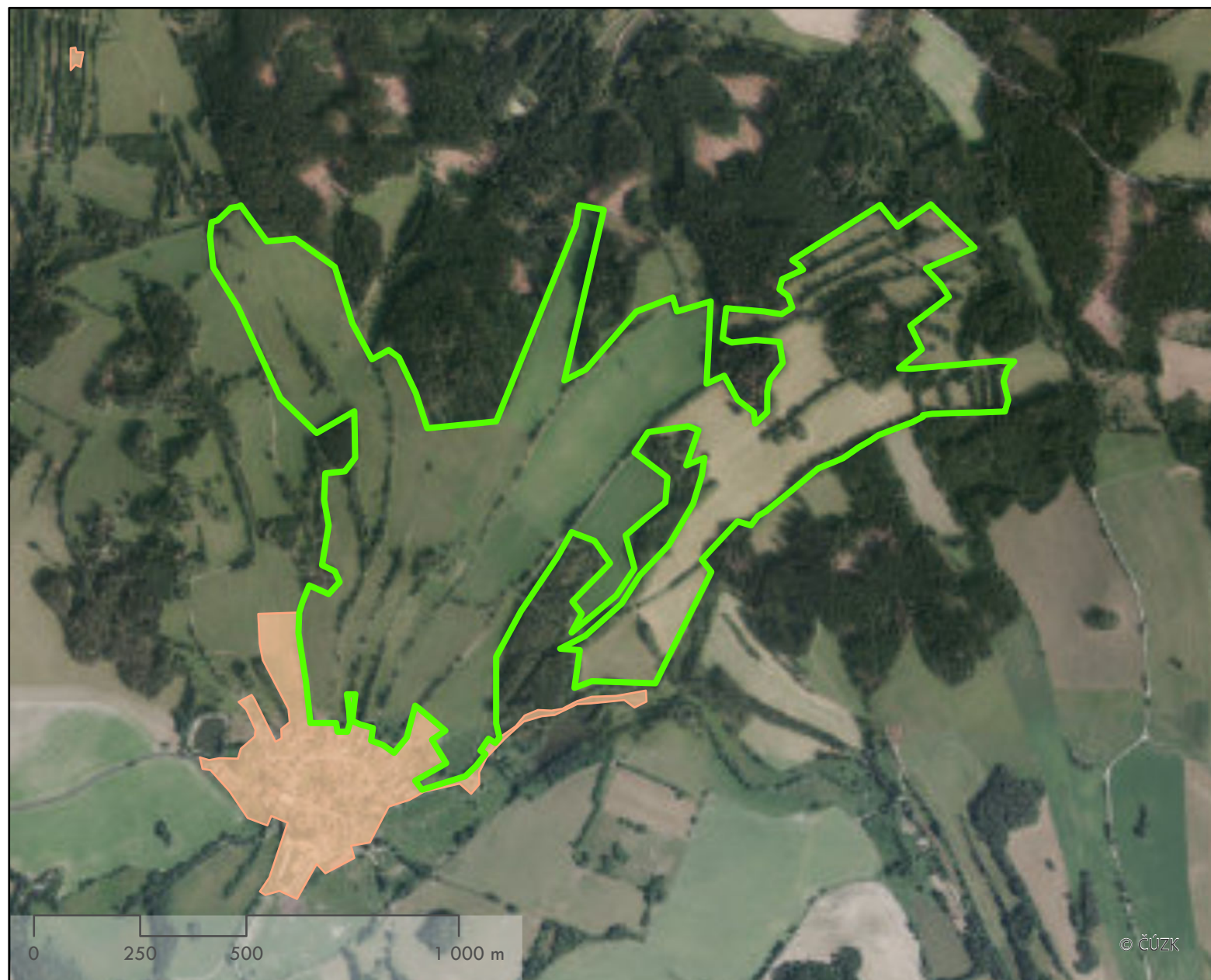
Katastrální území: Horní Lánov / Královéhradecký kraj
Rozloha plužiny: 262,9 ha



-  Obvod plužiny
-  Obvod plužiny (dle modelu terénu)
-  Zastavěné území

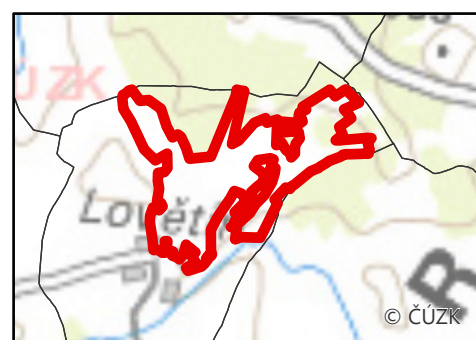
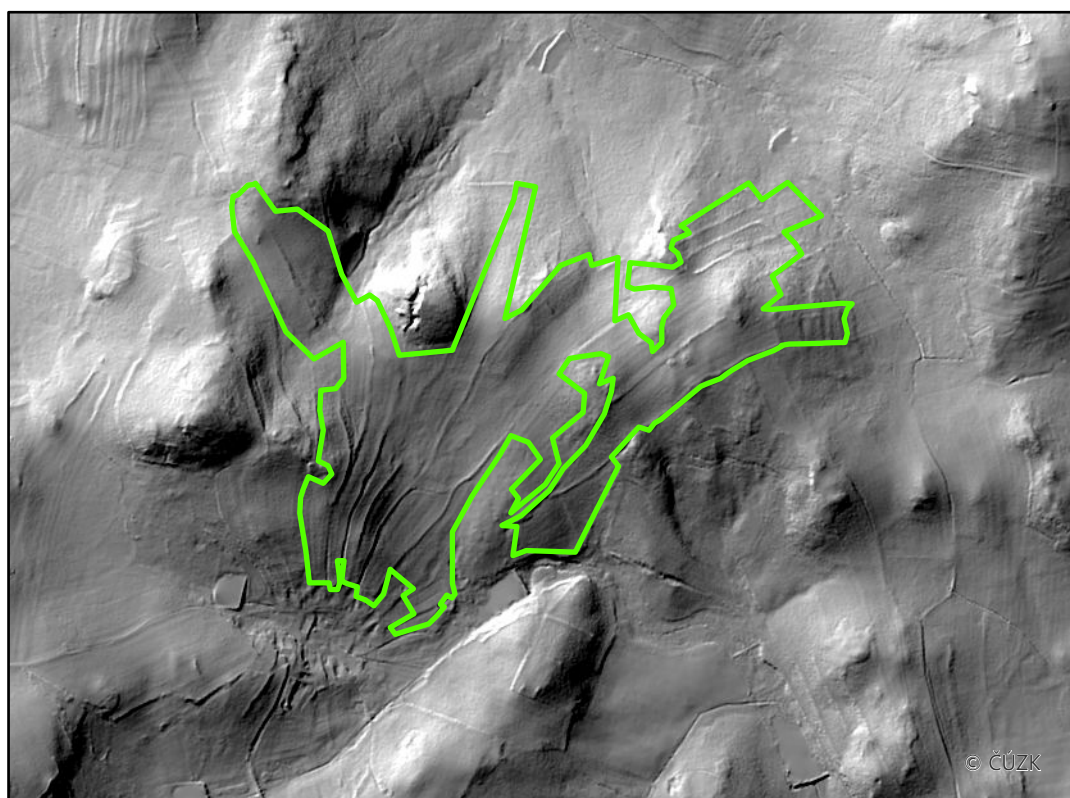


Katastrální území: Lovětín u Třešti / Kraj Vysočina
Rozloha plužiny: 103,6 ha



 Obvod plužiny

 Zastavěné území

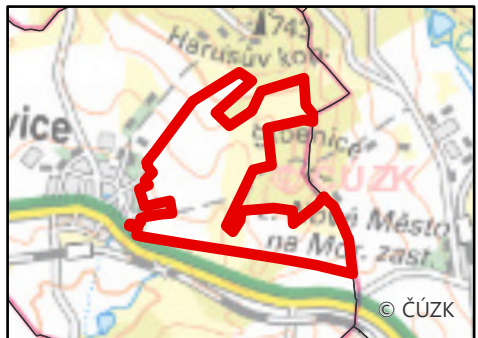
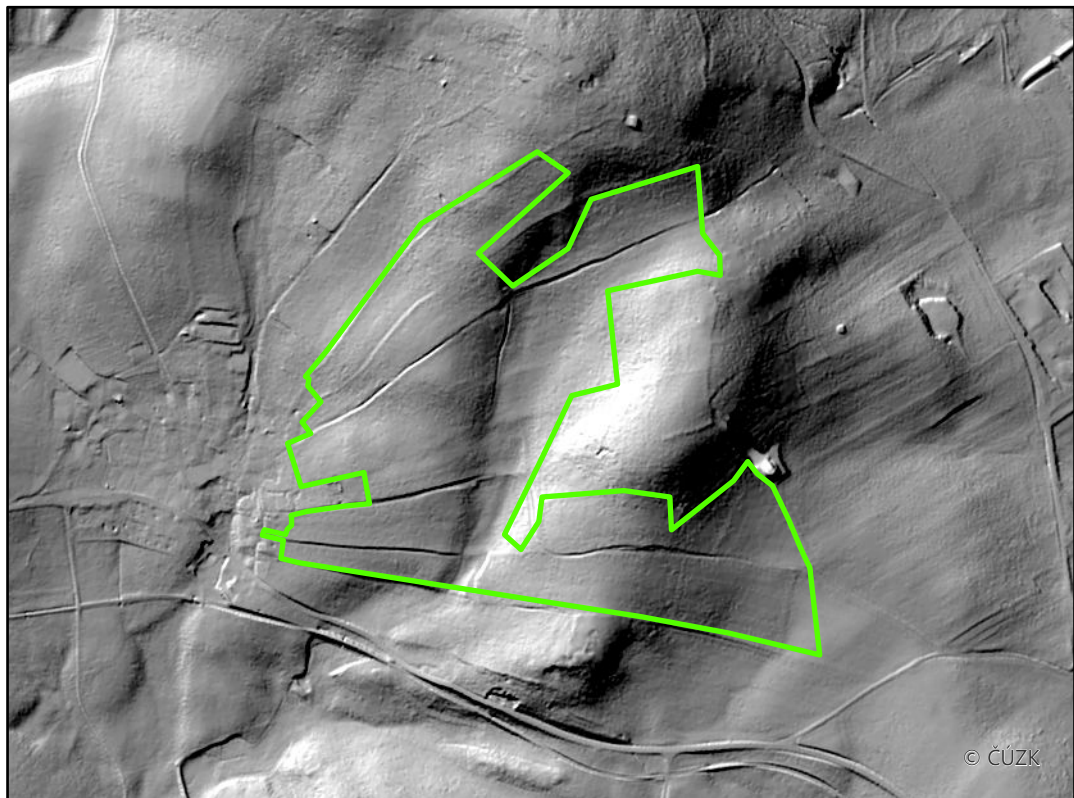


Katastrální území: Radňovice / Kraj Vysočina
Rozloha plužiny: 54 ha




 Obvod plužiny

 Zastavěné území

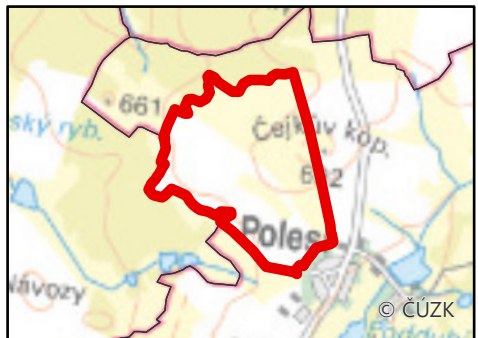
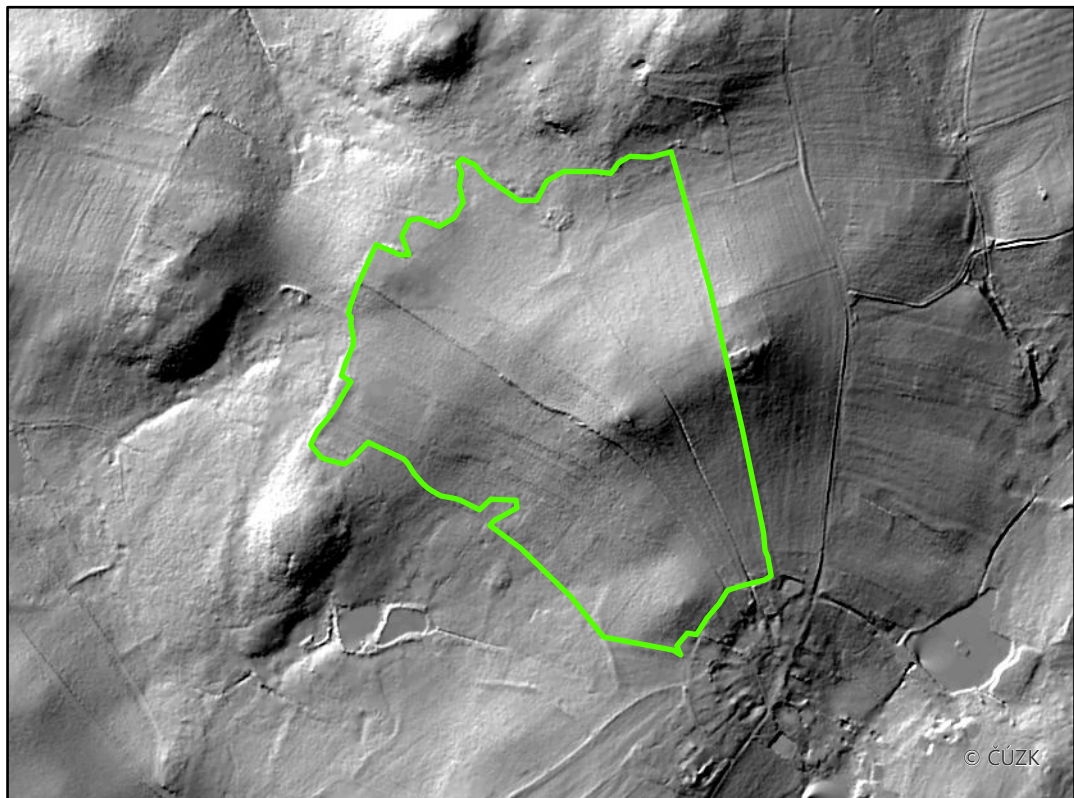


Katastrální území: Polesí u Počátek / Kraj Vysočina
Rozloha plužiny: 60,2 ha



 Obvod plužiny

 Zastavěné území



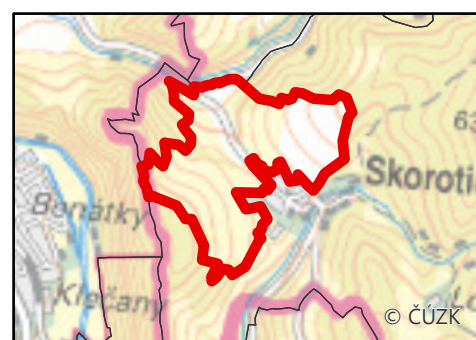
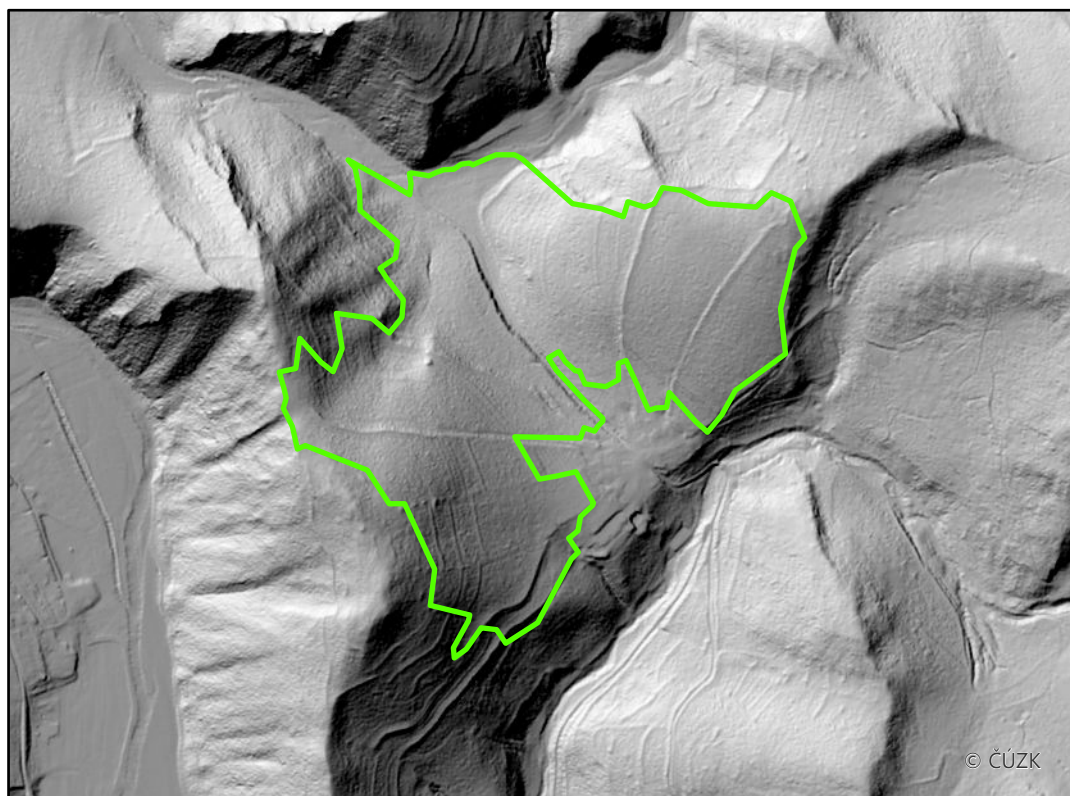
Katastrální území: Skorotice / Kraj Vysočina

Rozloha plužiny: 55,5 ha

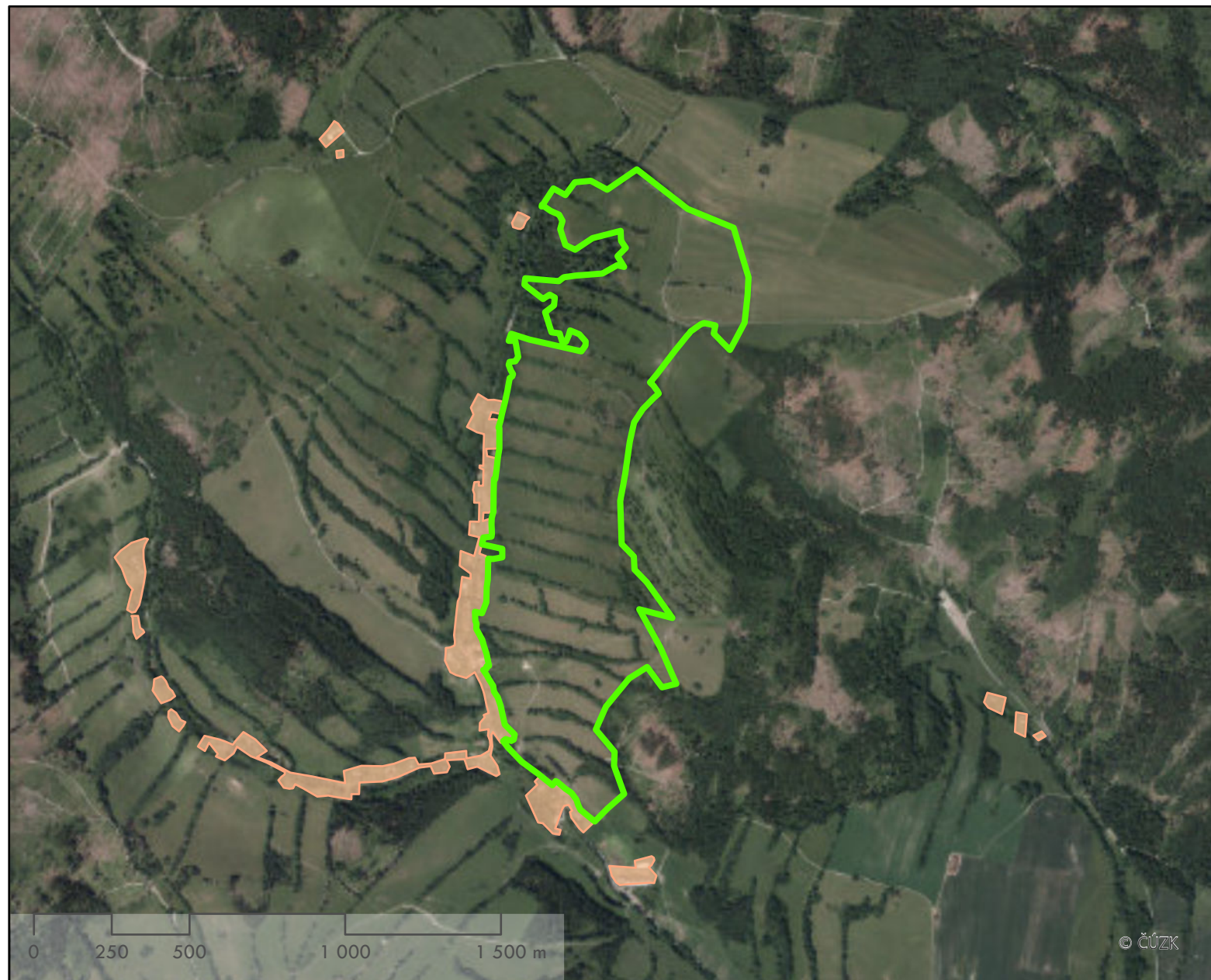





 Obvod plužiny

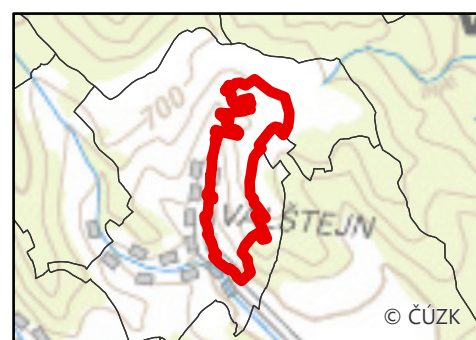
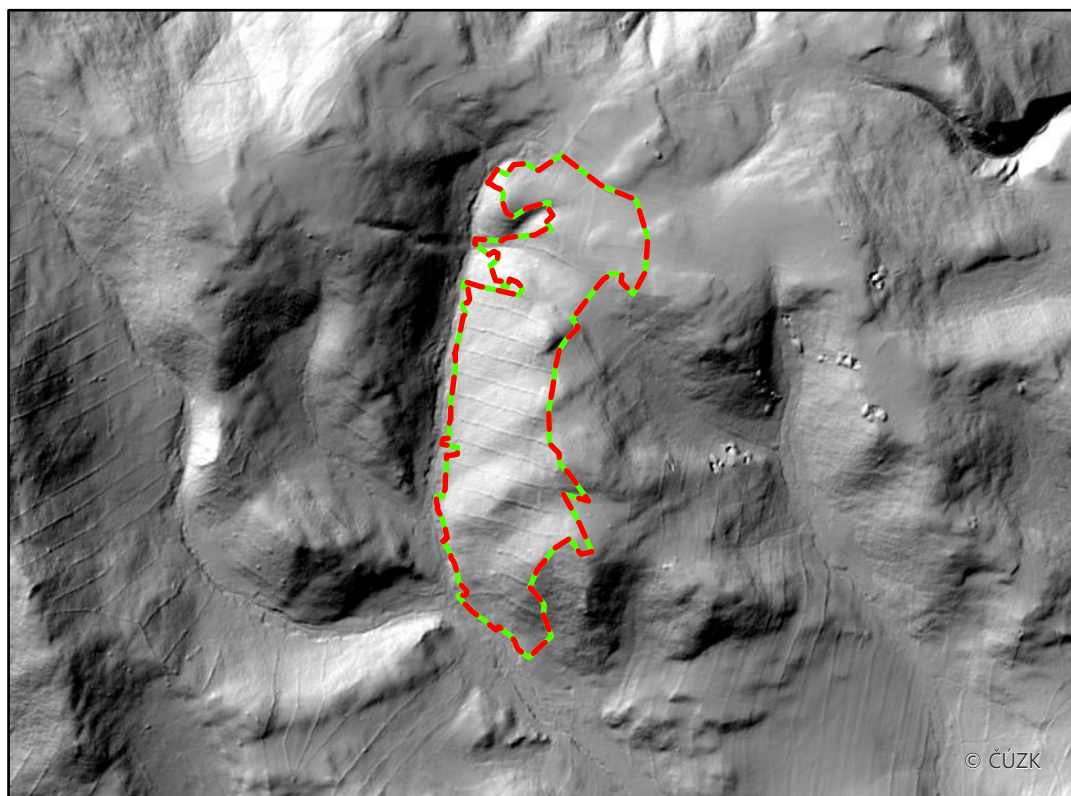
 Zastavěné území



Katastrální území: Valštejn / Moravskoslezský kraj
Rozloha plužiny: 89,6 ha



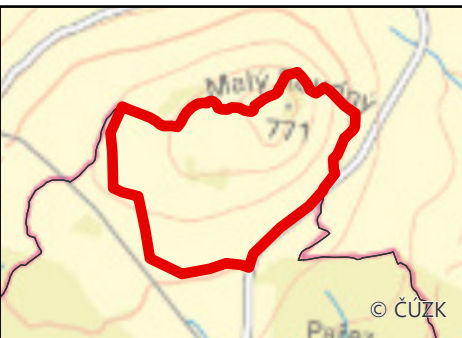
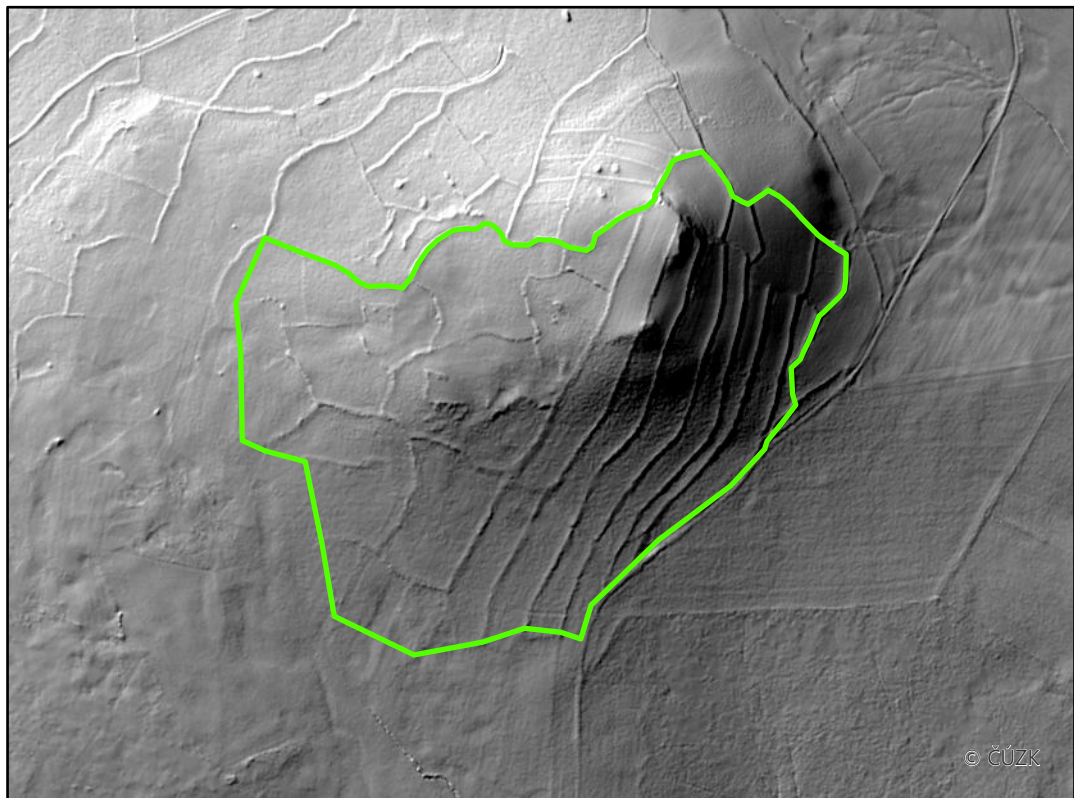
-  Obvod plužiny
-  Obvod plužiny (dle modelu terénu)
-  Zastavěné území



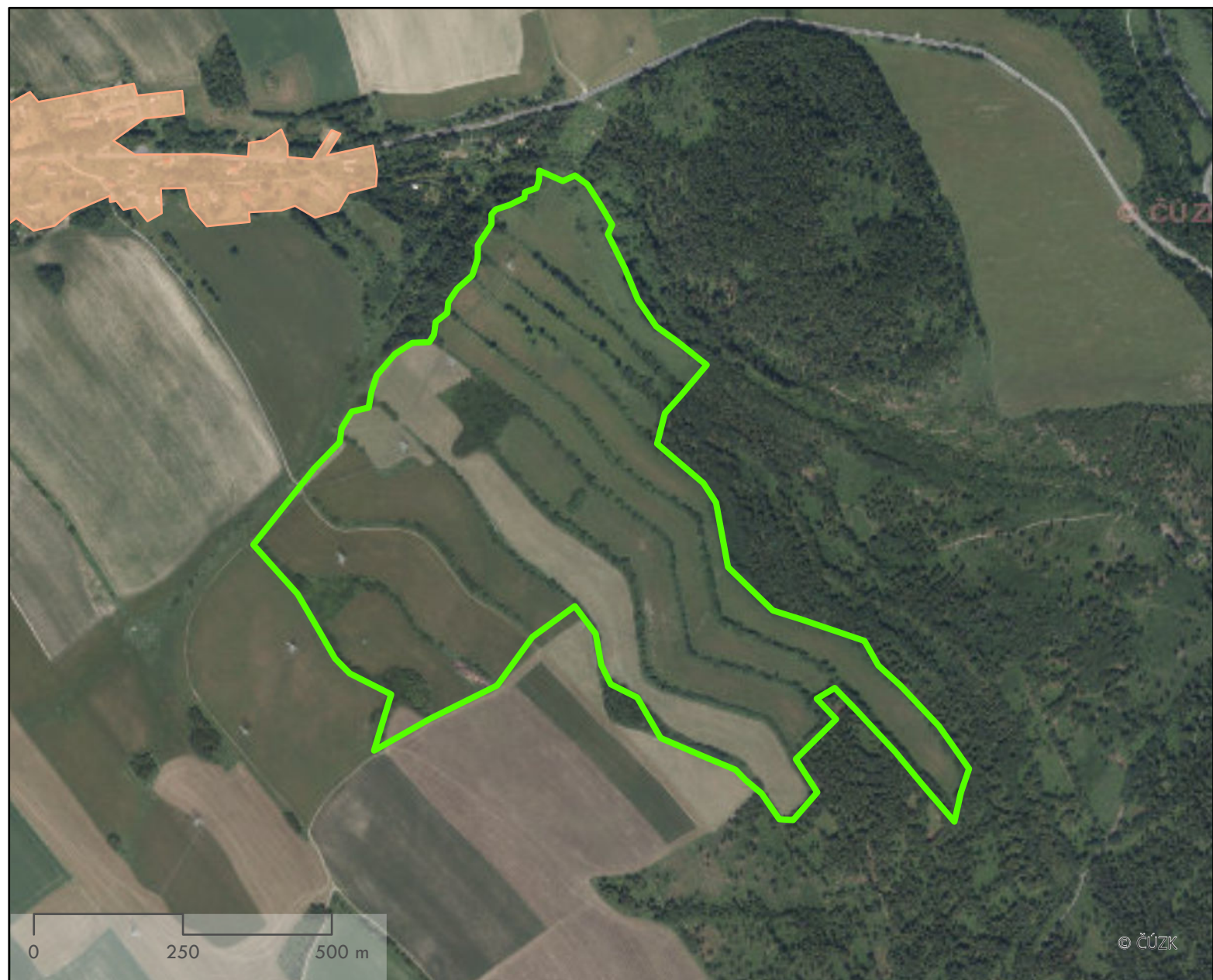
Katastrální území: Křišťanovice / Moravskoslezský kraj
Rozloha plužiny: 73,4 ha






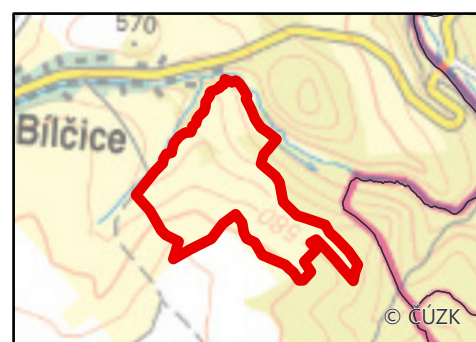
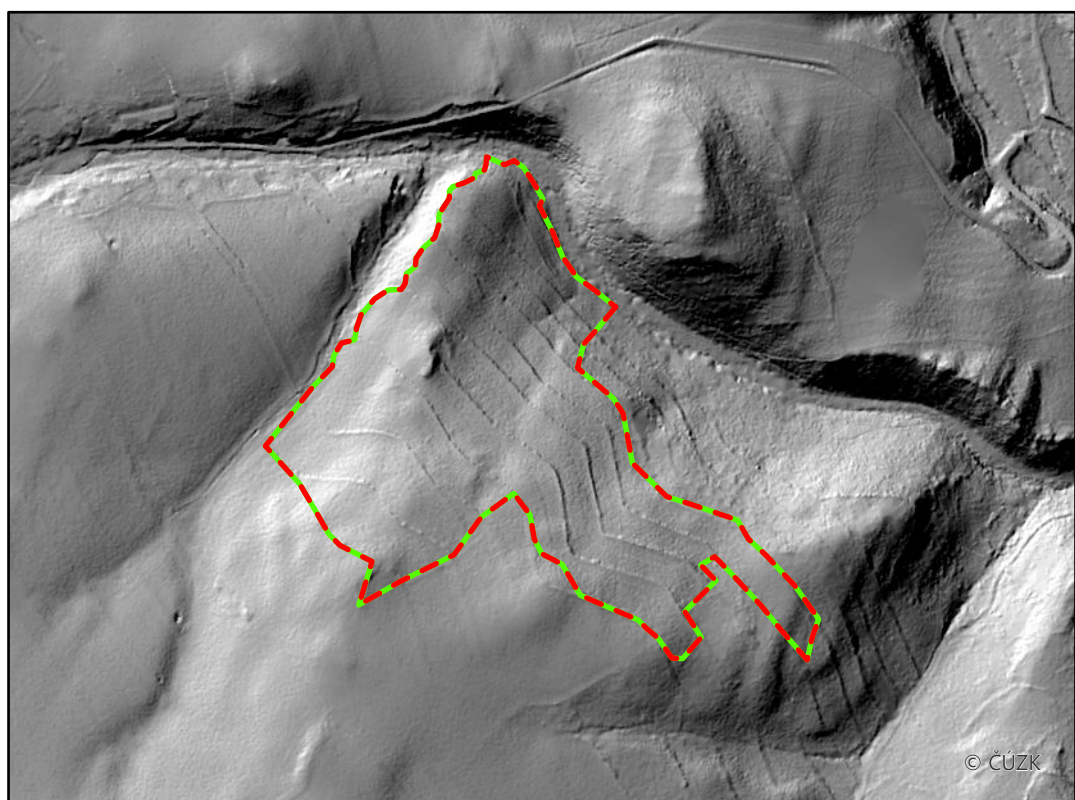
 Obvod plužiny



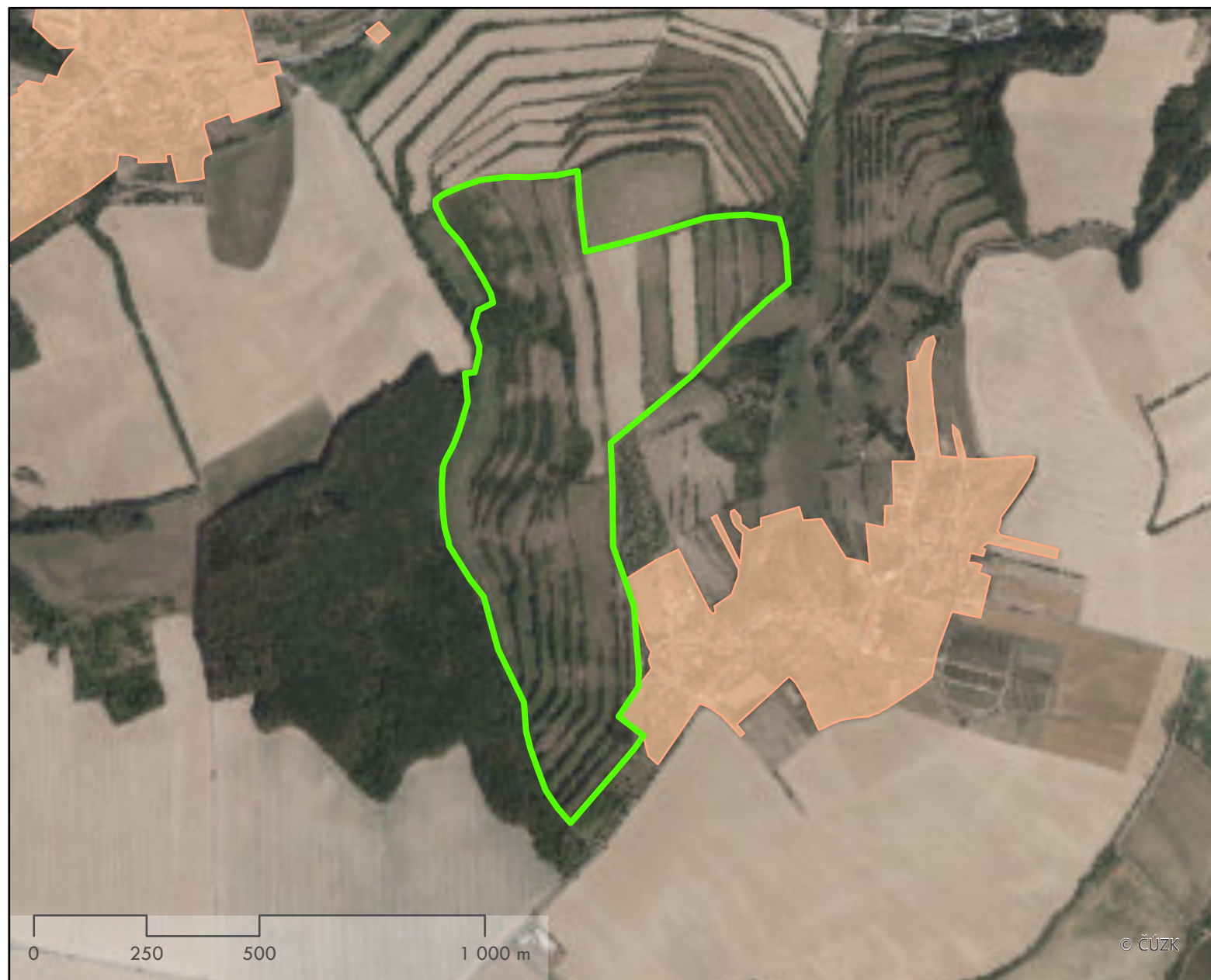
Katastrální území: Bílčice / Moravskoslezský kraj
Rozloha plužiny: 52,6 ha



-  Obvod plužiny
-  Obvod plužiny (dle modelu terénu)
-  Zastavěné území



Katastrální území: Tučapy / Zlínský kraj
Rozloha plužiny: 53,7 ha



 Obvod plužiny

 Zastavěné území



Katastrální území: Raná u Loun / Ústecký kraj
Rozloha plužiny: 123,5 ha



 Obvod plužiny

 Zastavěné území

