

# INSTALACE ARCGIS


Verze 10.5

**ArcGIS for Desktop Student Trial software**

**Studenti a zaměstnanci ČZU v Praze**

# A. AKTIVACE AUTORIZAČNÍHO KÓDU

- Proces instalace a autorizace začíná na stránce [www.esri.com/educationedition](http://www.esri.com/educationedition)
- Zde se přihlašte vlastním Esri účtem
- Pokud Esri účet nemáte, založte si jej

 **esri** Understanding our world.

## ArcGIS for Desktop Student Trial

Welcome! To activate your ArcGIS for Desktop Student Trial software, please log in with your Esri Account.

Your ArcGIS for Desktop Student Trial includes

What is included?

- ArcGIS 10 for Desktop Student Trial
- The following ArcGIS for Desktop extensions:
  - ArcGIS 3D Analyst
  - ArcGIS Geostatistical Analyst
  - ArcGIS Network Analyst
  - ArcGIS Publisher
  - ArcGIS Schematics

Register for a Free Trial

You must create a FREE Esri Account to access this trial.

[I have an Esri Account](#)

[I need to create a new Esri Account](#)

# VYTVOŘENÍ A AKTIVACE ESRI ÚČTU

- Je potřeba zadat jméno, příjmení, e-mail.
- Esri účet je možno propojit s Google účtem nebo s Facebook účtem
- Na e-mail přijde zpráva ohledně aktivace Esri účtu.
- Během aktivace je nutné doplnit další údaje o uživateli a zadat heslo k Esri účtu (minimálně 8 znaků, alespoň 1 číslo, alespoň 1 písmeno).
- Všechna políčka formuláře je nutné vyplnit

esri ArcGIS Industries About Support

Welcome to Esri

Create an Account

First Name  
Enter First Name

Last Name  
Enter Last Name

E-mail Address  
Enter E-mail

We will send you details on how to finalize your account.

Create an Account

OR

Sign up with

Already have an account? [Sign in here.](#)

esri Understanding our world.

Esri Account

**Activate Your Account**

Thank you for signing up for an Esri Account. You are just one step from getting started. Please click the button below to activate your account. Review the [Terms of Use](#).

**Activate Your Account**

Note: This activation email will expire in 30 days. Visit <https://accounts.esri.com/signup> to submit a new request

If you have any questions, please contact us at:

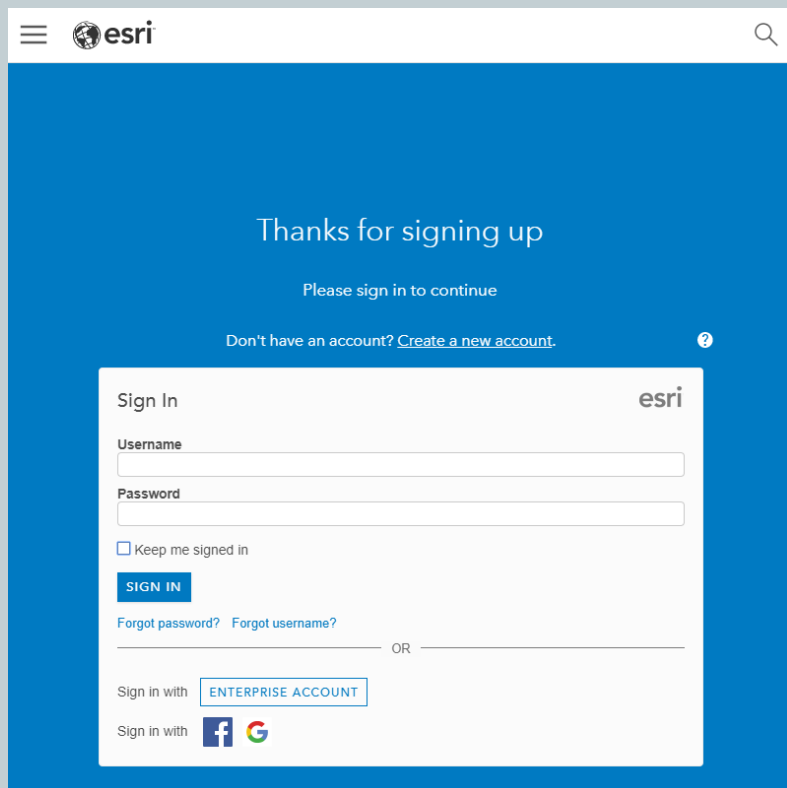
E-mail: [service@esri.com](mailto:service@esri.com)  
Toll-free phone: 888-377-4575 (option 5)  
Fax: 909-793-4801  
Hours: 5:00 a.m. - 5:00 p.m. (Pacific Time), Monday - Friday

Outside of the US, contact [your local Esri office](#).

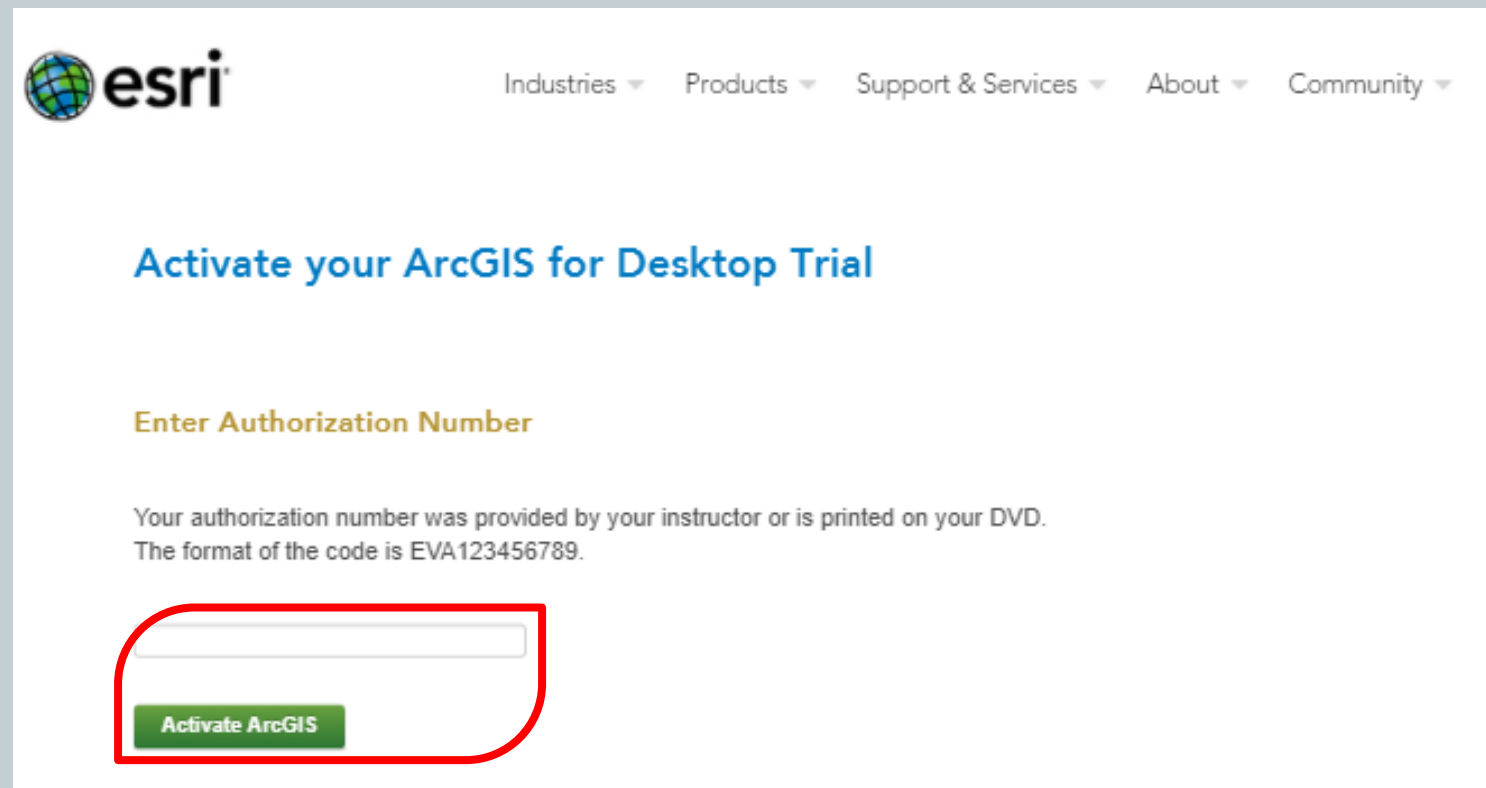
Regards,  
Esri Customer Service

# A. AKTIVACE AUTORIZAČNÍHO KÓDU

- Přihlašte se vytvořeným Esri účtem
- Zadejte autorizační číslo (EVAxxxxxxxx) a aktivujte jej
- Autorizační kód je možné získat na cvičení nebo u Michala Hnátky (D336)



The screenshot shows the Esri sign-in page. At the top, there is a navigation bar with the Esri logo and a search icon. Below the navigation bar, the text "Thanks for signing up" is displayed, followed by "Please sign in to continue" and a link to "Create a new account". A "Sign In" form is centered on the page, featuring fields for "Username" and "Password", a "Keep me signed in" checkbox, and a "SIGN IN" button. Below the form, there are links for "Forgot password?" and "Forgot username?", and an "OR" separator. At the bottom of the form, there are options to "Sign in with ENTERPRISE ACCOUNT" and "Sign in with" social media icons for Facebook and Google.



The screenshot shows the Esri ArcGIS activation page. At the top, there is a navigation bar with the Esri logo and links for "Industries", "Products", "Support & Services", "About", and "Community". Below the navigation bar, the text "Activate your ArcGIS for Desktop Trial" is displayed in blue. Underneath, the text "Enter Authorization Number" is shown in yellow. A paragraph of text states: "Your authorization number was provided by your instructor or is printed on your DVD. The format of the code is EVA123456789." Below this text, there is a text input field for the authorization number, which is highlighted with a red rounded rectangle. At the bottom of the input field, there is a green "Activate ArcGIS" button.

## B. STAŽENÍ ARCGIS

- Z nabídky si vyberte nejnovější verzi ArcGIS – s nejvyšším číslem (případně starší, pokud k tomu máte důvody)
- V další nabídce vyberte ArcGIS for Desktop (ArcMap) a stáhněte pomocí Download
- Ve šk.roce 2017/2018 je na učebnách FŽP verze 10.5.1
- !pokud jste instalační soubory získali jinou cestou, není nutné je znovu stahovat
- !pokud pouze prodlužujete licenci, není nutné sw stahovat a nově instalovat

esri Industries Products Support & Services About Community

### Select a Version

Select the version of ArcGIS Desktop you would like to download if you have not already received a DVD. If you have a DVD from your instructor, please follow the instructions in the Install Guide.

ArcGIS Pro 2.0  
ArcGIS 10.5.1

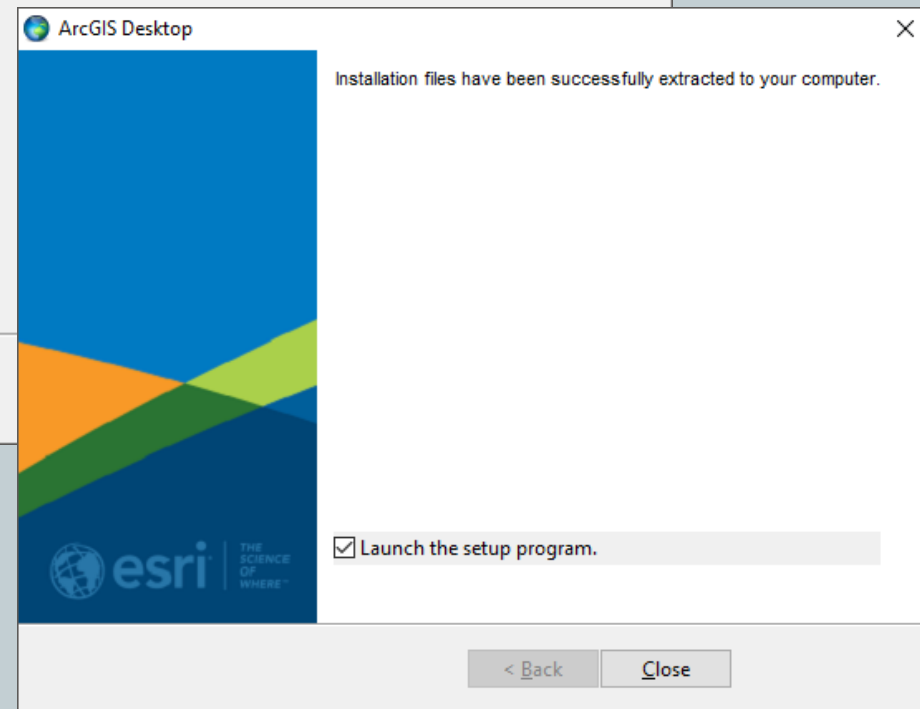
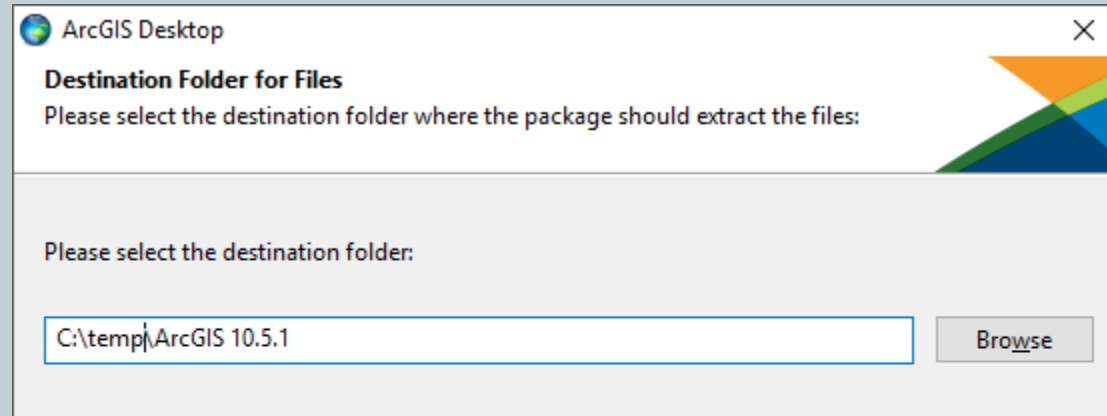
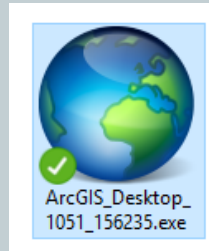
ArcGIS Pro 1.3  
ArcGIS 10.4.1

ArcGIS Pro 1.1  
ArcGIS 10.3.1

File Description	Documentation	Download Size	English
ArcGIS Pro	<a href="#">Quick Start Guide</a>	936.46 MB	<a href="#">Download</a> English
ArcGIS Pro Offline Help		149.88 MB	<a href="#">Download</a> English
ArcGIS Pro SDK for .NET		57.13 MB	<a href="#">Download</a> English
ArcGIS Data Interoperability for Pro		608.84 MB	<a href="#">Download</a> English
ArcGIS Pro Database Support		55.98 MB	<a href="#">Download</a> English
ArcGIS Pro Coordinate Systems Data		1.11 GB	<a href="#">Download</a> English
ArcGIS for Desktop (ArcMap)	<a href="#">Install Guide</a>	987.66 MB	<a href="#">Download</a> English
ArcGIS Data Interoperability for Desktop (ArcMap)		717.29 MB	<a href="#">Download</a> English

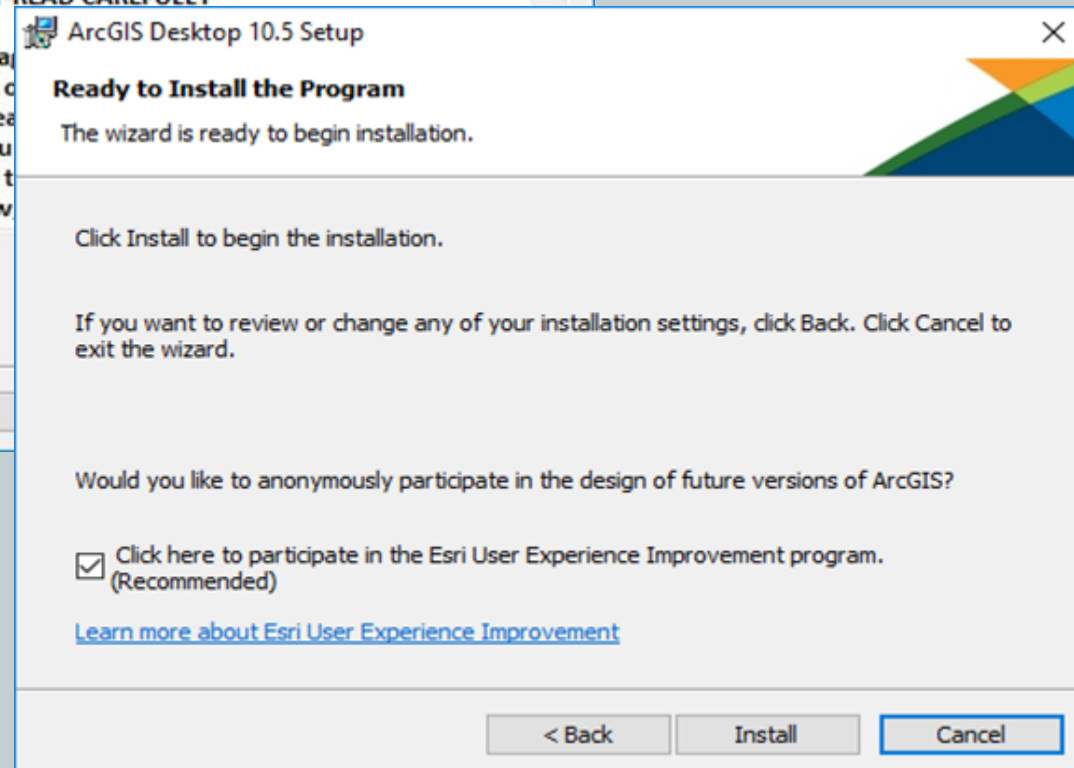
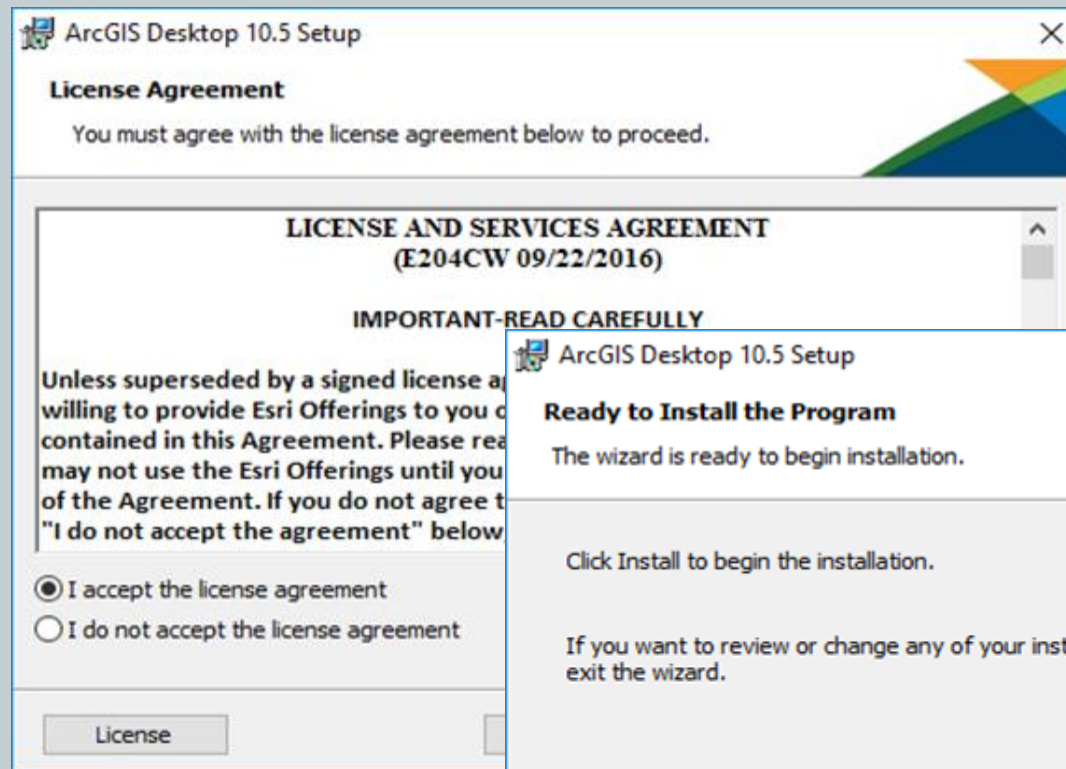
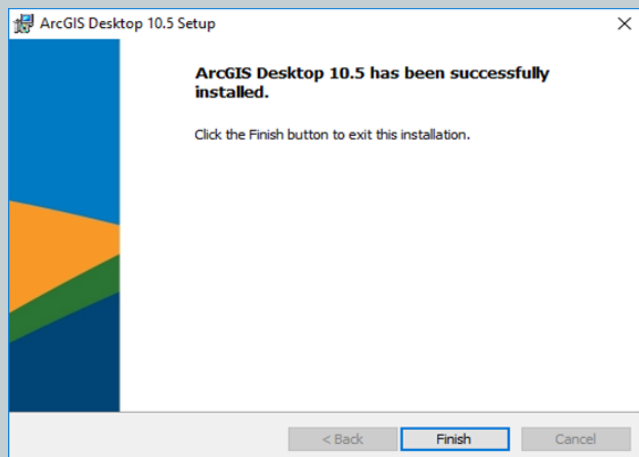
## C. SPUŠTĚNÍ INSTALACE ARCGIS

- Najděte stažený EXE soubor (ArcGIS\_Desktop\_10XXXXXXX.exe podle verze instalace) a dvojklikem ho spusťte
- Zvolte místo, kam se instalační soubory rozbálí
- Po rozbalení pokračujte k instalaci (Launch the setup program musí být zatrženo a kliknout na Close)



## C. INSTALACE ARCGIS

- Potvrďte, že souhlasíte s licenčním ujednáním (licence je určena pouze pro výukové účely)
- Vyberte typ instalace (Complete)
- Potvrďte nastavení ohledně umístění programu a doplňků
- Instalaci spustíte kliknutím na Install
- Počkete na proběhnutí instalace (trvá dlouho)



# D. AUTORIZACE ARCGIS

- Po skončení instalace se otevře Authorization Wizard (průvodce autorizací)
- V dotazu na produkt zvolte **ArcGIS Desktop Advanced Single Use**
- Pokračujte kliknutím na **Authorize Now**

ArcGIS Administrator Wizard

**1. Select a product**

ArcGIS Desktop

- Advanced (ArcInfo) Concurrent Use
- Advanced (ArcInfo) Single Use
- Standard (ArcEditor) Concurrent Use
- Standard (ArcEditor) Single Use
- Basic (ArcView) Concurrent Use
- Basic (ArcView) Single Use

ArcGIS Engine

- ArcGIS Engine (Concurrent Use)
- ArcGIS Engine (Single Use)
- ArcGIS Engine and ArcGIS Engine Developer Kit (Single Use)

Esri CityEngine

- Advanced Concurrent Use
- Advanced Single Use
- Basic Single Use

**2. Define a License Manager for Concurrent Use products**

License Manager

- Define a License Manager now:  
Not\_Set
- Define a License Manager later from the ArcGIS Administrator

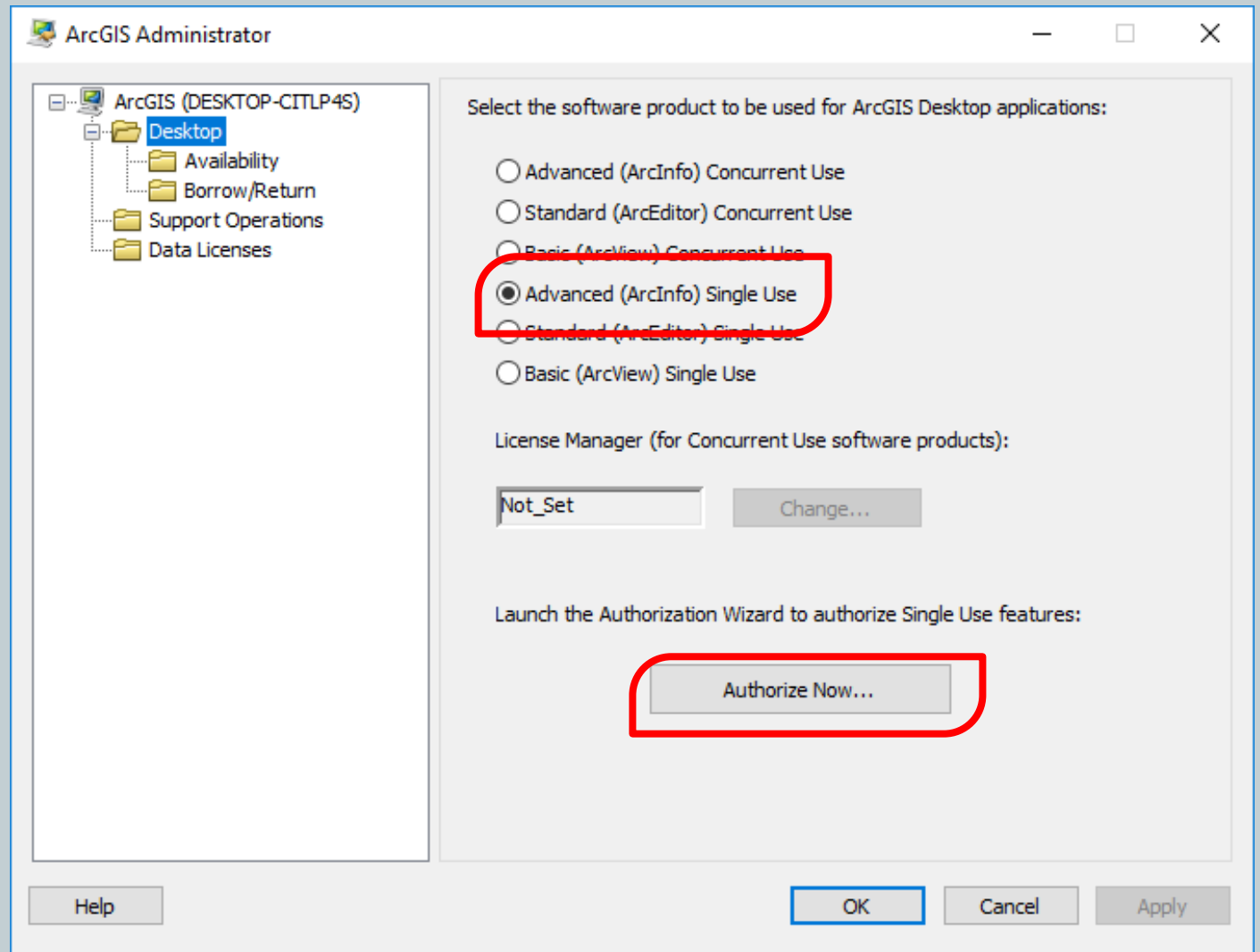
**2. Launch the Authorization Wizard for Single Use products**

Authorization Wizard



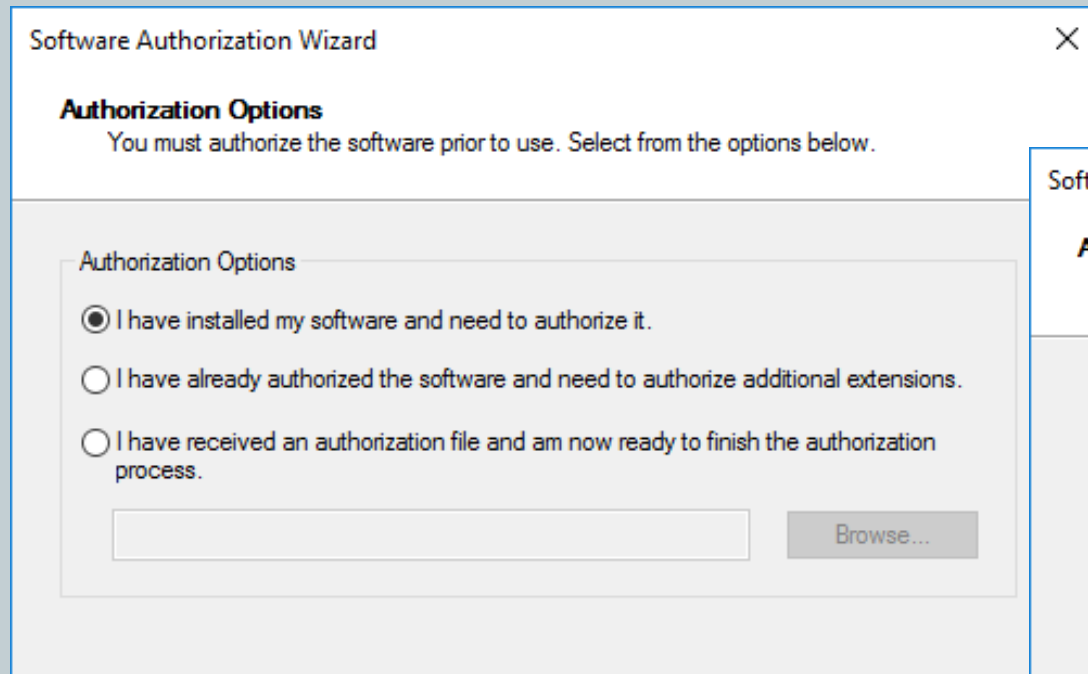
## D. AUTORIZACE ARCGIS

- Pokud by se okno průvodce nespustilo (nebo v případě prodloužení stávající licence) najdete v programech ArcGIS Administrator a nastavte Advanced Single Use
- Pokračujte kliknutím na **Authorize Now**



## D. AUTORIZACE ARCGIS

- Vyberte  
*I have installed my software and need to authorize it*
- A později  
*Authorize with ESRI now using the Internet*

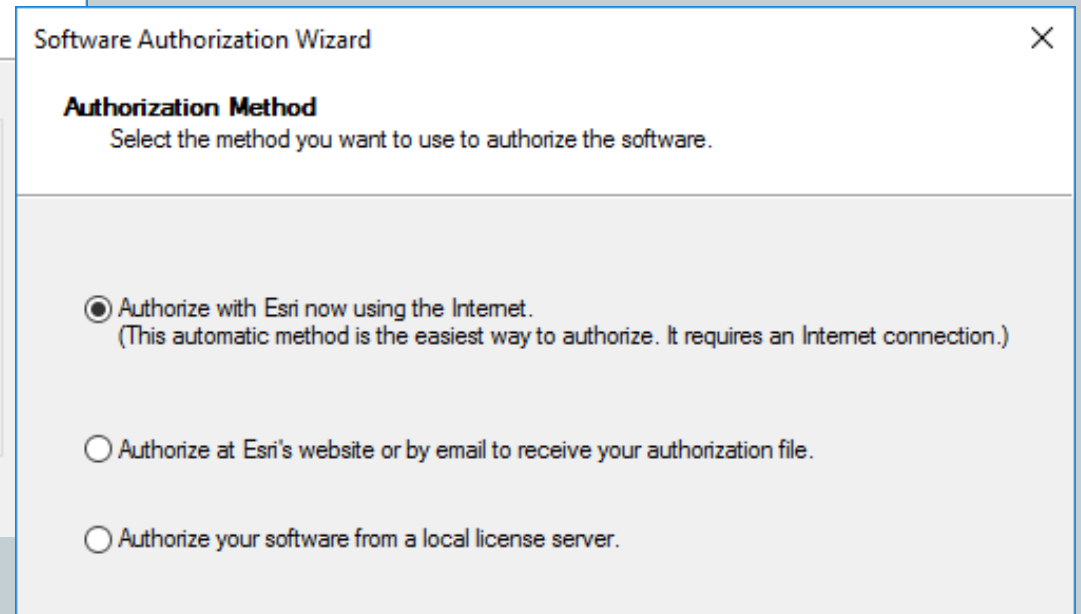


Software Authorization Wizard

**Authorization Options**  
You must authorize the software prior to use. Select from the options below.

Authorization Options

- I have installed my software and need to authorize it.
- I have already authorized the software and need to authorize additional extensions.
- I have received an authorization file and am now ready to finish the authorization process.



Software Authorization Wizard

**Authorization Method**  
Select the method you want to use to authorize the software.

- Authorize with Esri now using the Internet.  
(This automatic method is the easiest way to authorize. It requires an Internet connection.)
- Authorize at Esri's website or by email to receive your authorization file.
- Authorize your software from a local license server.

# D. AUTORIZACE ARCGIS

- Vyplňte požadované informace o uživateli a společnosti

Software Authorization Wizard

**Authorization Information**  
We will use the following information to verify our records and authorize your use of the software. (\* required field)

\*First Name:

\*Last Name:

\*Organization:

Department:

\*Address 1:

Address 2:

\*City:

\*State/Province:

\*Zip/Postal Code:

\*Location:

\*Phone Number:

\*Email:

Comment:

Optional user-defined authorization description.

< Back Next > Cancel

Software Authorization Wizard

**Authorization information (continued)**  
We will use the following information to verify our records and authorize your use of the software. (\* required field)

\*Your Organization:

\*Your Industry:

\*Yourself:

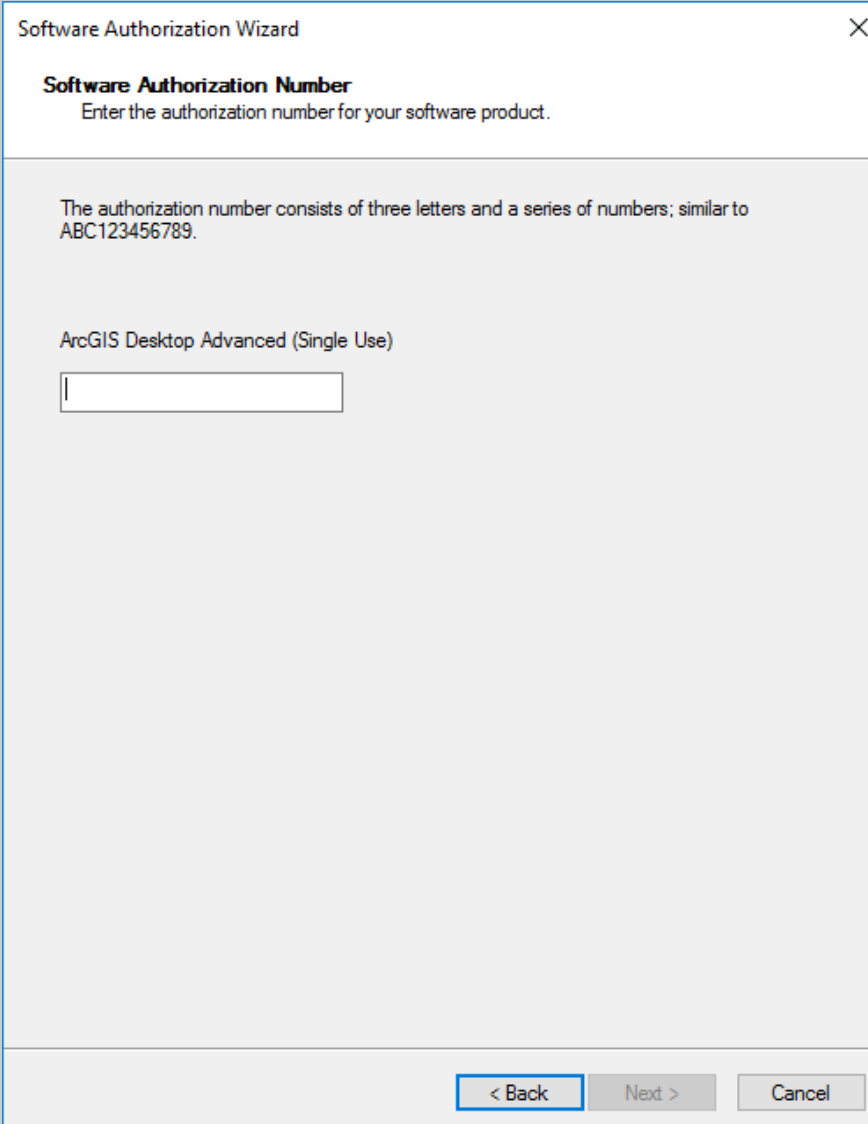
The personal information you supplied is protected under Esri's privacy policy. If you want to view Esri's privacy policy, click the View button below.

View...

< Back Next > Cancel

## D. AUTORIZACE ARCGIS

- Doplňte aktivovaný autorizační kód (EVAxxxxxxxxx)



Software Authorization Wizard

**Software Authorization Number**  
Enter the authorization number for your software product.

The authorization number consists of three letters and a series of numbers; similar to ABC123456789.

ArcGIS Desktop Advanced (Single Use)

< Back   Next >   Cancel

## D. AUTORIZACE ARCGIS

- Není nutné zadávat autorizační kódy k extenzím, extenze budou autorizovány automaticky.
- Pokračujte pomocí **Další** až k odeslání autorizace

Software Authorization Wizard

**Authorize Software Extensions**  
Please select an option below.

Options

do not want to authorize any extensions at this time.

I have authorization number(s) to authorize one or more extensions.

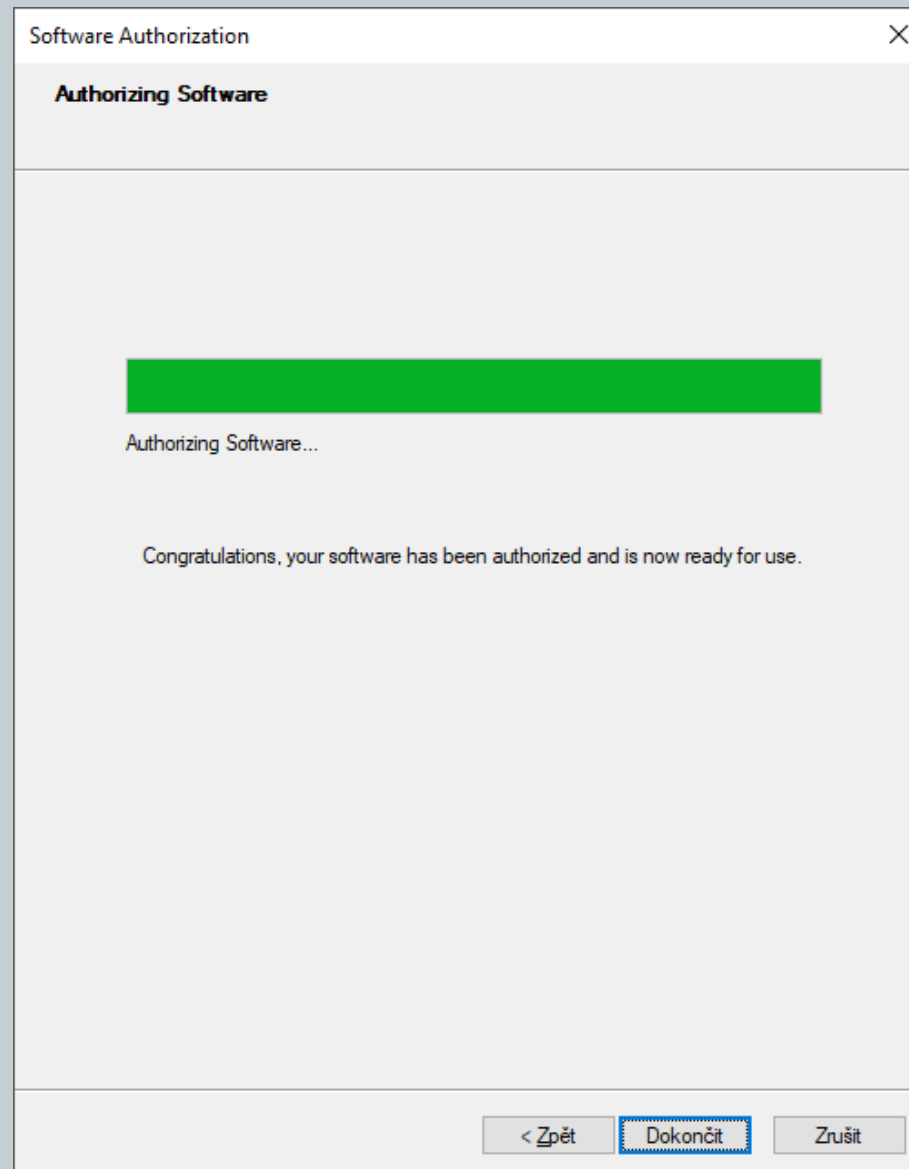
Extensions

Feature	Authorization Number
3D Analyst	
Spatial Analyst	
Network Analyst	
Publisher	
Data Interoperability	
Geostatistical Analyst	
Tracking Analyst	
Schematics	
Full Motion Video	
Workflow Manager	
Data Reviewer	

< Zpět   **Další >**   Zrušit

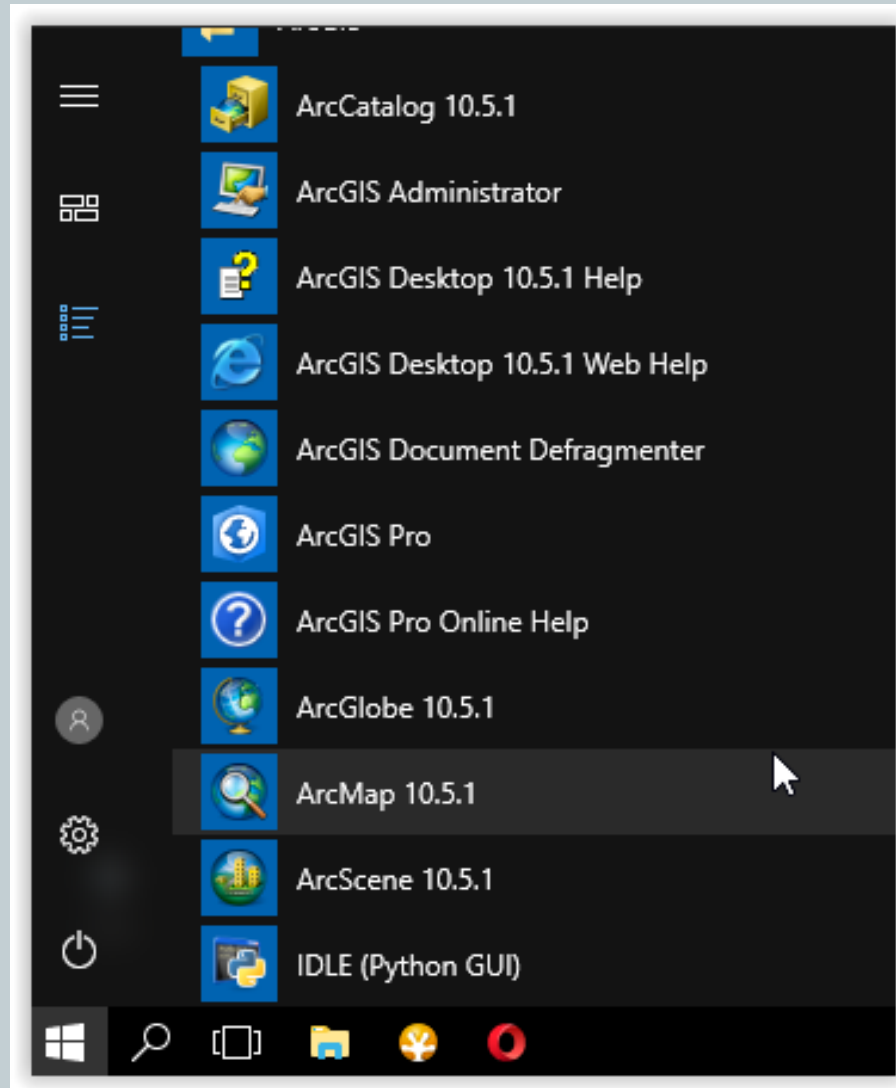
## D. AUTORIZACE ARCGIS

- Správně dokončená autorizace se ukončí kliknutím na Dokončit (nebo Finish).



## E. SPUŠTĚNÍ ARCGIS

- Všechny instalované komponenty ArcGIS najdete ve svých programech



# ZÁVĚREM

- Platnost licence je 1 rok.
- Licenční číslo je možné autorizovat 1x. Není tedy možné s jedním číslem provést instalaci na notebook a zároveň stolní počítač, nebo po reinstalaci počítače instalovat znova.
- Extenze *Full Motion Video* je licencována jen na 3 měsíce! Licenci zřejmě k ničemu nevyužijete, tedy není potřeba. I po skončení její platnosti ArcGIS bude fungovat.

