

Invitation to **DOUBLE SEMINAR**

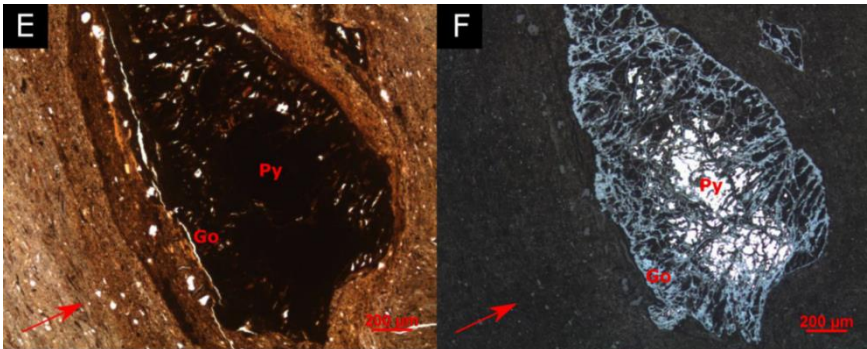


Prof. Dr. Valérie Cappuyns
Professor
Katholieke Universiteit Leuven,
Brussels, Belgium



Dr. Daniel CW Tsang
Associate Professor
The Hong Kong Polytechnic
University, Hong Kong, China

Influence of bedrock composition on Arsenic and Molybdenum in soils



Wednesday 6th February 2019 at 2 pm

Faculty of Environmental Sciences, CULS Prague
D222 (MCEV II, 2nd floor)